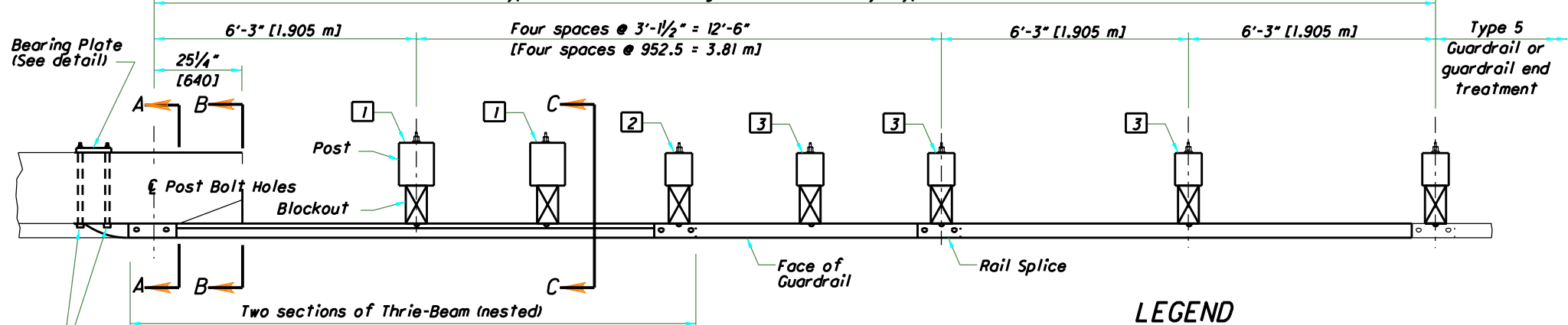


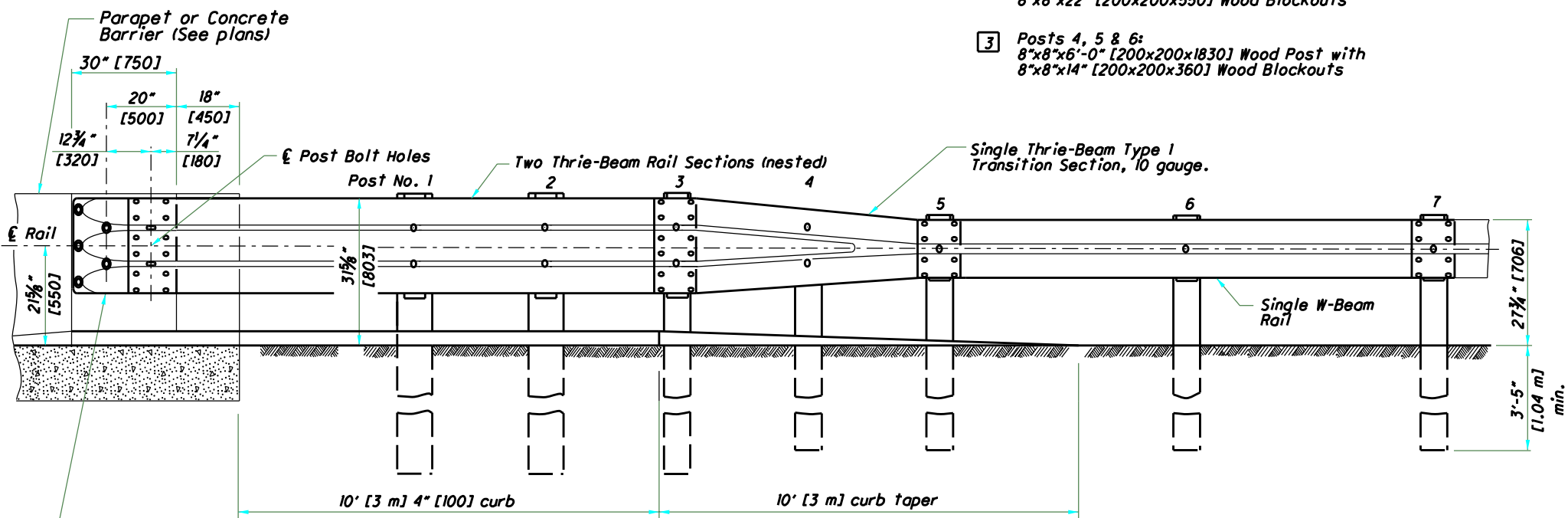
Item 606 Guardrail Type 5 and Item 606 Bridge Terminal Assembly, Type 1 (See PAYMENT Note)



1/4" [22] dia. ASTM A 325 through bolts (length to be determined in field in accordance with Parapet width) into Bearing Plate with standard washers and hex nuts.

LEGEND

- 1 Posts 1 & 2:
10"x10"x8'-0" [250x250x2440] Wood Post with
8"x8"x22" [200x200x550] Wood Blockouts
- 2 Post 3:
8"x8"x8'-0" [200x200x2440] Wood Post with
8"x8"x22" [200x200x550] Wood Blockouts
- 3 Posts 4, 5 & 6:
8"x8"x6'-0" [200x200x1830] Wood Post with
8"x8"x14" [200x200x360] Wood Blockouts



ELEVATION

NOTES

GENERAL: For additional details, see SCD GR-1.1.

APPLICATION: Use Type 1 Bridge Terminal Assembly to connect guardrail runs to bridges having deflector Parapet Type Bridge Railing (see Structural Engineering's SCD BR-11). It may also be used to connect guardrail runs to the approach ends of Concrete Barrier (see SCD RM-4.6).

On undivided, bi-directional roadways, Type 1's may be used to anchor guardrail runs to the trailing end of Deflector Parapets or Concrete Barrier installations.

THRIE BEAM TRANSITION: Symmetrical W-Beam to Thrie Beam transition panel shall be 10 gauge.

POSTS: Posts may be set in drilled holes or driven to grade. See SCD GR-1.1 for additional Post embedment details.

WOOD POSTS - Use square sawed pressure treated wood as per CMS 710.14 and fabricate with square ends. Bore bolt holes and trim the tops of posts, if required, after the posts are set.

STEEL POSTS - are allowed as an alternate. Use W8x24 [W200x35.9] for 10"x10" [250x250] wood posts and use W6x25 [W150x37.1] for 8"x8" [200x200] posts. Use same post material throughout assembly.

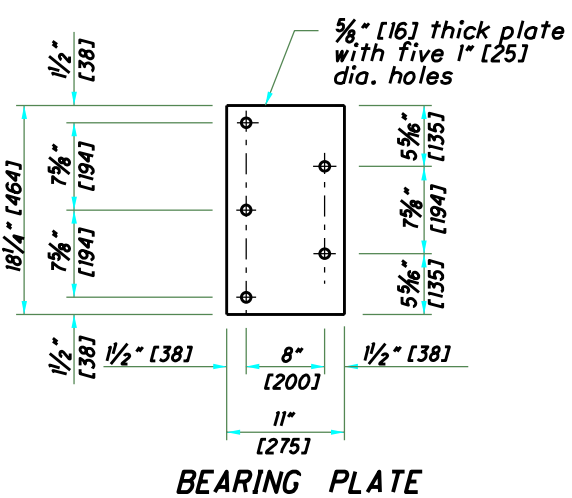
BLOCKOUTS: Use wood blockouts only, steel or plastic blockouts are not permitted. Use notched blockouts with steel posts.

CURB: Provide a Type 4A or 4C concrete curb minimum of 20' [6 m], or longer as shown on plans, including a 10' [3 m] taper (from curb height to flush). Front of curb to be flush with face of guardrail.

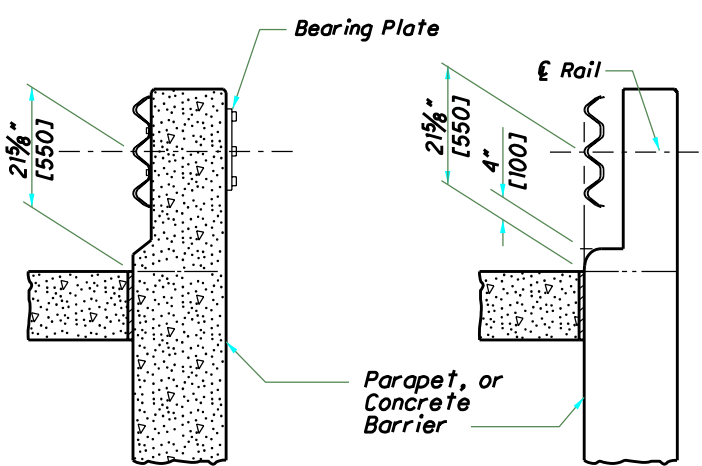
FLARED GUARDRAIL: Begin Standard Guardrail Flares as shown on SCD GR-5.1 preferably at or beyond Post No. 7; however, the flare may begin at Post No. 5.

PAYMENT: Item 606 - Bridge Terminal Assembly, Type 1, Each, includes the cost of extra components, in excess of normal guardrail, for additional and different size of posts and blockouts, nested Thrie-Beam, transition and connector sections, Bearing Plate, bolts, washers, nuts, and other hardware.

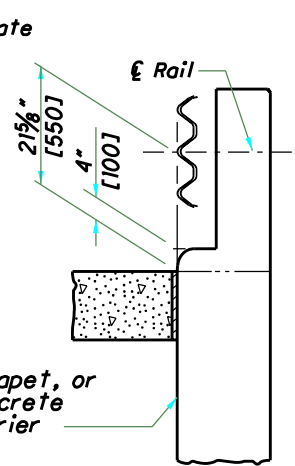
The curb is required in this design, and is paid separately under Item 609 - Curb, Type 4A (or 4C), per Foot, for the curb and taper sections, including materials, forming and labor needed to construct as shown.



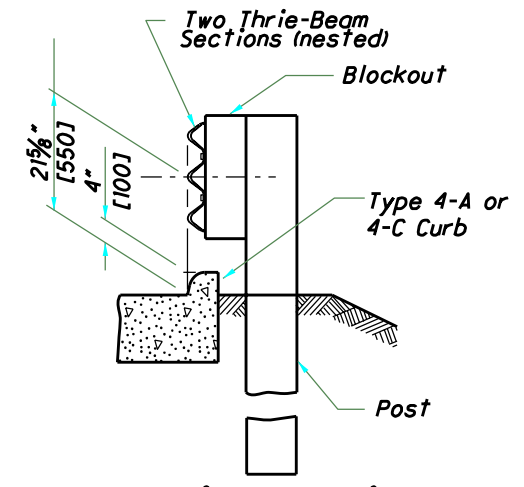
BEARING PLATE



SECTION A-A



SECTION B-B



SECTION C-C

Front of curb to be flush with face of guardrail.

THIS DRAWING REPLACES GR-3.1 DATED 1-19-07.