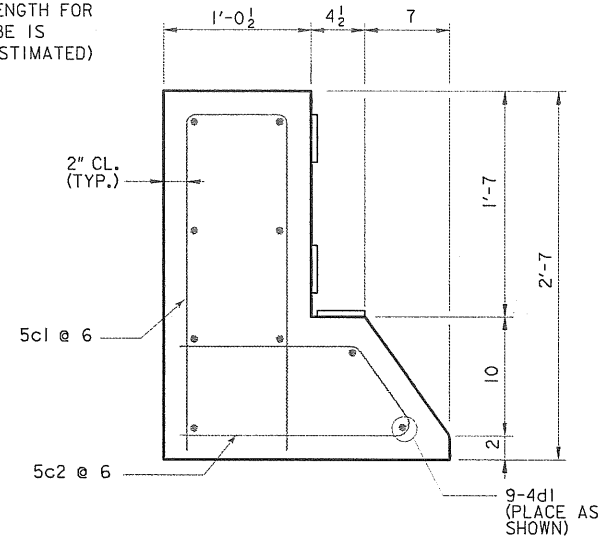
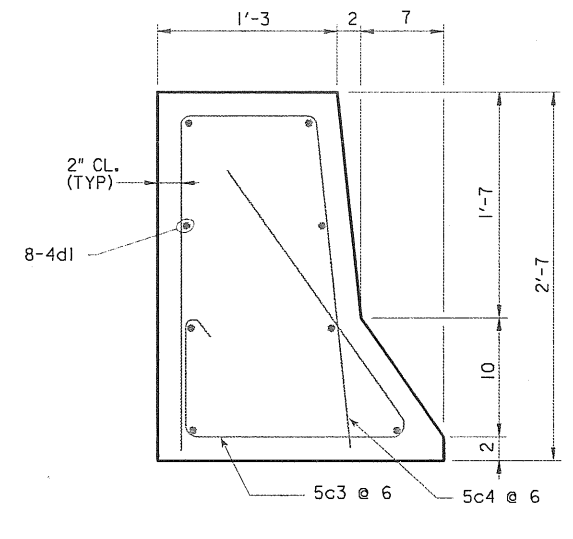


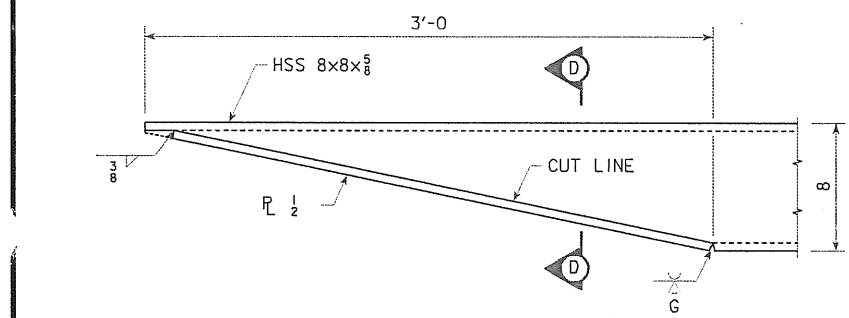
SECTION A-A
(REINFORCING STEEL NOT SHOWN FOR CLARITY)



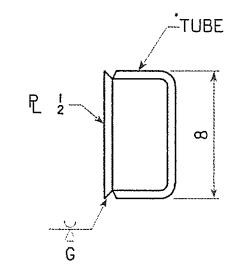
SECTION B-B



SECTION C-C
(FIELD BEND 5c3 & 5c4 BARS AT TRANSITION SECTION)



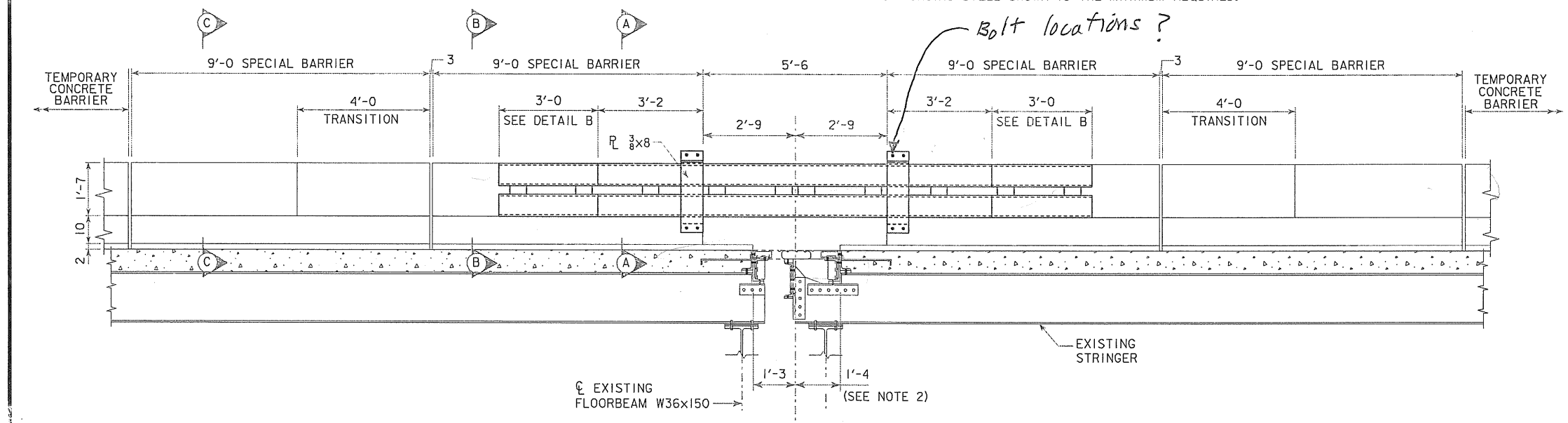
DETAIL B
(END SECTION OF STRUCTURAL TUBING)



SECTION D-D

NOTES:

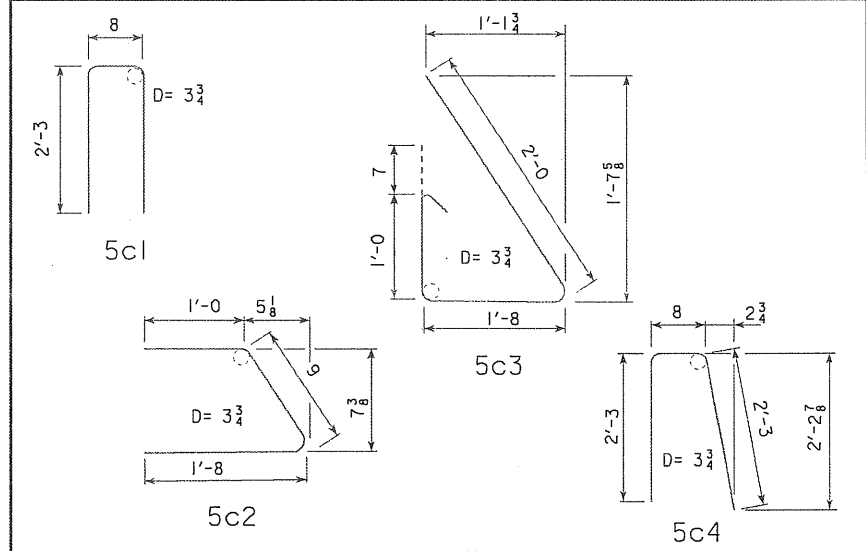
1. DETAILS SHOWN ARE FOR THE SUGGESTED TEMPORARY TRANSITION BARRIER.
2. DIMENSION OF ROADWAY EXPANSION JOINT FINGERS ARE SHOWN IN THEIR POSITION FOR NORMAL TEMPERATURE (68°F), FULL DEAD LOAD, NO LIVE LOAD AND NO WIND.
3. QUANTITIES SHOWN ARE FOR TRANSITION BARRIER REQUIRED AT ONE (1) FINGER JOINT.
4. PRICE BID FOR "TEMPORARY BARRIER RAIL, CONCRETE" SHALL INCLUDE ALL COSTS ASSOCIATED WITH FURNISHING EPOXY COATED REINFORCING, CONCRETE, STRUCTURAL STEEL AND ALL OTHER MATERIALS, EQUIPMENT AND LABOR REQUIRED TO ERECT AND REMOVE THE SPECIAL BARRIER TRANSITION.
5. CONCRETE IS TO BE ACCORDING TO SECTION 2513.03, PARAGRAPH A OF THE STANDARD SPECIFICATIONS.
6. STRUCTURAL TUBING SHALL CONFORM TO THE REQUIREMENTS OF ASTM A500 GRADE C. ALL OTHER STEEL SHAPES AND PLATES SHALL CONFORM TO ASTM A709 GRADE 50, UNLESS OTHERWISE NOTED.
7. REINFORCING STEEL SHOWN IS THE MINIMUM REQUIRED.



ELEVATION OF SPECIAL BARRIER RAIL
(REINFORCING STEEL NOT SHOWN FOR CLARITY)

REINFORCING BAR LIST - ONE BARRIER					
EPOXY COATED BARS	BAR	LOCATION	SHAPE	NO.	LENGTH
	5c1	VERTICAL	U	38	5'-2
	5c2	VERTICAL	U	38	3'-5
	5c3	VERTICAL	U	38	5'-3
	5c4	VERTICAL	U	38	5'-2
	4d1	LONGITUDINAL	—	34	8'-8
(FOR INFORMATION ONLY)				TOTAL (LBS.)	952

BENT BAR DETAILS

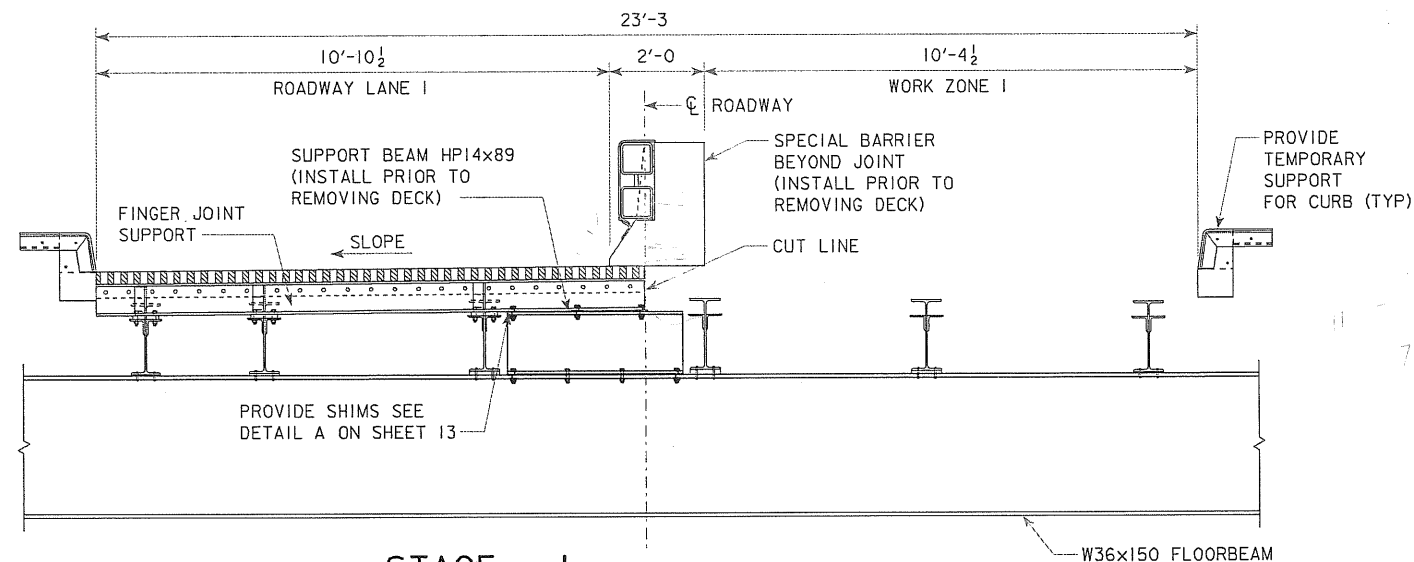


NOTE: ALL DIMENSIONS ARE OUT TO OUT. D=PIN DIAMETER.

CONCRETE PLACEMENT SUMMARY

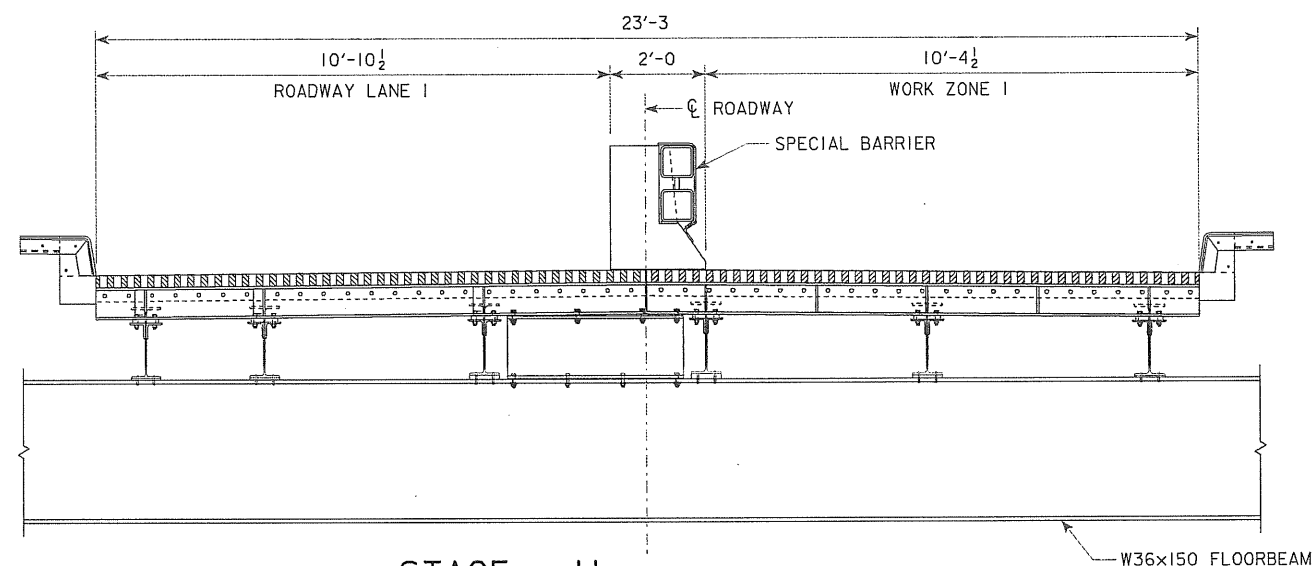
SECTION	UNITS	QUANTITY
BARRIER (FOR INFORMATION ONLY)	CY	4.8

DESIGN FOR REPAIR TO 0°0'00" SKEW
I-74 BRIDGE OVER MISSISSIPPI RIVER (IOWA BOUND)
PIER H FINGER JOINT REPAIR DETAILS
 STA. 29+95.71 (I-74) OCTOBER 2014
SCOTT COUNTY
 IOWA DEPARTMENT OF TRANSPORTATION - HIGHWAY DIVISION
 DESIGN SHEET NO. 15 OF 2 FILE NO. 30976 DESIGN NO. 116



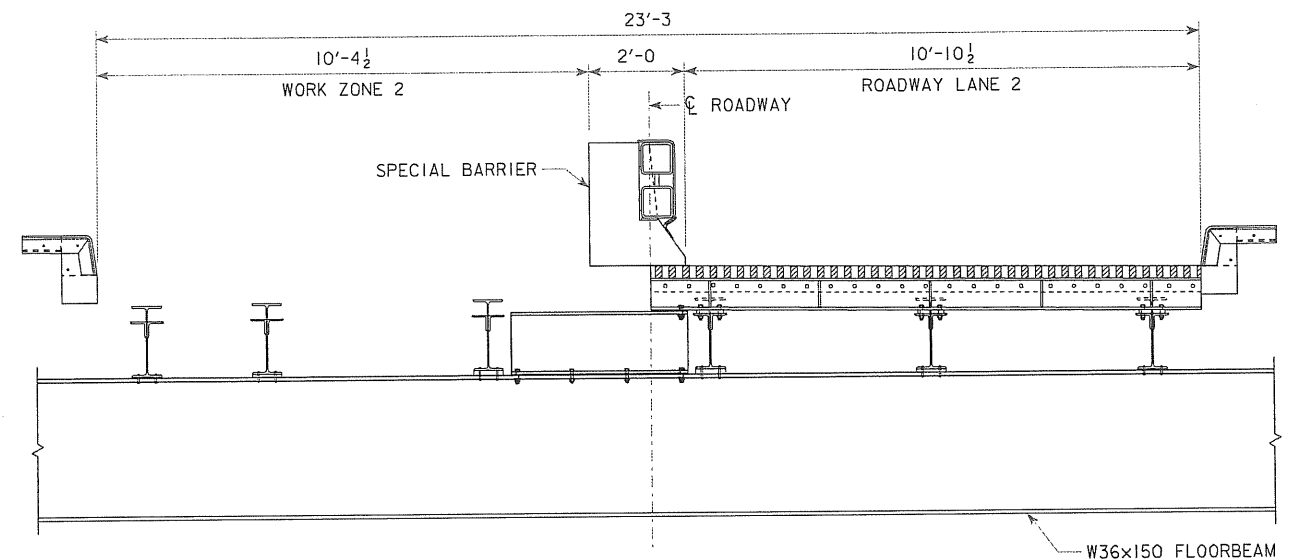
STAGE - I

1. SHIM AND BOLT THE FINGER JOINT SUPPORT TO REMAIN TO THE HP14x89 SUPPORT BEAM.
2. CUT AND REMOVE FINGER JOINT UNITS AND SUPPORTS BEING MODIFIED IN WORK ZONE AS SHOWN.
3. THE CENTER SUPPORT CHANNEL MAY REMAIN.



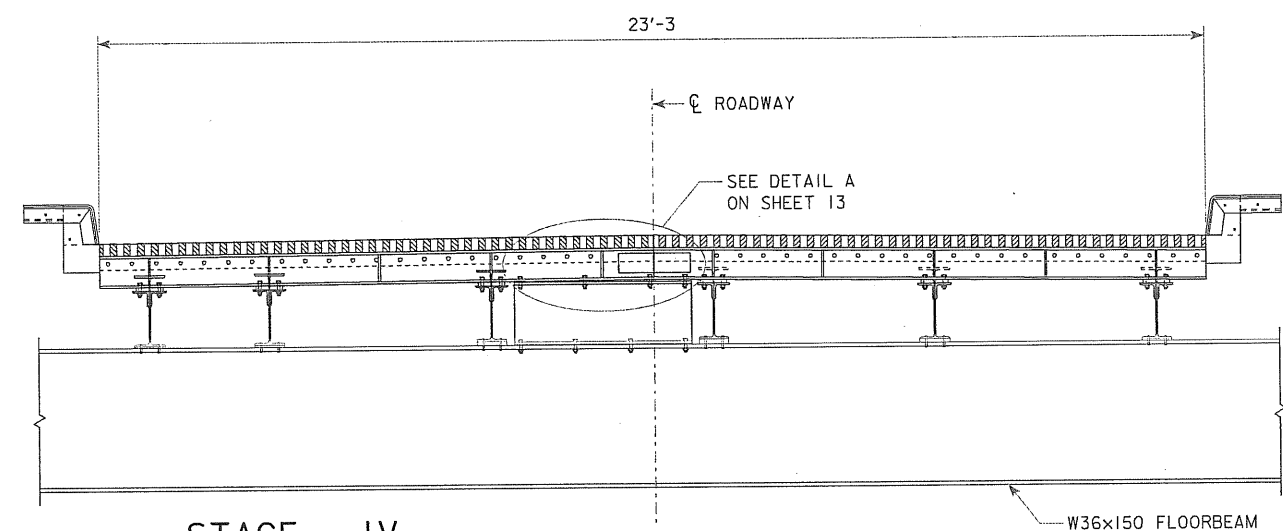
STAGE - II

1. REPLACE FINGER JOINT SUPPORT FRAMING PER PLANS.
2. BOLT THE NEW FINGER JOINT SUPPORT TO THE HP14x89 SUPPORT BEAM.
3. REINSTALL THE FINGER JOINT AND ASSOCIATED HARDWARE.
4. PLACE REINFORCING STEEL AND CAST DECK AS SHOWN ON DESIGN SHEET 14.
5. WHEN WORK IN WORK ZONE I HAS FINISHED, FLIP THE BARRIER TO THE POSITION SHOWN.



STAGE - III

1. CUT AND REMOVE FINGER JOINT UNITS AND SUPPORTS BEING MODIFIED IN WORK ZONE AS SHOWN (BOTH SIDES OF JOINT).
2. THE CENTER SUPPORT CHANNEL MAY REMAIN.



STAGE - IV

1. REPLACE FINGER JOINT SUPPORT FRAMING PER PLANS.
2. BOLT THE NEW FINGER JOINT SUPPORT TO THE HP14x89 SUPPORT BEAM.
3. ATTACH THE FINGER JOINT SUPPORT SPLICE PLATE.
4. REINSTALL THE FINGER JOINT AND ASSOCIATED HARDWARE.
5. PLACE REINFORCING STEEL AND CAST DECK.
6. WHEN WORK IN ZONE 2 HAS FINISHED, REMOVE TEMPORARY BARRIER.

NOTES:

PROVIDE TEMPORARY SUPPORT AS NECESSARY TO ENSURE THE STRUCTURAL INTEGRITY OF THE SYSTEM DURING REPLACEMENT OPERATIONS. ALL COST FOR PROVIDING TEMPORARY SUPPORT SHALL BE INCLUDED IN THE PRICE BID FOR STRUCTURAL STEEL.

ORDER OF STAGING MAY BE SWITCHED TO REPAIR FINGER JOINT SUPPORTS IN LEFT LANE FIRST.

DESIGN FOR REPAIR TO 0°0'00" SKEW
**I-74 BRIDGE OVER
MISSISSIPPI RIVER (IOWA BOUND)
PIER H FINGER JOINT
REPAIR DETAILS**
STA. 29+95.71 (I-74) OCTOBER 2014
SCOTT COUNTY
IOWA DEPARTMENT OF TRANSPORTATION - HIGHWAY DIVISION
DESIGN SHEET NO. 13 OF 2 FILE NO. 30976 DESIGN NO. 116

