

GENERAL NOTES

THESE GENERAL NOTES APPLY TO SHEETS 14B7-11(i) THRU 14B7-11(d).
DETAILS OF CONSTRUCTION, MATERIALS, AND WORKMANSHIP NOT SHOWN ON THIS DRAWING
SHALL CONFORM TO THE PERTINENT REQUIREMENTS OF THE STANDARD SPECIFICATIONS
AND THE APPLICABLE SPECIAL PROVISIONS.

THIS STANDARD DETAIL DRAWING CONSISTS OF 6 SHEETS, 14B7-11(a) THRU 14B7-11(f), DETAILS AND REQUIREMENTS FOR THE FABRICATION AND INSTALLATION OF CONCRETE BARRIER TEMPORARY PRECAST, 12-6" (CBTP12.5) ARE SHOWN ON 4 SHEETS, 14B7-11(a) THRU 14B7-11(d) DETAILS AND REQUIREMENTS FOR CONCRETE BARRIER TEMPORARY PRECAST, 10'-0" (CBTP10.0) ARE SHOWN ON 2 SHEETS, 14B7-11(e) THRU 14B7-11(f), CONCRETE BARRIER TEMPORARY PRECAST, 10'-0" (CBTP10.0) MAY BE USED UNTIL MAY 31, 2013, BUT ONLY IF ALL THE FOLLOWING CONDITIONS ARE MET:

THE CBP10.0 WAS MANUFACTURED BEFORE JUNE 1, 2003. THE CBP10.0 MEETS ALL THE REQUIREMENTS OF STANDARD DETAIL DRAWINGS 14B7-II(e) AND 14B7-II(f). THE CBP10.0 IS IN GOOD CONDITION.

DO NOT INTERMIX CONCRETE BARRIER TEMPORARY PRECAST, 12'-6" (CBTP12.5) WITH CONCRETE BARRIER TEMPORARY PRECAST, 10'-0" (CBTP10.0) IN ANY SINGLE RUN OR INSTALLATION.

USE ASTM A-615, GRADE 60, DEFORMED STEEL BARS FOR BARS 4A1, 6A2, 5B1 AND 4C1 IN THE BARRIER SECTION AND FOR 4V1, 4V2, 4V3, 4V4, 4V5, 4V6, 4F1, 4F2 AND 5F3 IN THE BARRIER LAPPER SECTION.

LOOP BARS 601, 602 AND 603 SHALL BE $\frac{3}{4}$ " SMOOTH STEEL BARS WITH A MINIMUM YIELD STRENGTH OF 60 KSI, A TENSILE STRENGTH OF NOT LESS THAN 1.25 TIMES THE YIELD STRENGTH BUT A MINIMUM OF 80 KSI, A MINIMUM 14% ELONGATION IN 8 INCHES AND PASSING A 180 DEGREE BEND TEST USING A 3-1/2" PIN BEND DIAMETER FOR BEND TESTS. THE LOOPS SHALL BE INSTALLED WITHIN 1/8" OF THE PLAIN DIMENSION.

CONSTRUCT LIFTING SLOTS AS SPECIFIED ON THE PLANS TO FACILITATE THE DRAINAGE OF WATER AFTER INSTALLATION.

PLACE BARRIER ON A PAVED SURFACE. REMOVE ALL LOOSE DIRT AND SAND FROM THE ROADWAY SURFACE PRIOR TO PLACEMENT OF THE BARRIER.

MARK ONE END OF EACH BARRIER PERMANENTLY BY STAMPING OR FORMING INTO THE BARRIER THE FOLLOWING INFORMATION:

b. MANUFACTURER
c. DATE MANUFACTURED (MONTH AND YEAR)

1" CHAMFER TO PREVENT SPALLING.

A 3/8" HOLE IN THE CONNECTION PIN, AT THE LOCATION SHOWN, IS ACCEPTABLE, BUT NOT REQUIRED..

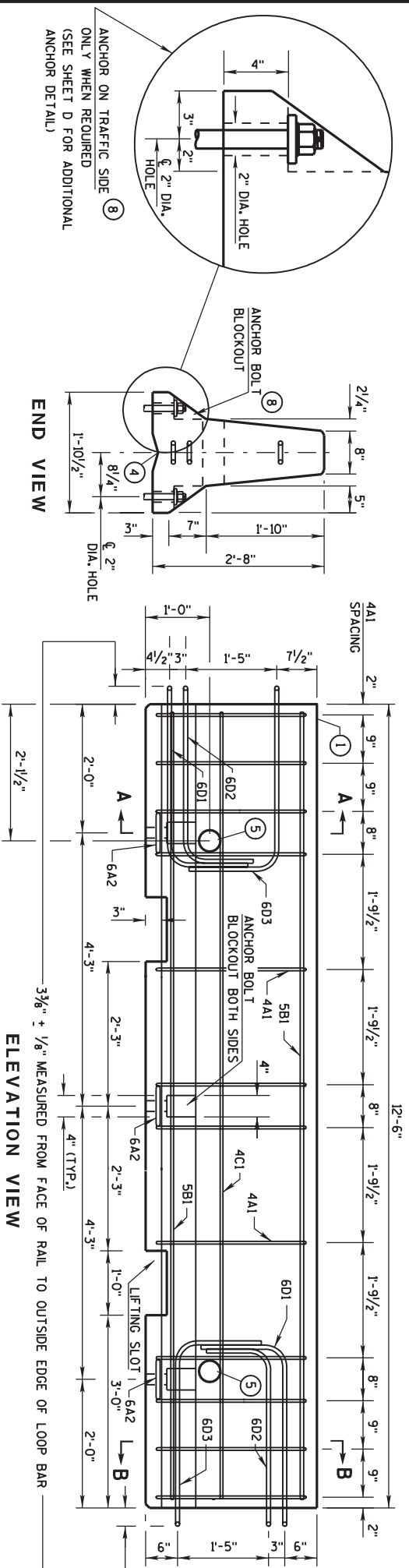
"V" NOTCH IS OPTIONAL.

THE 4" DIAMETER, 11 GAUGE STEEL, ROUND MECHANICAL TUBING SLEEVE FOR LIFTING (OPTIONAL).

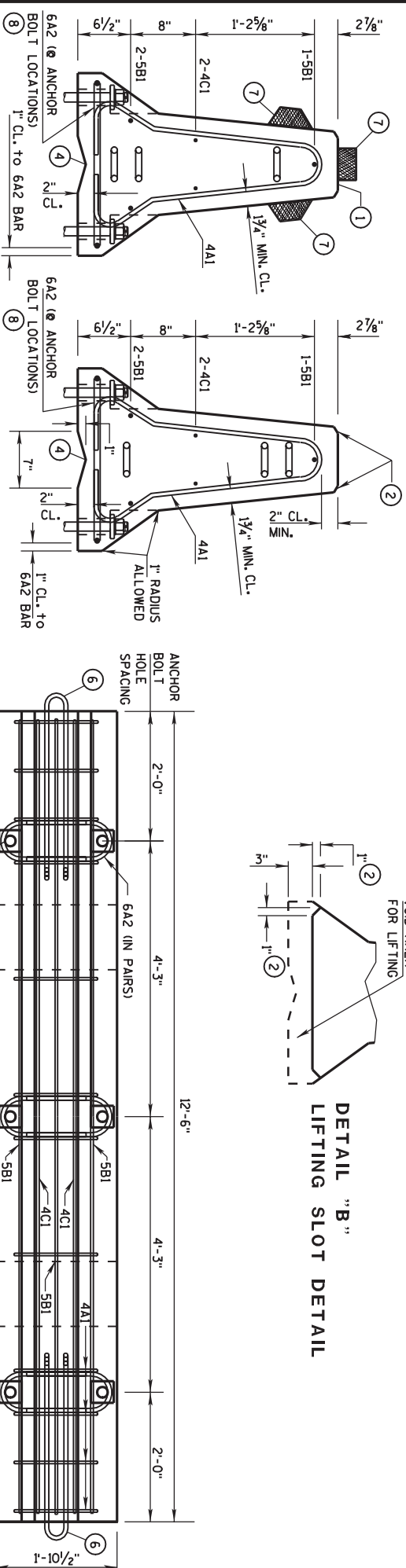
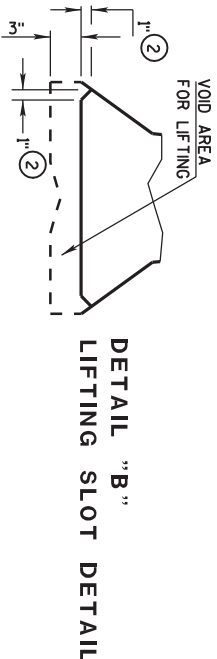
NEVER USE LOOP BARS (6D1, 6D2 OR 6D3) TO LIFT, MOVE OR REPOSITION THE BARRIER.

USE DELINEATOR CONFORMING TO SECTION 633 OF THE STANDARD SPECIFICATIONS. CONTRACTOR MAY USE ALTERNATE SHAPES AND HOUSING. INSTALL DELINEATORS ACCORDING TO MANUFACTURES INSTRUCTION. INSTALL YELLOW REFLECTORS WHEN BARRIER IS LOCATED TO THE LEFT OF TRAFFIC AND WHITE REFLECTORS WHEN BARRIER IS LOCATED TO THE RIGHT OF TRAFFIC. SPACE DELINEATORS A MAXIMUM OF 25 FEET APART. PROVIDE TOP MOUNTED DELINEATORS IN ADDITION TO THE SIDE MOUNTED DELINEATORS ON ALL BARRIER INSTALLATIONS LOCATED ON A CURVED ALIGNMENT LONGER THAN 200 FEET AND ON BARRIERS USED TO SEPARATE OPPOSING TRAFFIC.

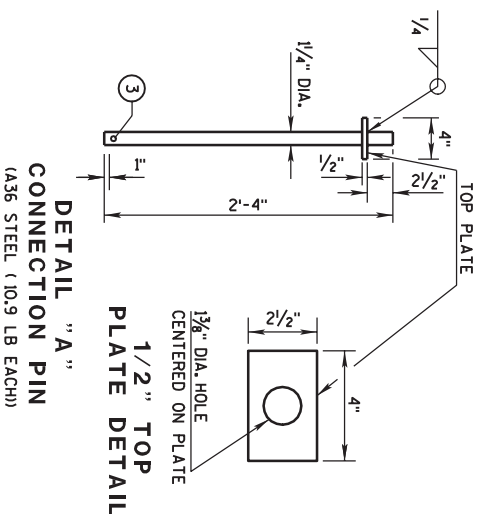
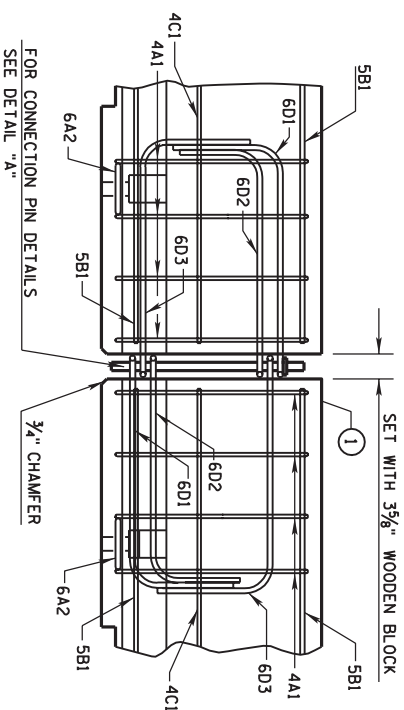
SEE SHEET D FOR ANCHORING CRITERIA.



ELEVATION VIEW



DETAILS OF BARRIER SECTION



DETAILS OF BARRIER CONNECTION

DETAIL "A"
CONNECTION PIN
(A36 STEEL (10.9 LB EACH))

**CONCRETE BARRIER
TEMPORARY PRECAST, 12'-6"**

STATE OF WISCONSIN
DEPARTMENT OF TRANSPORTATION