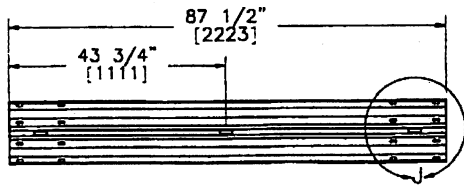
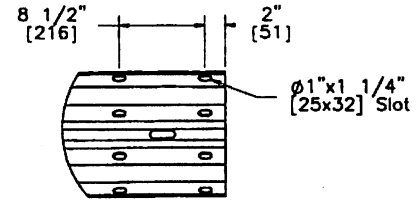


Figure G-16. Rail Details, Test No. MGS221-2 (English)

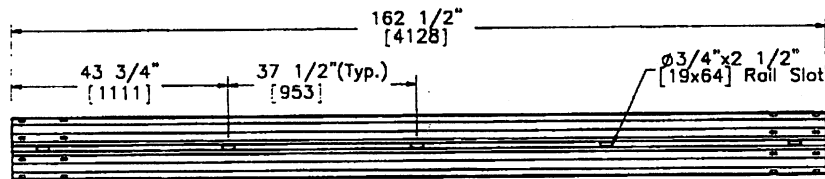
FHWA
 LETTER
 B-2111
 JUNE 2011
 February 24, 2010
 MWRSSF Report No. TRP-03-185-10



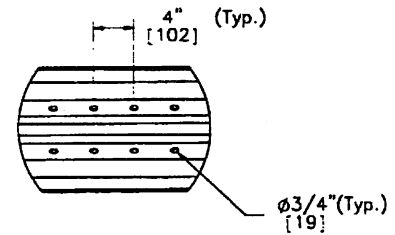
6'-3" [1905] W-Beam Section, 12 gauge [2.7]
Part a5



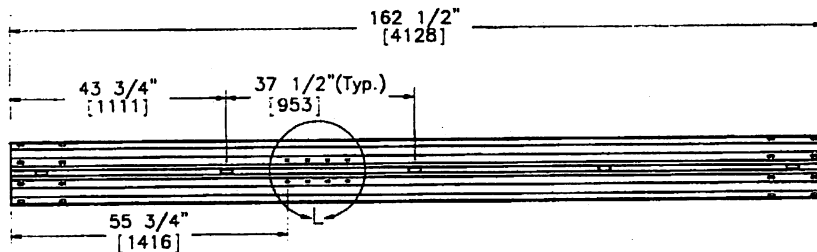
DETAIL J
SCALE 1:15



12'-6" [3810] W-Beam Section, 12 gauge [2.7]
Part a3



DETAIL L
SCALE 1:15



12'-6" [3810] W-Beam Section, 12 gauge [2.7], End Section
Part a4



Midwest Roadside
Safety Facility

MGS with White Pine
Wood Posts

Rail Section Details

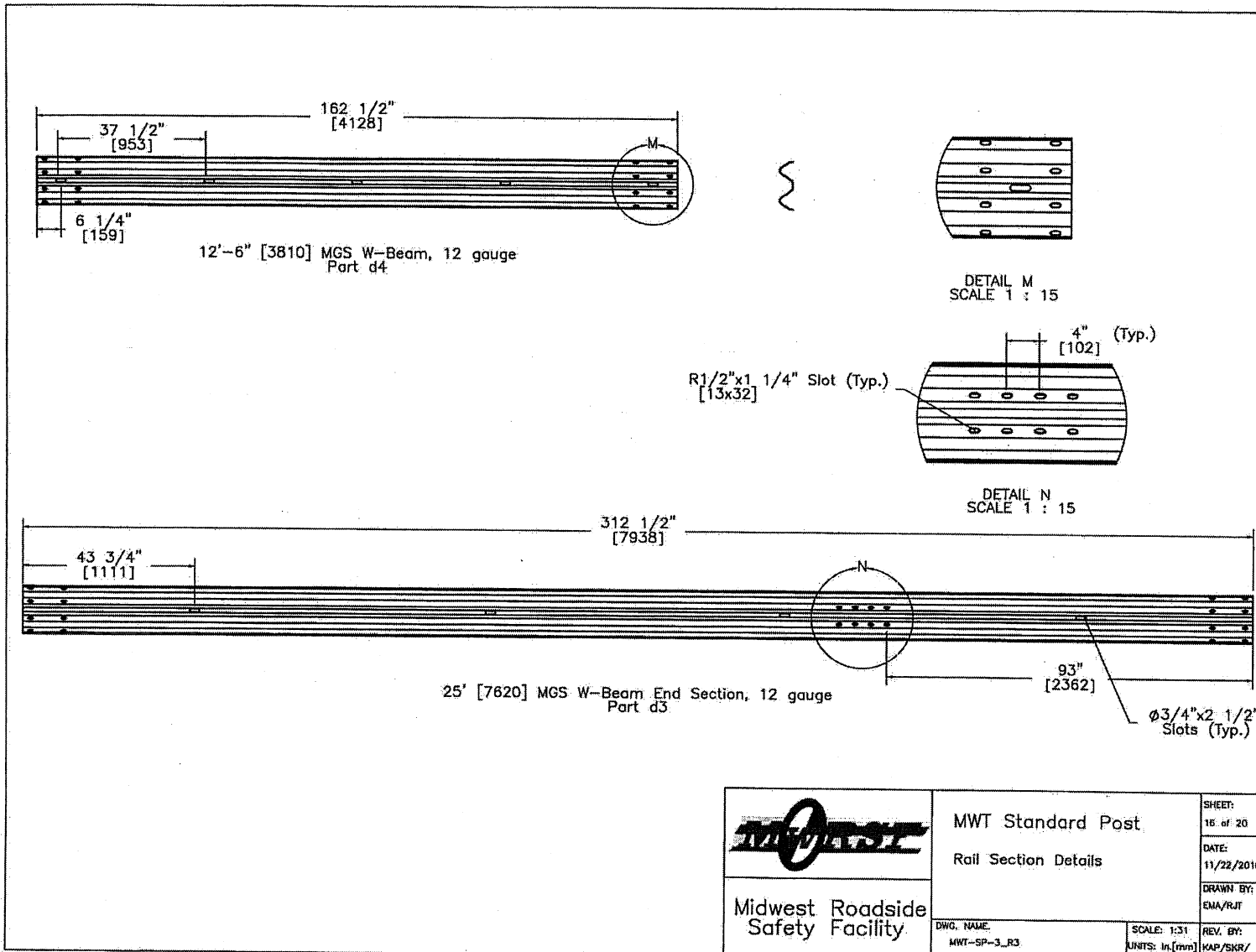
DWG. NAME:
MGSWP-1_R11


SCALE: 1:30
UNITS: - (mm)

SHEET
9 of 11
DATE:
06/16/2011
DRAWN BY:
M/W/R/JT
M/DV/JSP/D
M/W

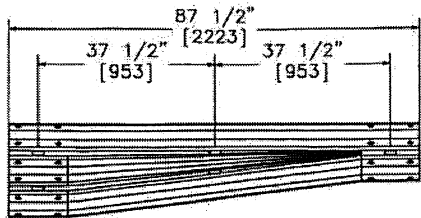
REV. BY:
SKR/RMB/
CAL/RMT

FHWA
 LETTER B-230
 1-12-12

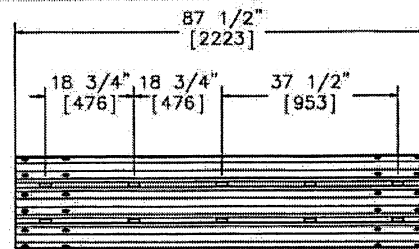


 Midwest Roadside Safety Facility	MWT Standard Post	SHEET: 15 of 20
	Rail Section Details	DATE: 11/22/2010
		DRAWN BY: EMA/RJT
DWG. NAME: MWT-SP-3_R3	SCALE: 1:31 UNITS: In, [mm]	REV. BY: KAP/SKR/ RJK

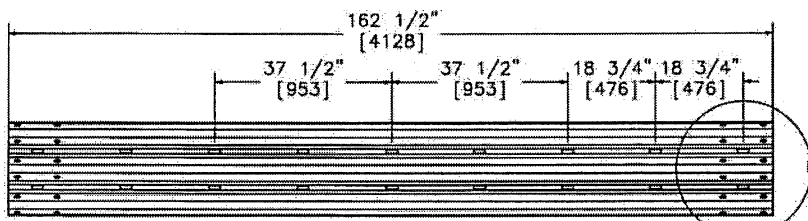
FHWA
 LETTER B-231
 1-27-12



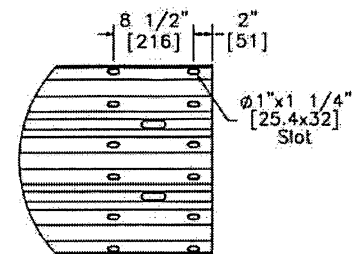
6'-3" [1905] W to Thrie Beam Transition Section



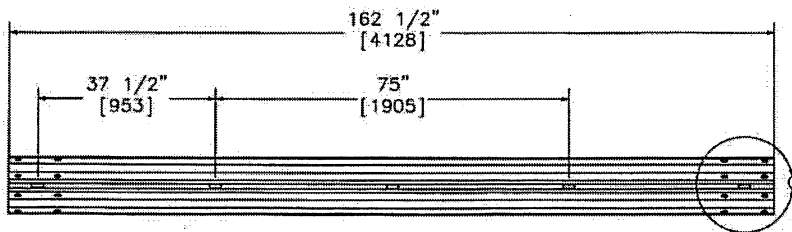
6'-3" [1905] Thrie Beam Section



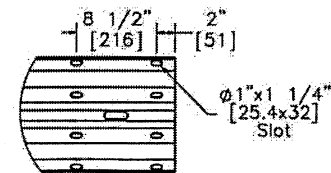
12'-6" [3810] Thrie Beam Section



DETAIL F
SCALE 1 : 16



12'-6" [3810] W-Beam Section



DETAIL G
SCALE 1 : 16



Midwest Roadside
Safety Facility

MWT Wood Post

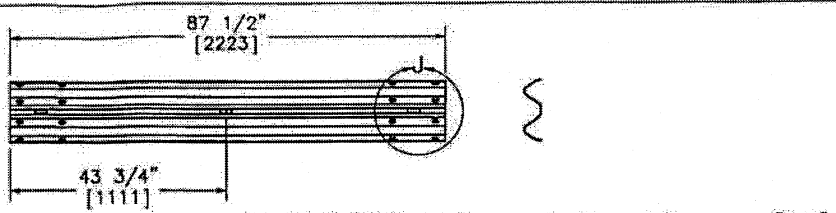
Rail Section Details:

DWG. NAME:
MWT-SP-Wood_RS

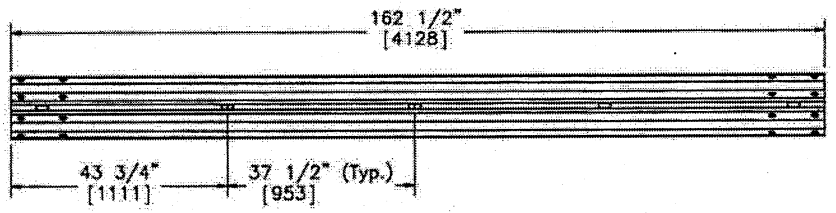
SCALE: 1:100
UNITS: in.(mm)

SHEET:
5 of 6
DATE:
7/12/2011
DRAWN BY:
EMA/RJT/
JGP/MDM
REV. BY:
KAL/SKR/
RNF

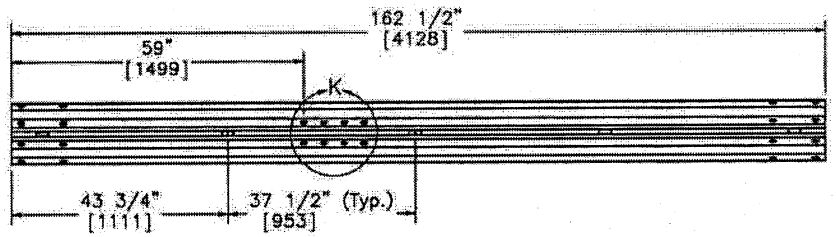
FHWA
LETTER
B-236
5-30-12



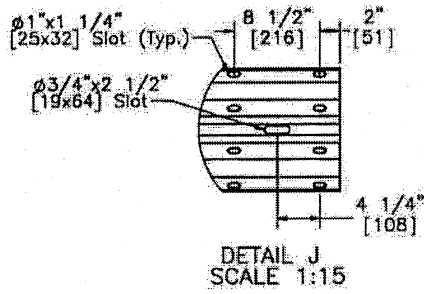
6'-3" [1905] W-Beam Section, 12 gauge [2.7]
Part a3



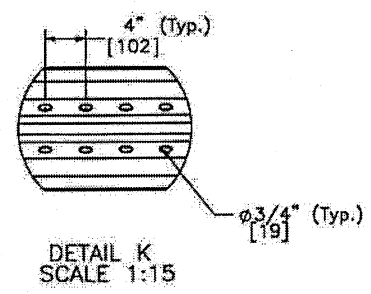
12'-6" [3810] W-Beam Section, 12 gauge [2.7]
Part a4



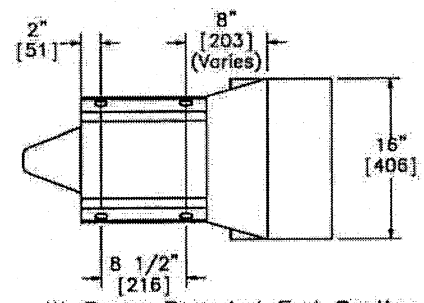
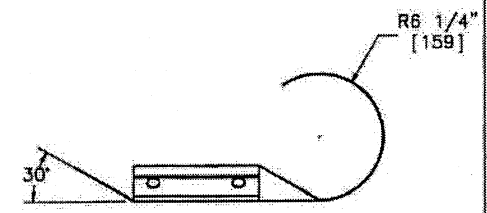
12'-6" [3810] W-Beam Section, 12 gauge [2.7], End Section
Part a5



DETAIL J
SCALE 1:15



DETAIL K
SCALE 1:15



W-Beam Rounded End Section
12 gauge [2.7]
Part a6
SCALE 1:15

Notes: (1) If rounded W-beam end section cannot be found locally use a spoon end section.



Midwest Roadside Safety Facility

Wisconsin DOT Project MGS with Standard Downstream Anchorage System		SHEET: 13 of 15
Rail Section Details		DATE: 5/25/2012
DWG. NAME: DS-Anchorage-31in_R5	SCALE: 1:30 UNITS: in/mm	DRAWN BY: JGP
		REV. BY: KAL/RKE

FHWA
 LETTER B-256
 12-18-15