

ROADWAY DESIGN DIVISION

Computer: DRDESIGN187

User: dor13195

Date: 18-AUG-2015 10:53

File: 7400e01.dgn  
Scale: 1:100

CONNECTION NOTES:

FOR DIVIDED ROADWAY

INSTALL THRIE-BEAM END SHOE,  
BETWEEN NESTED GUARDRAIL ELEMENTS.  
(SUBSIDIARY TO BRIDGE APPROACH SECTION)

TRAFFIC FLOW 

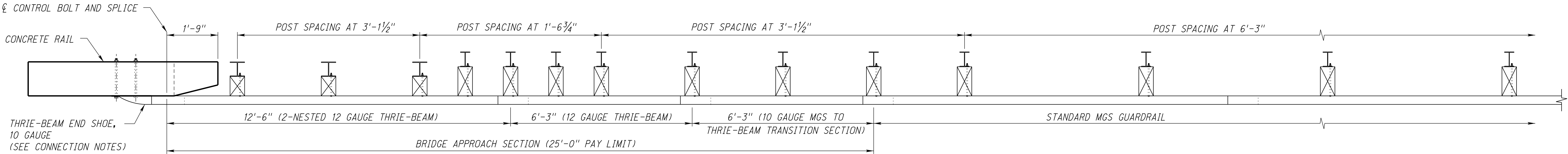
FOR 2-LANE ROADWAY

FOR APPROACHING TRAFFIC  
INSTALL THRIE-BEAM END SHOE,  
BETWEEN NESTED GUARDRAIL ELEMENTS.  
(SUBSIDIARY TO BRIDGE APPROACH SECTION)

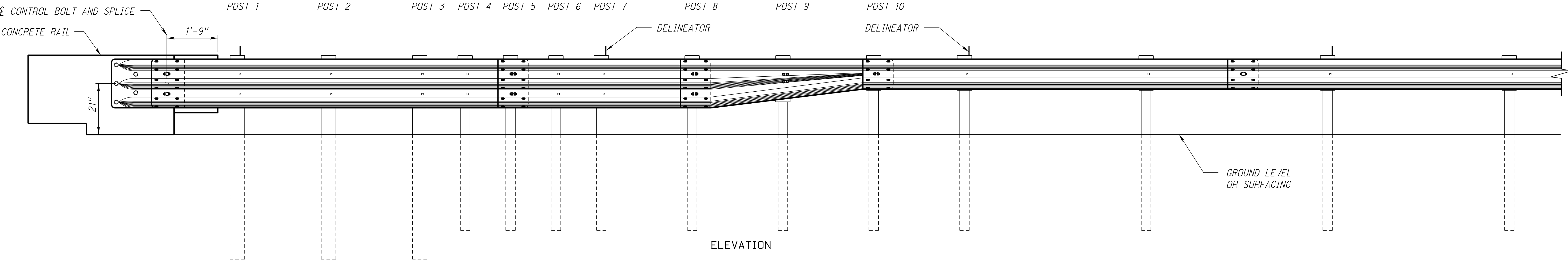
FOR DEPARTING TRAFFIC  
INSTALL THRIE-BEAM END SHOE,  
OUTSIDE OF THE NESTED GUARDRAIL ELEMENTS.  
(SUBSIDIARY TO BRIDGE APPROACH SECTION)

LEGEND

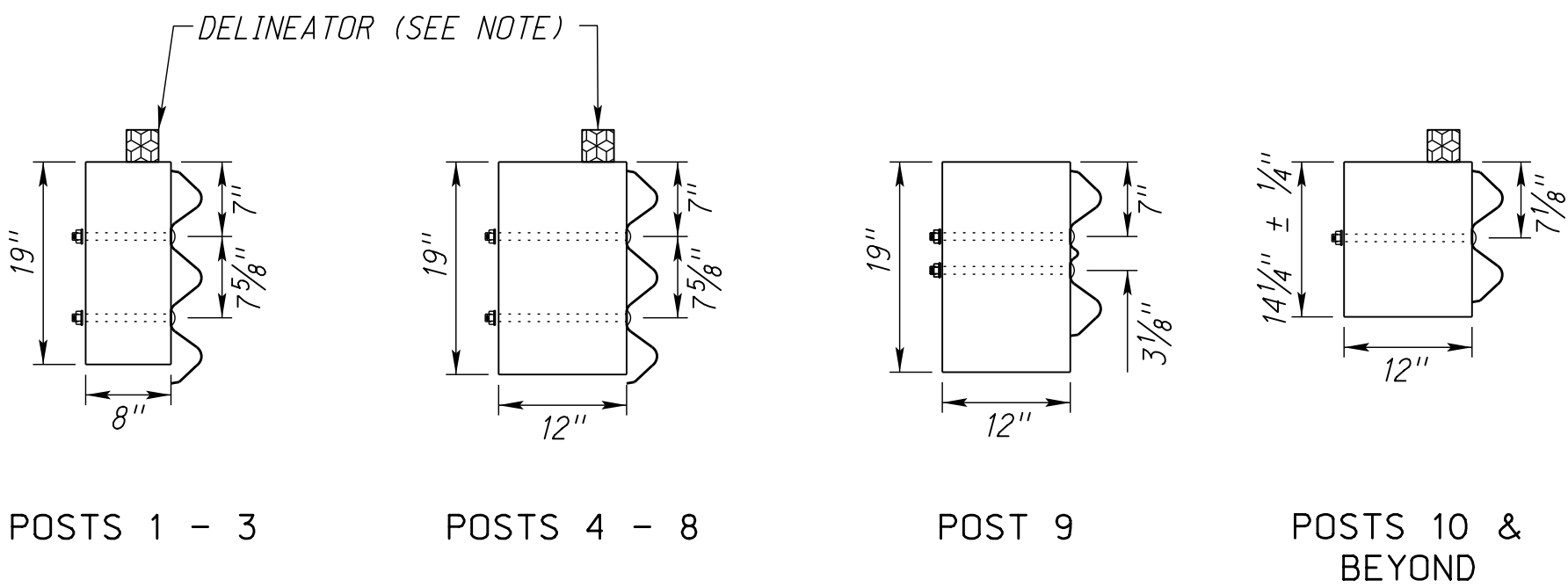
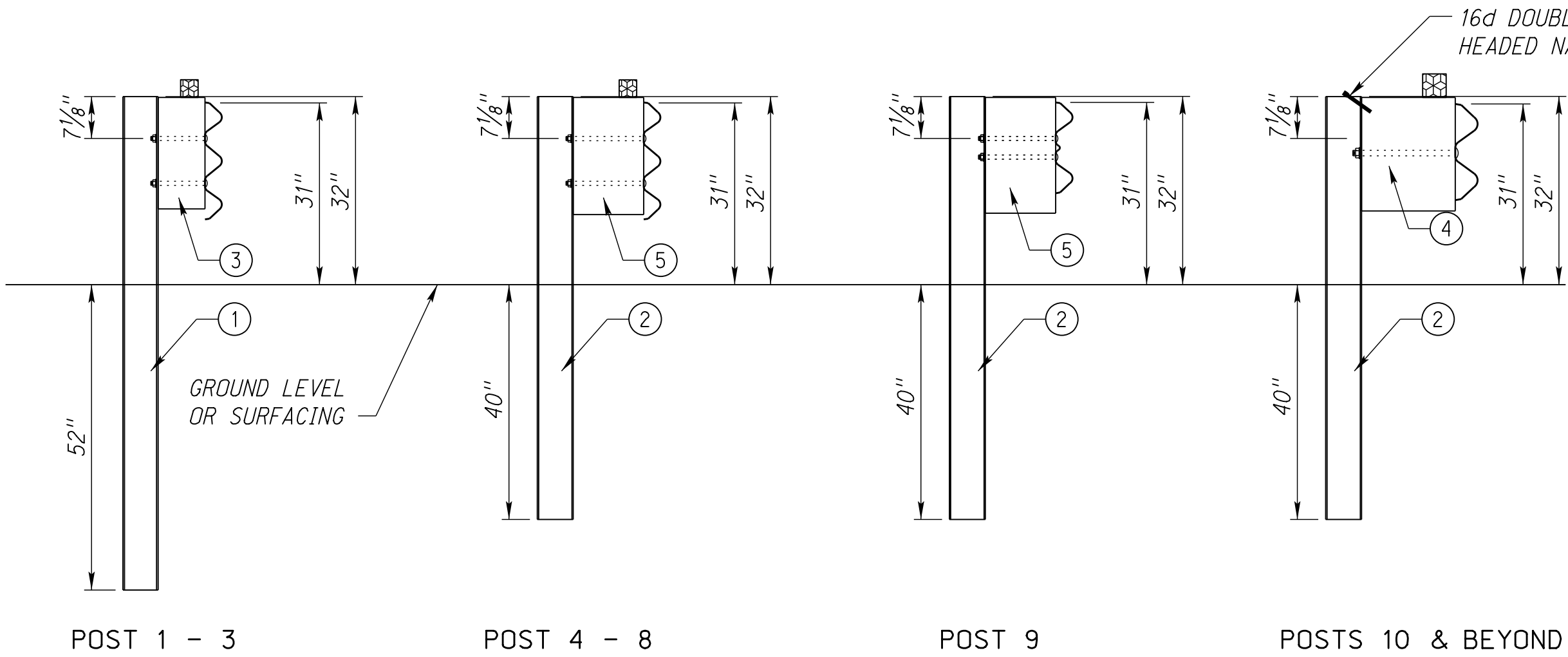
- ① W6 x 15 x 7' POST
- ② W6 x 9 x 6' POST
- ③ 6" x 8" x 19" OFFSET BLOCK
- ④ 6" x 12" x 14 1/4" ± 1/4" OFFSET BLOCK
- ⑤ 6" x 12" x 19" OFFSET BLOCK



PLAN VIEW



ELEVATION



BLOCK DETAILS

NOTES:

DELINEATORS SUBSIDIARY TO BRIDGE APPROACH SECTION.

BUTTON HEAD BOLT 5/8" DIA. x LENGTH AS REQUIRED,  
SECURED WITH WASHER AND HEX NUT.

ALL STEEL MEMBERS SHALL BE GALVANIZED IN ACCORDANCE  
WITH THE STANDARD SPECIFICATIONS.

REV. NO.	DATE	DESCRIPTION OF REVISION
R1	JUL 14	ADDED NAIL POST 10 & BEYOND
NEBRASKA DEPARTMENT OF ROADS STANDARD PLAN NO. 740-R1 MIDWEST GUARDRAIL SYSTEM BRIDGE APPROACH SECTION		
ACCEPTED BY FHWA FOR USE ON THE NATIONAL HIGHWAY SYSTEM:		DATE
		ORIGINAL: AUGUST 25, 2011 DATE
		1 2

Approved Date mmm yyyy

Effective Letting Date mmm yyyy

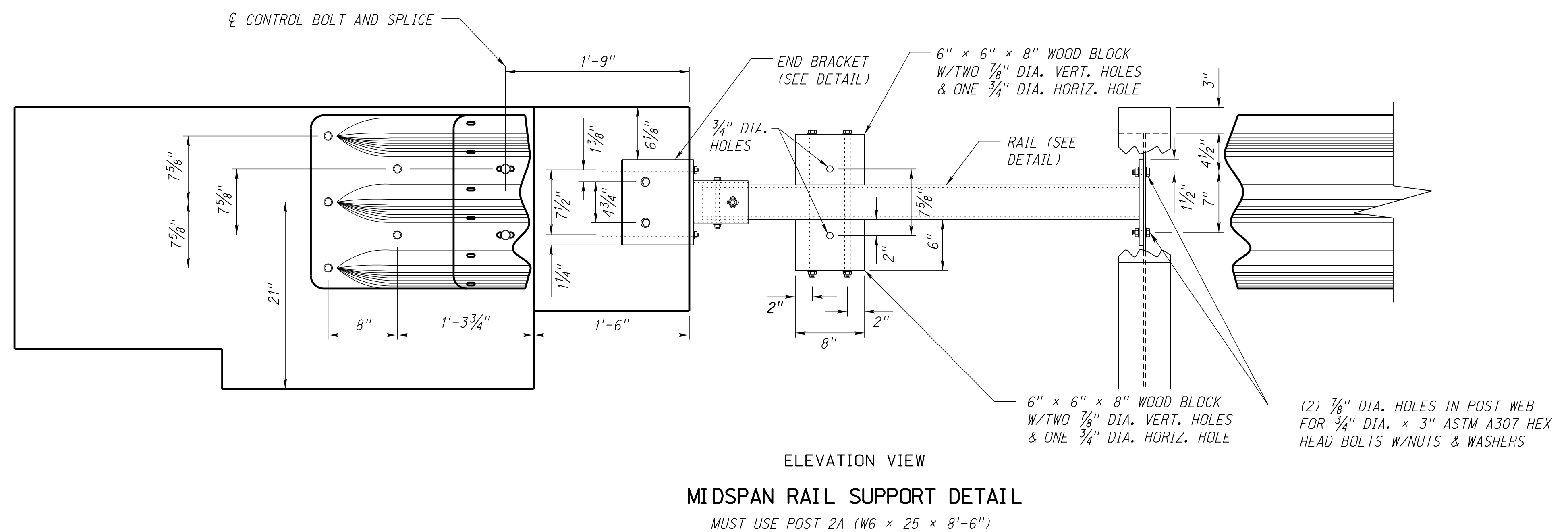
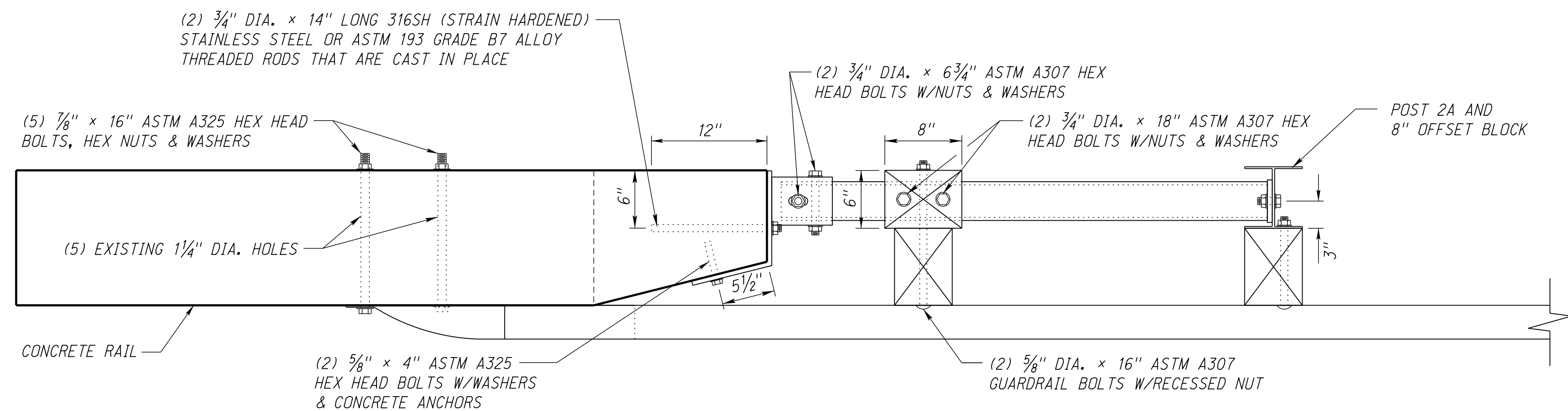
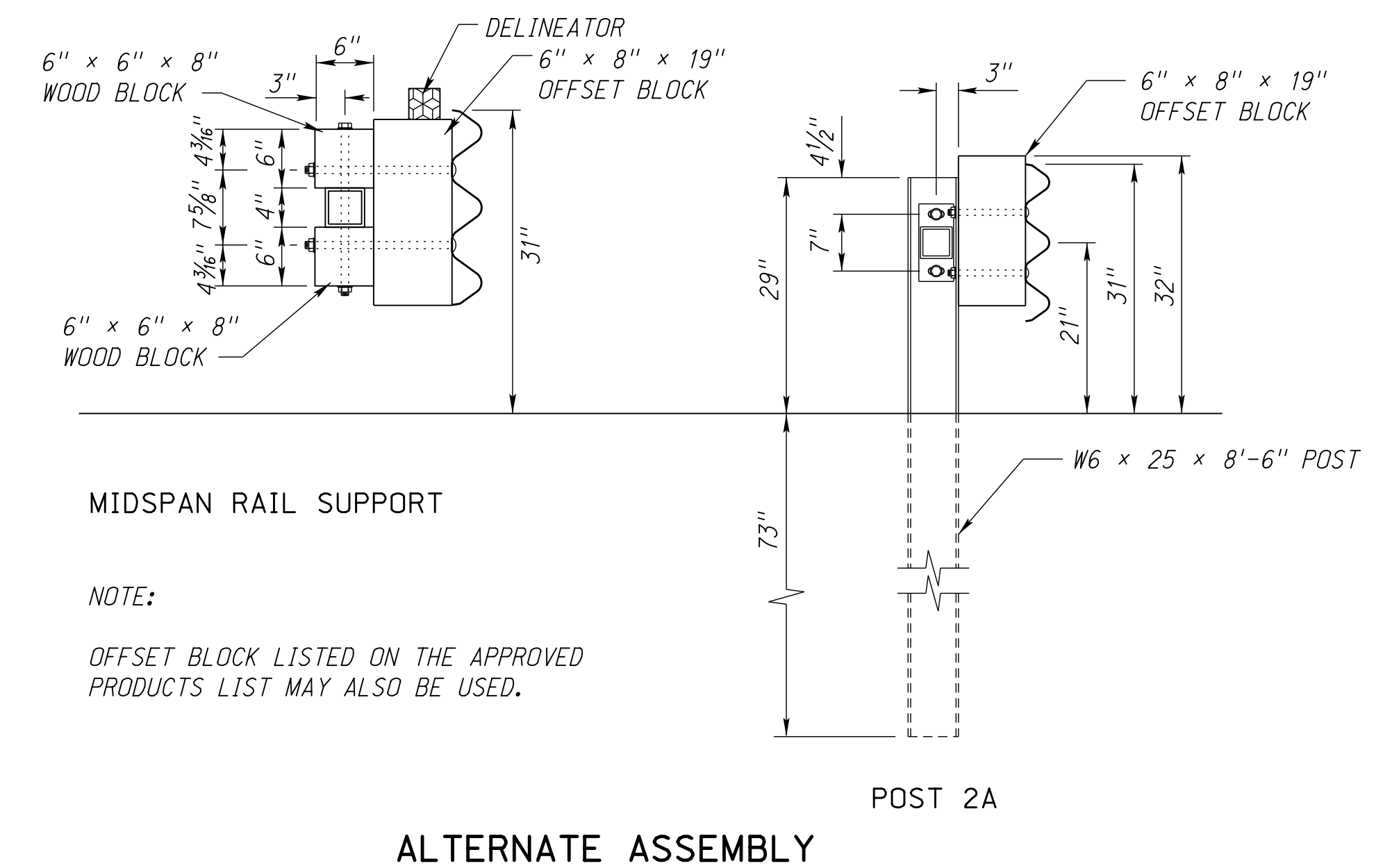
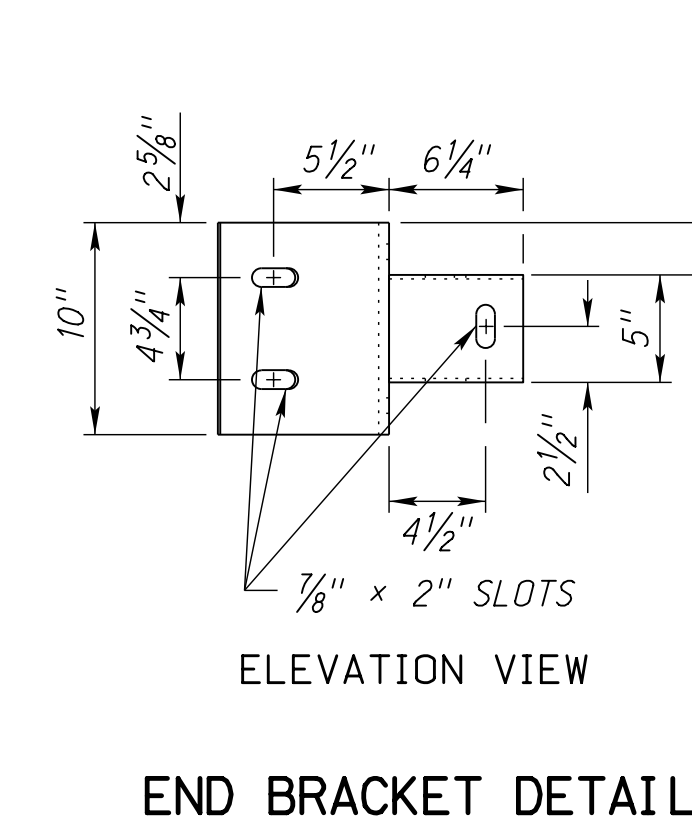
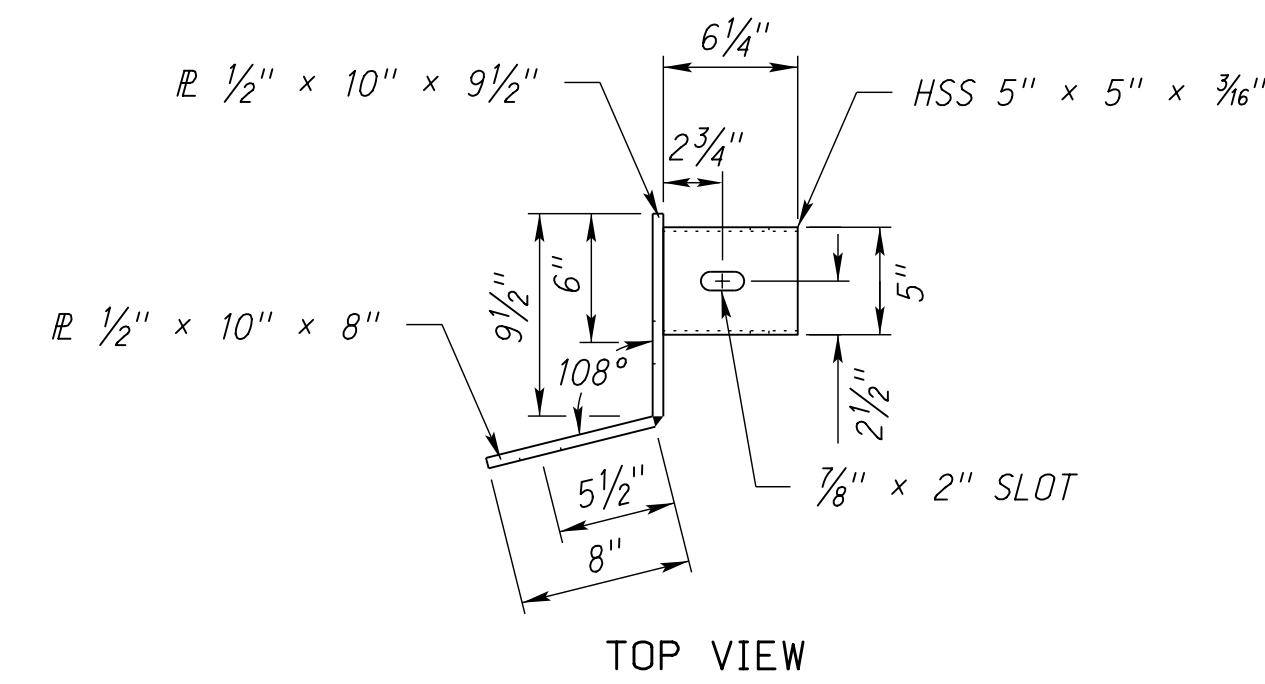
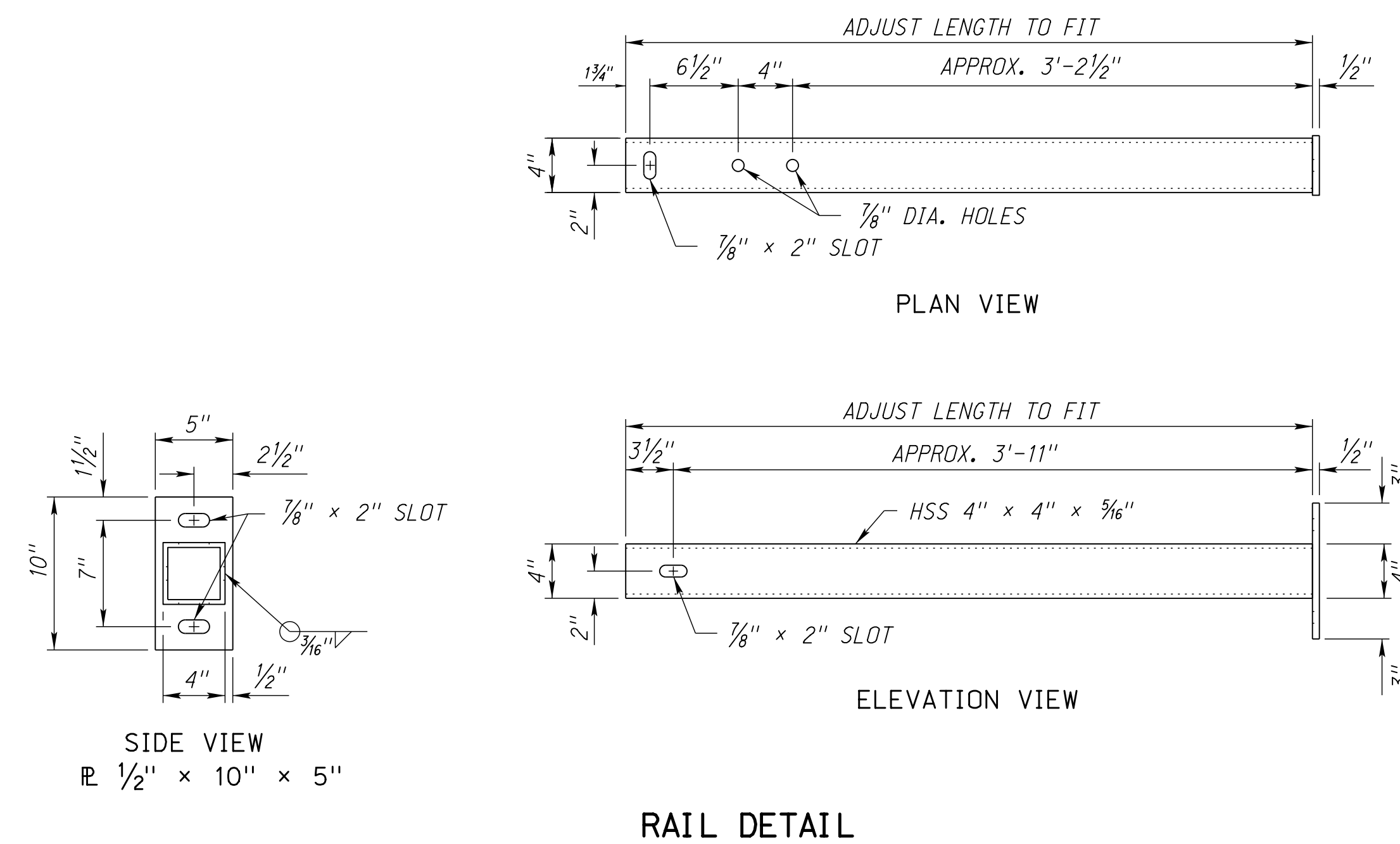
ROADWAY DESIGN DIVISION

Computer: DRDESIGN187

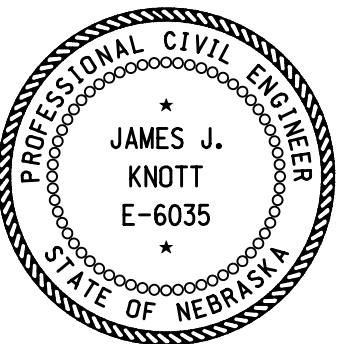
User: dor13195

Date: 18-AUG-2015 10:53

File: 74000e01.dgn  
Scale: 1:100



NOTE:  
DELINEATORS SUBSIDIARY TO BRIDGE APPROACH SECTION.  
ALL STEEL MEMBERS SHALL BE GALVANIZED IN ACCORDANCE WITH THE STANDARD SPECIFICATIONS.  
IN LIEU OF THE CAST IN PLACE 3/4" DIA. x 14" ANCHOR BOLTS, THE CONTRACTOR MAY GROUT 3/4" DIA. x 12" BOLTS INTO 7/8" DIA. x 12" DRILLED HOLES. ALL GROUT USED SHALL BE AN APPROVED NON-SHRINK GROUT. FOR 5/8" DIA. BOLTS USE 3/4" DIA. HOLES. NO ADDITIONAL COMPENSATION WILL BE ALLOWED FOR THIS OPTION.

R1	JUL 14	ADDED NAIL POST 10 & BEYOND
REV. NO.	DATE	DESCRIPTION OF REVISION
NEBRASKA DEPARTMENT OF ROADS STANDARD PLAN NO. 740-R1 MIDWEST GUARDRAIL SYSTEM BRIDGE APPROACH SECTION		
ACCEPTED BY FHWA FOR USE ON THE NATIONAL HIGHWAY SYSTEM:		
		
DATE		2
ORIGINAL: AUGUST 25, 2011 DATE		2