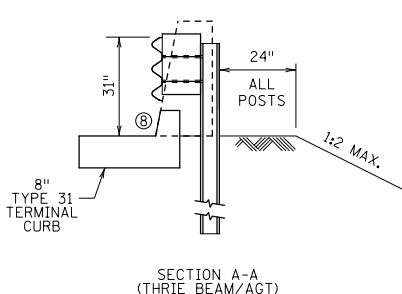
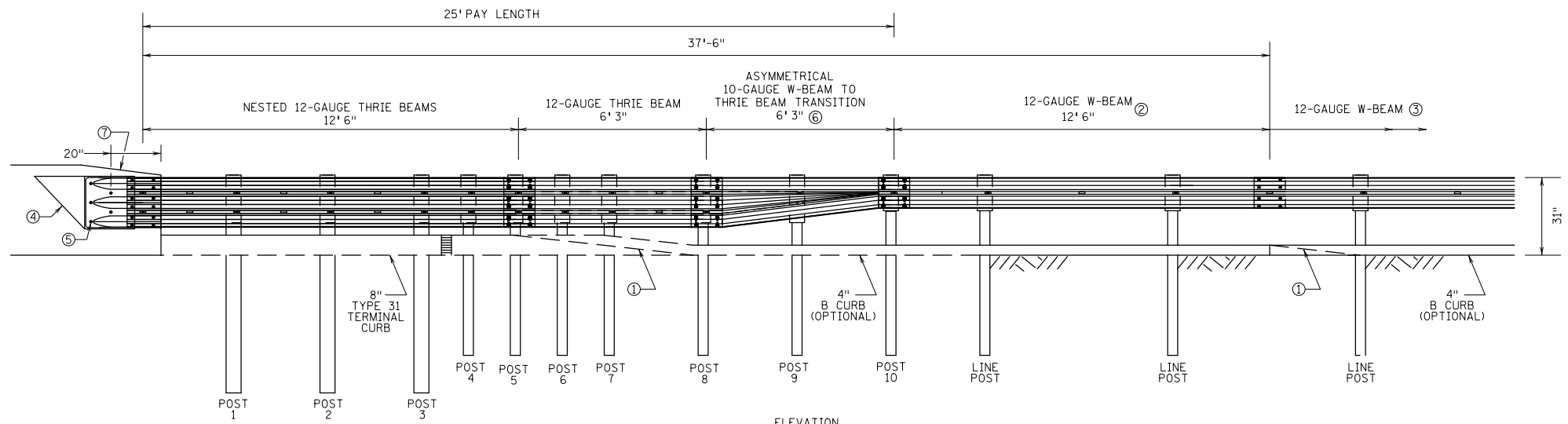
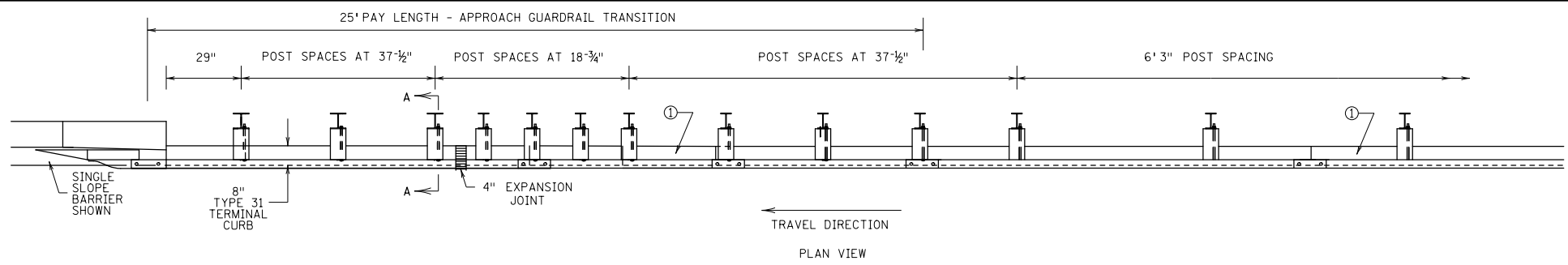


PLOTTED/REVISED:  
13-APR-2016 13:48

DISTRICT #: Design Standards  
USER NAME: browlth  
694-AGT\_Type31\_SingleSlope\_CurbOption.dgn  
IP: PWP-dt/31712-694-AGT\_Type31\_SingleSlope\_CurbOption.dgn



TRANSITION POST/BLOCK SIZING		
POST #	STEEL POST SIZE	BLOCKOUT SIZE
1-3	84" - W6 x 15	6 x 12 x 19"
4-9	72" - W6 x 9	6 x 12 x 19"
10	72" - W6 x 9	6 x 12 x 14"

- NOTES:
- ALL POSTS STAMPED WITH POST SIZE AND VISIBLE AFTER BEING PLACED. W-BEAM RAIL SPLICE BOLTS AND NUTS AS SPECIFIED BY AASHTO SPEC. M 180.
  - ① CURB TRANSITION, NO CHANGE IN CURB DESIGN CAN OCCUR BETWEEN POST 8 AND 37'-6" UPSTREAM FROM THE BARRIER ANCHORAGE PLATE. CURB HEIGHT TRANSITION RATE OF 9:1 (3' PER 4")
  - ② WHERE CURB EXTENDS UPSTREAM OF POST NO. 8, THIS 12'-6" SECTION OF 12-GAUGE W-BEAM RAIL SHALL BE NESTED. THIS ADDED COMPONENT IS INCIDENTAL.
  - ③ A MINIMUM OF 12'-6" OF W-BEAM RAIL IS REQUIRED BEFORE END TREATMENT.
  - ④ SINGLE SLOPE CONNECTION WEDGE PLATE (STANDARD PLATE 8352).
  - ⑤ THRIE BEAM ANCHORAGE PLATE (STANDARD PLATE 8350).
  - ⑥ SEE STANDARD PLAN 5-297.695.
  - ⑦ 1:8 VERTICAL TRANSITION
  - ⑧ FACE OF CURB SLOPE MATCHES BARRIER SLOPE. CURB GUTTER LINE MATCHES TOE OF SINGLE SLOPE BARRIER.



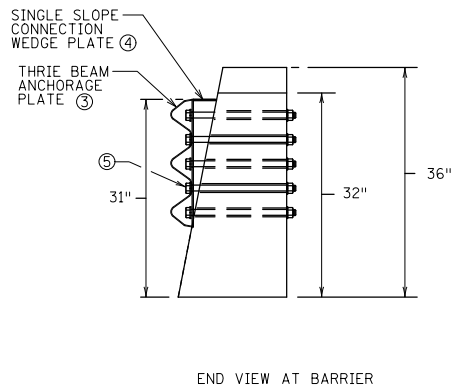
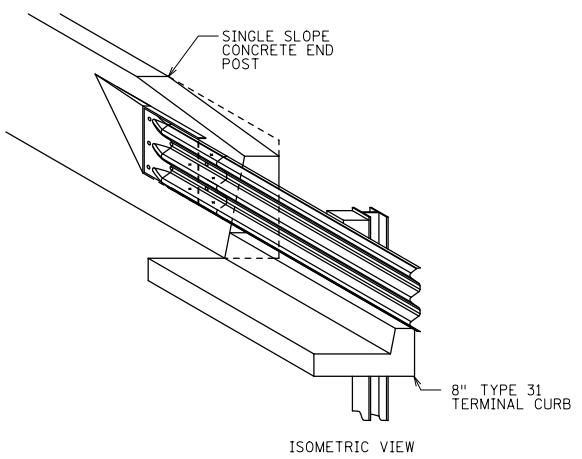
REVISD:

APPROVD:

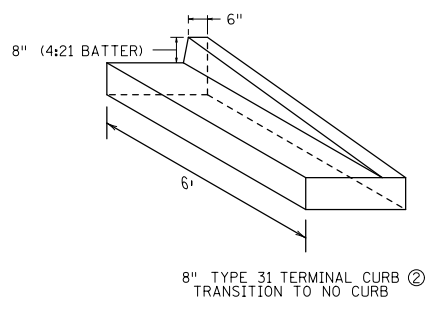
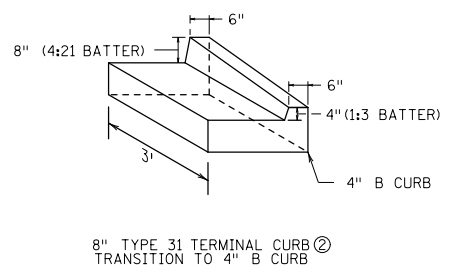
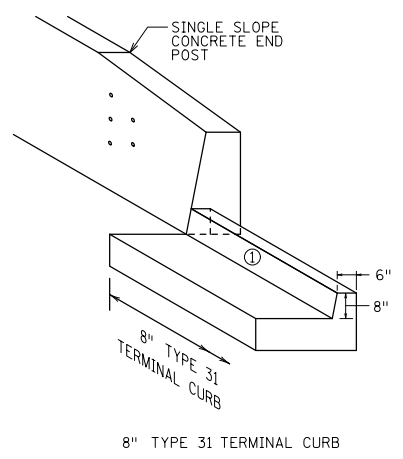
NOT APPROVED

STATE DESIGN ENGINEER

APPROACH GUARDRAIL TRANSITION TYPE 31 ASSEMBLY DETAILS	
STANDARD PLAN 5-297.694	1 OF 5



SINGLE SLOPE END POST CONNECTION



- NOTES:
- ① FACE OF CURB SLOPE MATCHES BARRIER SLOPE. BARRIER GUTTER LINE MATCHES CURB GUTTER LINE.
  - ② CURB FROM TERMINAL SHALL COMPLETE TRANSITION PRIOR TO POST 8.
  - ③ SEE STANDARD PLATE 8350.
  - ④ SEE STANDARD PLATE 8352.
  - ⑤ FIVE GALVANIZED 7/8" DIA. H.S. BOLTS (ASTM A325) AND 8 GA. WASHERS IN 1" PIPE SLEEVES, DRAWN TIGHT.

 STATE DESIGN ENGINEER	REVISED:
	APPROVED: NOT APPROVED

APPROACH GUARDRAIL TRANSITION TYPE 31 END POST CONNECTION AND CURB DETAILS	
STANDARD PLAN 5-297.694	4 OF 5