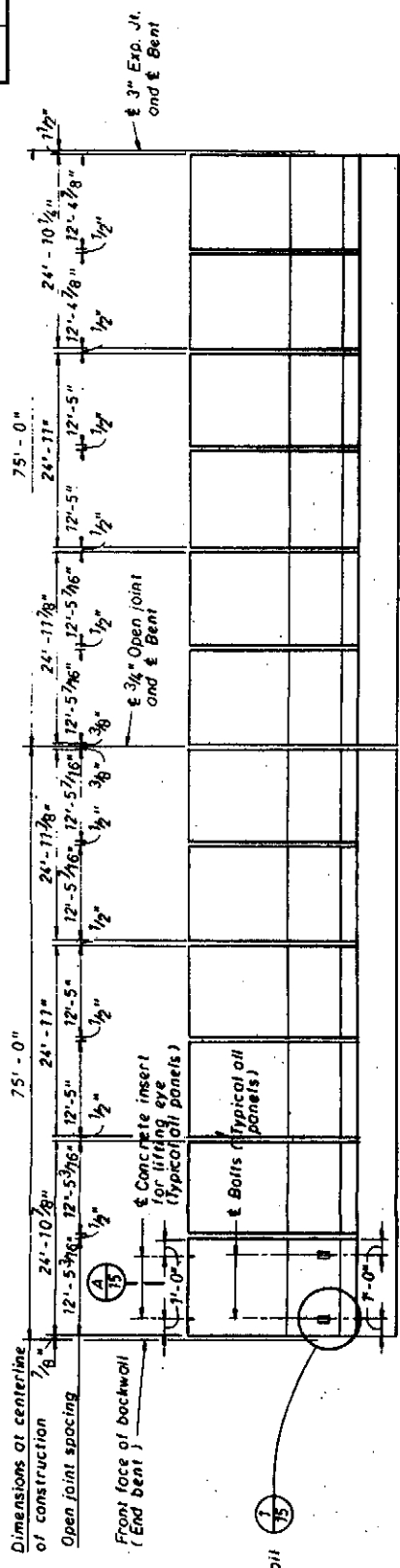
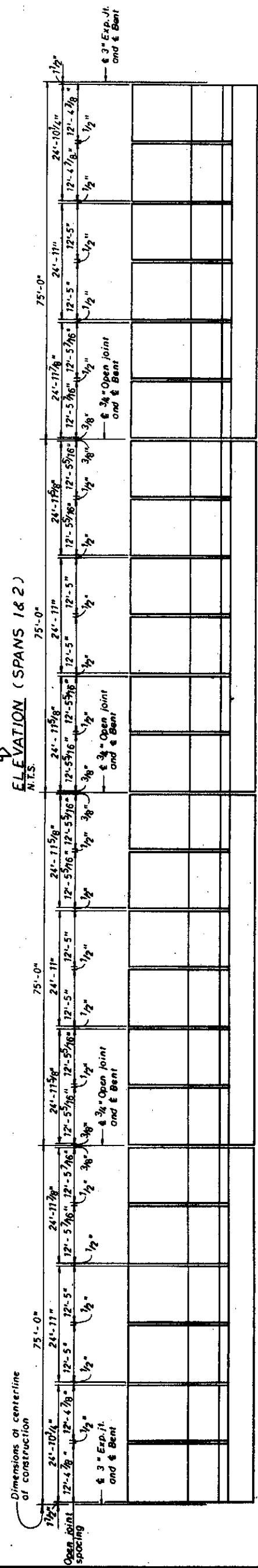


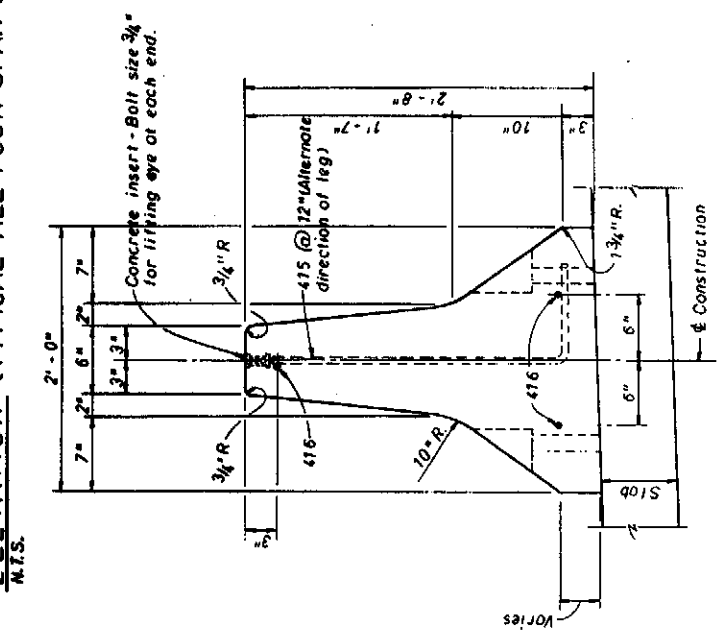
PROJECT NO.	DATE
3	11/11/78



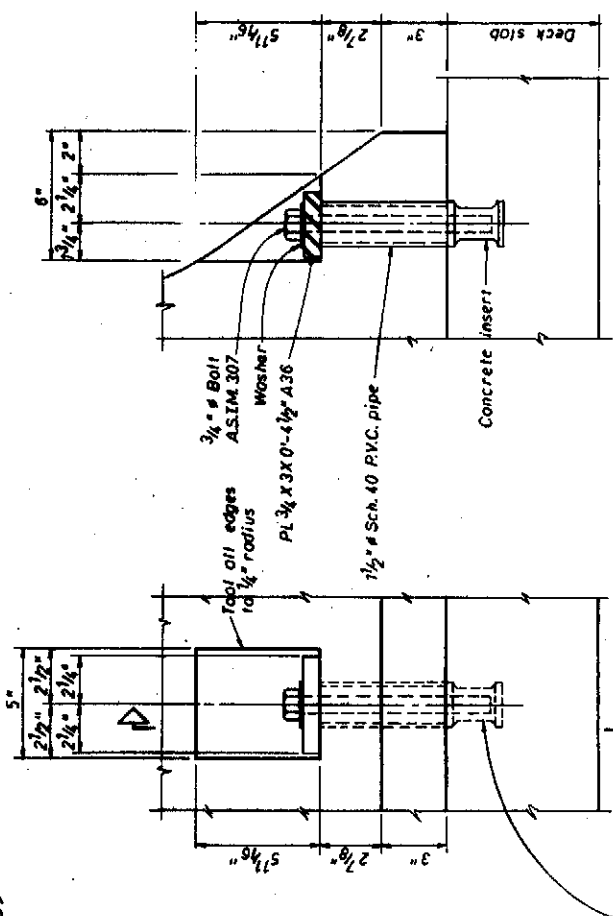
ELEVATION (SPANS 1 & 2)
N.T.S.



ELEVATION (TYPICAL ALL FOUR SPAN UNITS)
N.T.S.



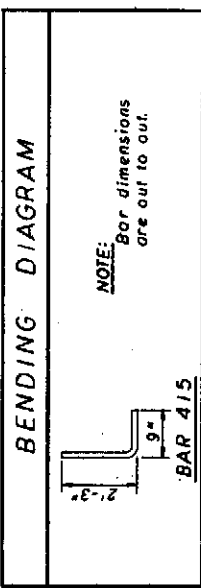
SECTION A-A
1 1/2" x 7'-0"



SECTION B-B
3" x 7'-0"

1. Concrete Insert - Bolt size $\frac{3}{4}$ " minimum ultimate load 12,000 lbs.
2. Drilled Anchor Alternate - Bolt size $\frac{3}{4}$ " minimum ultimate load 12,000 lbs.

BOLT DETAIL
3" x 7'-0"



BENDING DIAGRAM

NOTE: Bar dimensions are out to out.

GENERAL NOTES

- CONCRETE: CLASS II CONCRETE SHALL BE USED IN MEDIUM BARRIER. THE CYLINDER STRENGTH OF THE CONCRETE SHALL BE 3,400 P.S.I., MINIMUM AT 28 DAYS.
- REINFORCING STEEL: REINFORCING STEEL SHALL BE GRADE 60 (EPOXY COATED)
- PAYMENT: MEDIUM BARRIER SHALL BE PAID FOR PER LINEAR FOOT, WHICH SHALL INCLUDE ALL CONCRETE AND REINFORCING STEEL, INSERTS, BOLTS, AND ACCESSORIES. MEDIUM BARRIER SHALL BE MEASURED ALONG THE CENTERLINE OF CONSTRUCTION.
- GALVANIZING: ALL METAL PARTS EXCEPT REINFORCING STEEL SHALL BE HOT DIPPED GALVANIZED ACCORDING TO A.S.T.M. SPECIFICATIONS A-123.
- BOND: MEDIUM BARRIER MAY BE CAST IN PLACE OR PRECAST AND SET IN PLACE ON A GROUT BED. IN EITHER CASE A SUITABLE BOND BREAKER IS REQUIRED BETWEEN BOTTOM OF BARRIER AND TOP OF DECK SLAB.