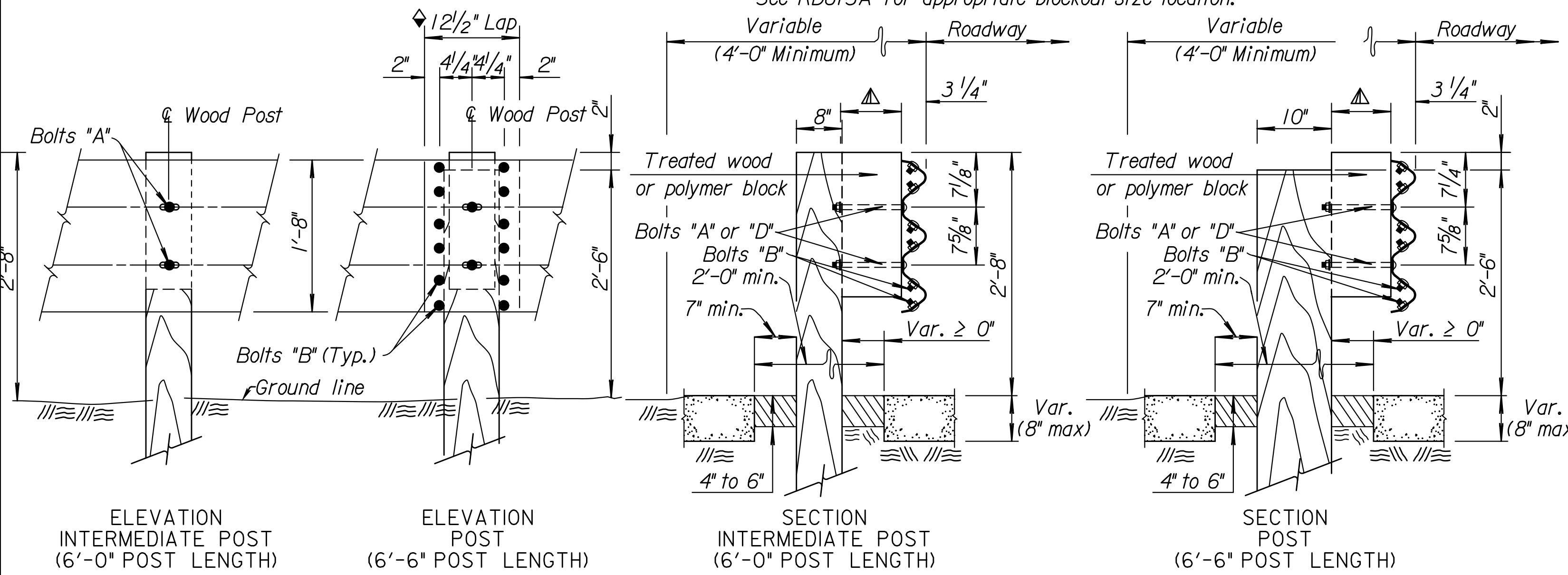


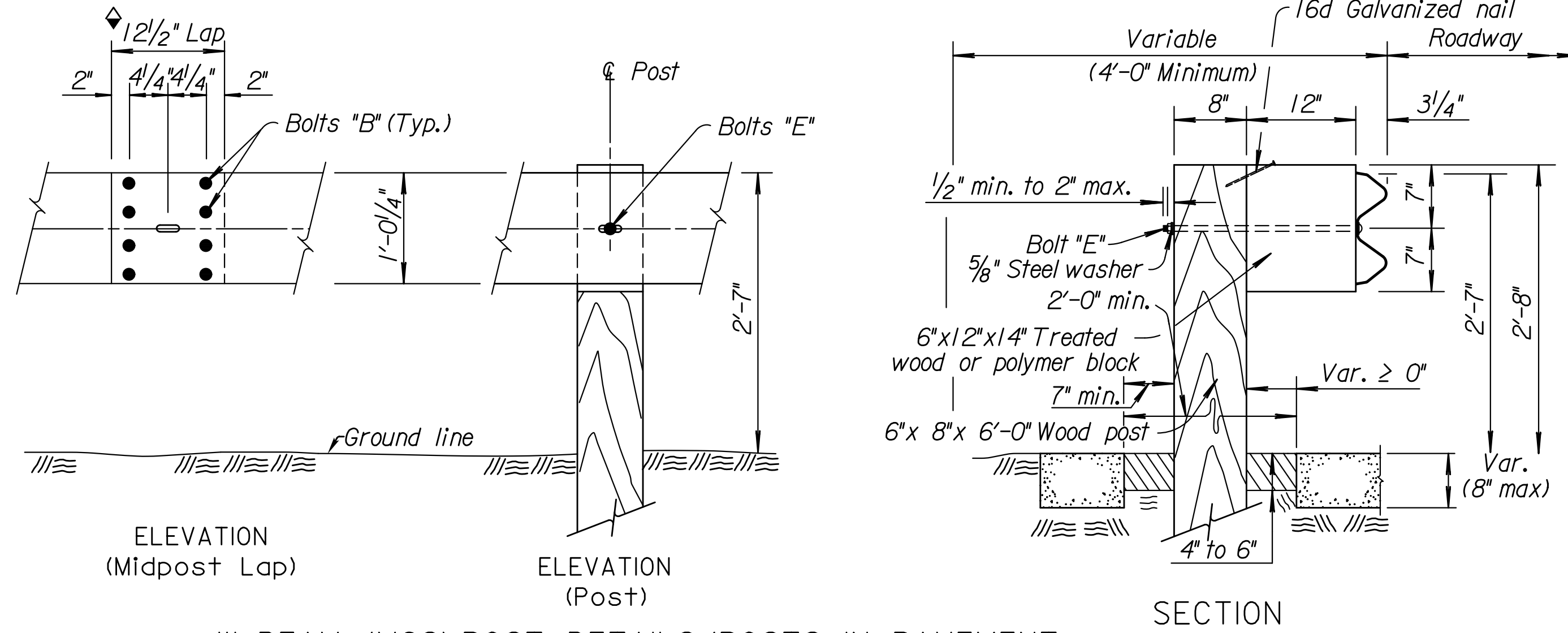
STATE	PROJECT NO.	YEAR	SHEET NO.	TOTAL SHEETS
KANSAS				

◆ Lap guardrail splices, including terminal connector, in the direction of traffic. Where traffic is temporarily carried in the opposite direction of final configuration, lap rail splices in the direction of permanent traffic.

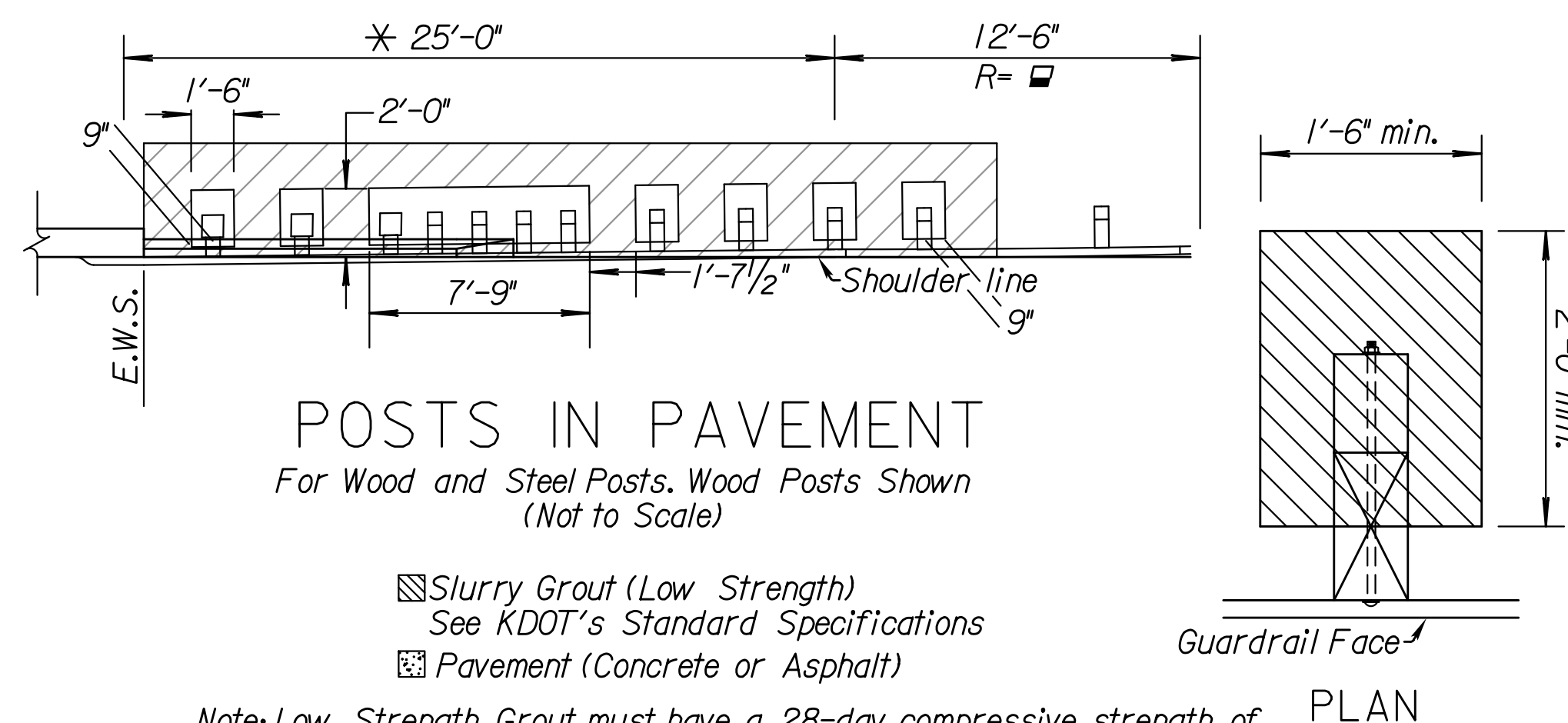
▲ See RD613A for appropriate blackout size location.



THRIE BEAM POST DETAILS/POSTS IN PAVEMENT

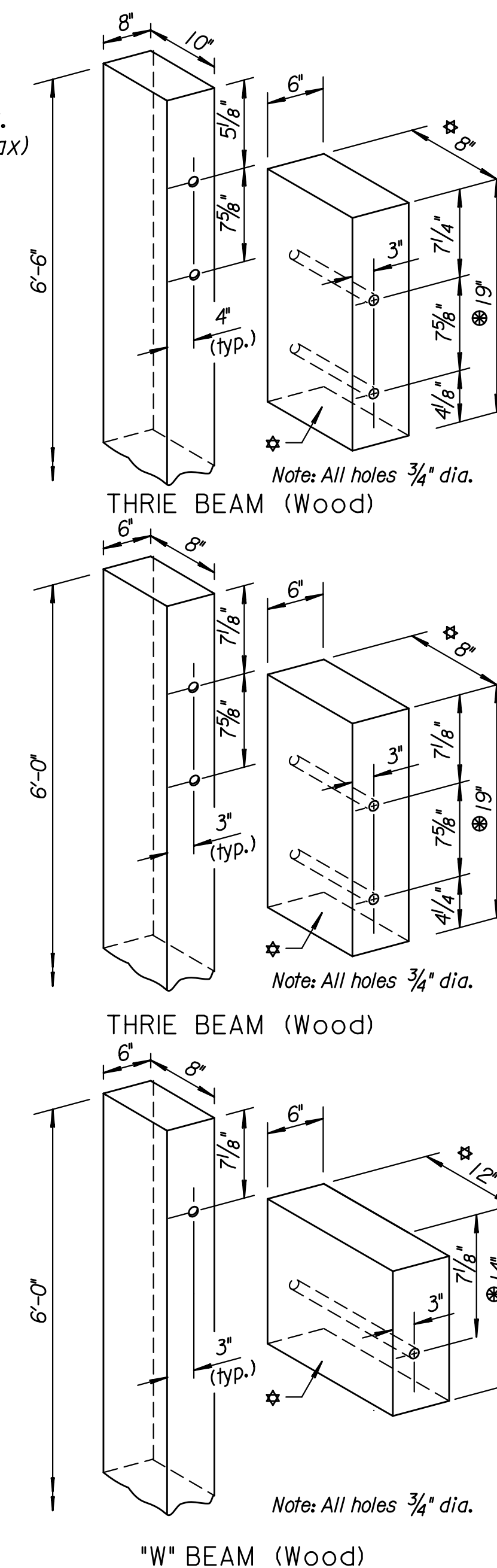


W-BEAM (MGS) POST DETAILS/POSTS IN PAVEMENT



Note: Low Strength Grout must have a 28-day compressive strength of 120 psi or less. All work and materials related to posts in pavement are subsidiary to other guardrail bid items.

- Slurry Grout (Low Strength) See KDOT's Standard Specifications
- Pavement (Concrete or Asphalt)



Note: All holes 3/4" dia.

Note: All holes 3/4" dia.

Note: All holes 3/4" dia.

GENERAL NOTES (Wood Posts)

Give all wood posts and wood blocks a preservative treatment, see standard specifications. Thoroughly saturate all cuts, injuries and bolt holes on wood posts and blocks with preservative. Use only one type of preservative treatment on a project.

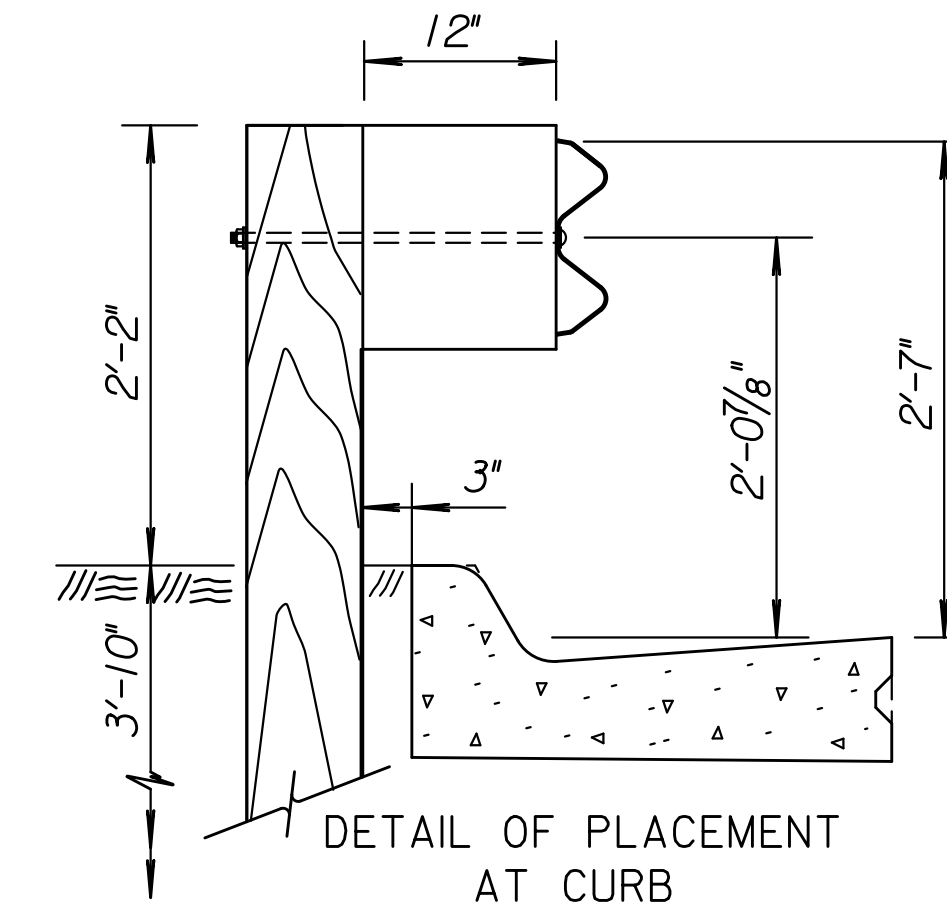
Set guardrail posts by digging or by driving. Use post caps to protect the post from crushing during driving operations.

Wood blockouts may be used through the 25'-0" thrie-beam section with wood or polymer blockouts used throughout the remainder of the guardrail end terminal may be independent from the remainder of the installation. For wood/polymer blockout requirements see standard specifications.

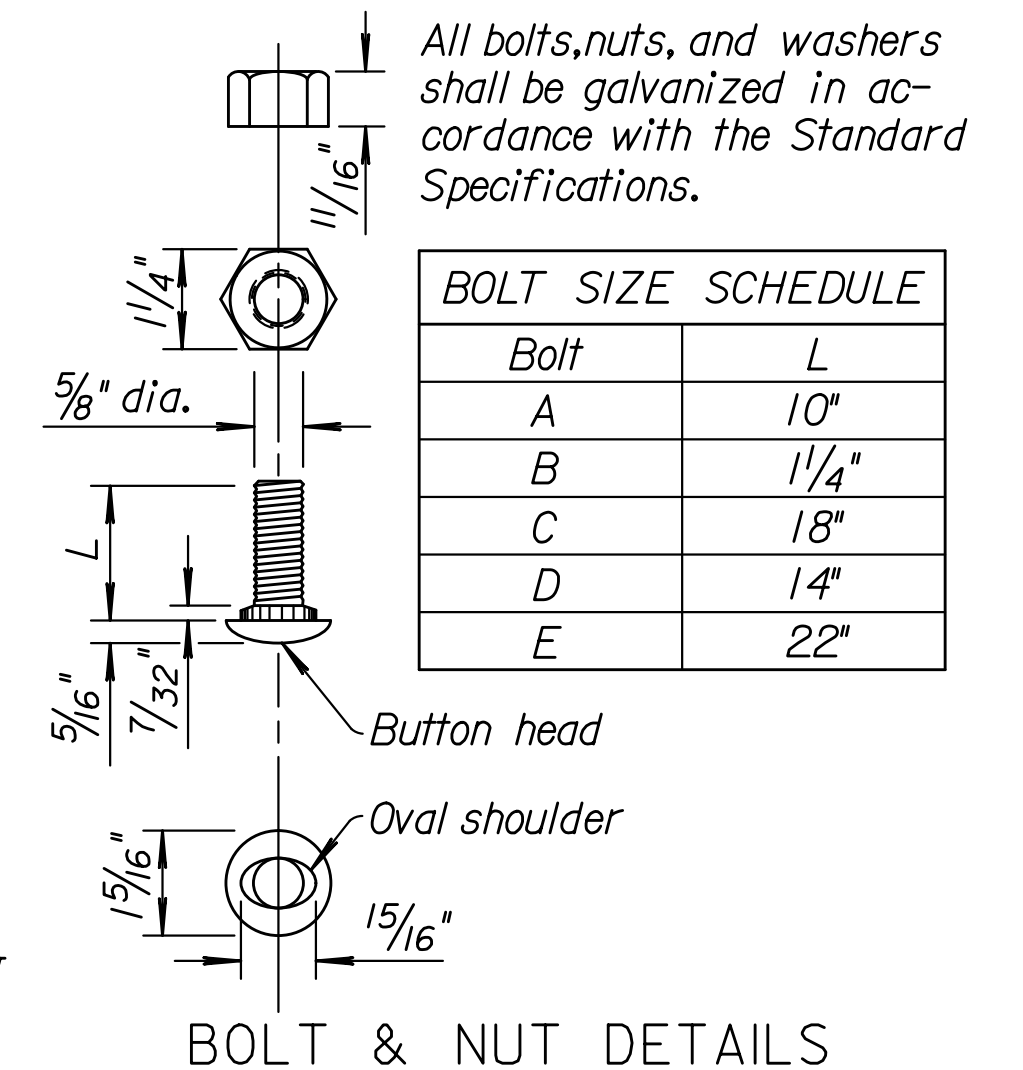
Use S4S rectangular posts/blockouts for Thrie Beam/W-Beam installation. See standard specifications for additional information.

Contractor must notify Engineer at the earliest time when a non-removable man-made object (footing, pipe, etc.) is encountered and prevents installation of a full length post.

All dimensions are nominal and are subject to manufacturing tolerances. Excavation including rock, shale, and other materials for erection of Guardrail is subsidiary to various bid items for which payment is made.



Note: Measure height of rail from the pavement surface at the curb/pavement joint as shown. A special design is needed when guardrail is not located as detailed. A Type II (laydown) curb & gutter is preferred when guardrail is adjacent to curb.



BOLT SIZE SCHEDULE	
Bolt	L
A	10"
B	1 1/4"
C	18"
D	14"
E	22"

NO.	DATE	REVISIONS	BY	APP'D
4	9-24-15	Initial Release	T.T.R.	S.W.K.

KANSAS DEPARTMENT OF TRANSPORTATION

**GUARDRAIL POST (WOOD)
(MGS) DETAILS**

RD611B

DESIGNED	QUANTITIES	APP'D. James O. Brewer
DESIGN CK.	DETAIL CK.	TRACED Bowser
		TRACE CK. King

KDOT Graphics Certified 09-29-2015

Notes to Designer: For posts installed in pavement thicker than 8" or posts installed in rock formations refer to AASHTO's Roadside Design Guide for details then revise this drawing and all supporting drawings appropriately.

Plotted : 29-SEP-2015 15:59

Drawn By : ttrroads
File : rd611b.dgn

KDOT Graphics Certified