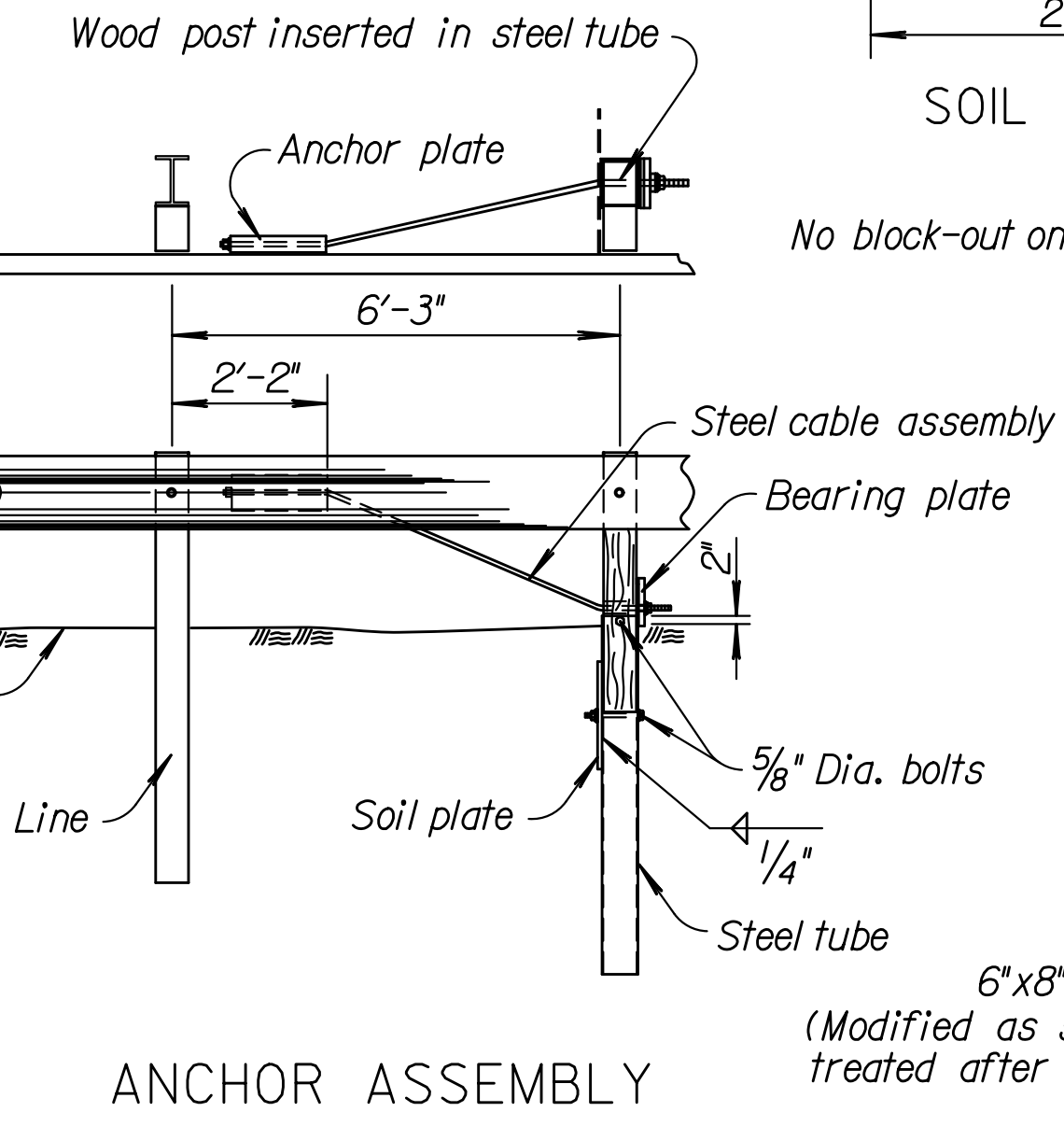
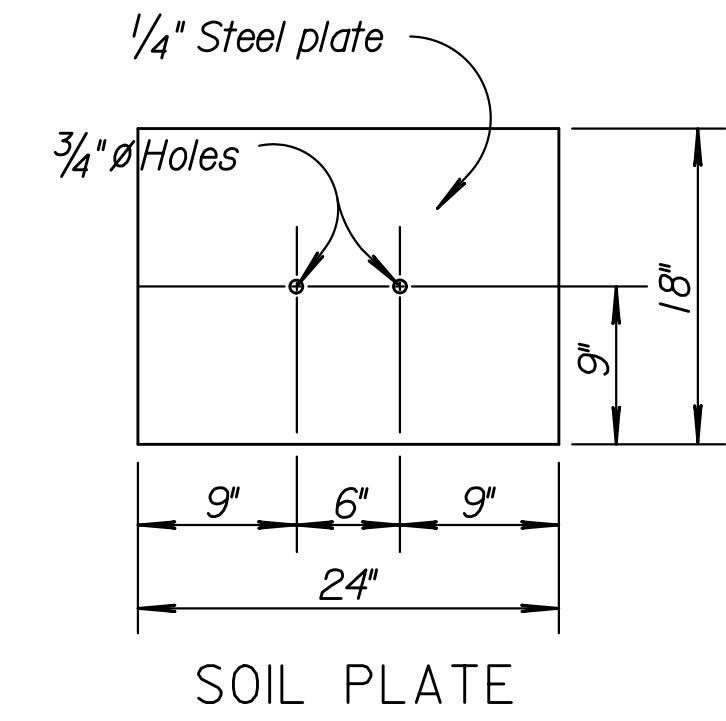


L	R	Required Area Free of Fixed Objects
12.50	7.96	25 X 15
18.75	11.94	25 X 15
25.00	15.92	30 X 15
31.25	19.89	30 X 15
37.50	23.87	40 X 20
43.75	27.85	40 X 20
50.00	31.83	40 X 20
56.25	35.81	50 X 20
62.50	39.79	50 X 20

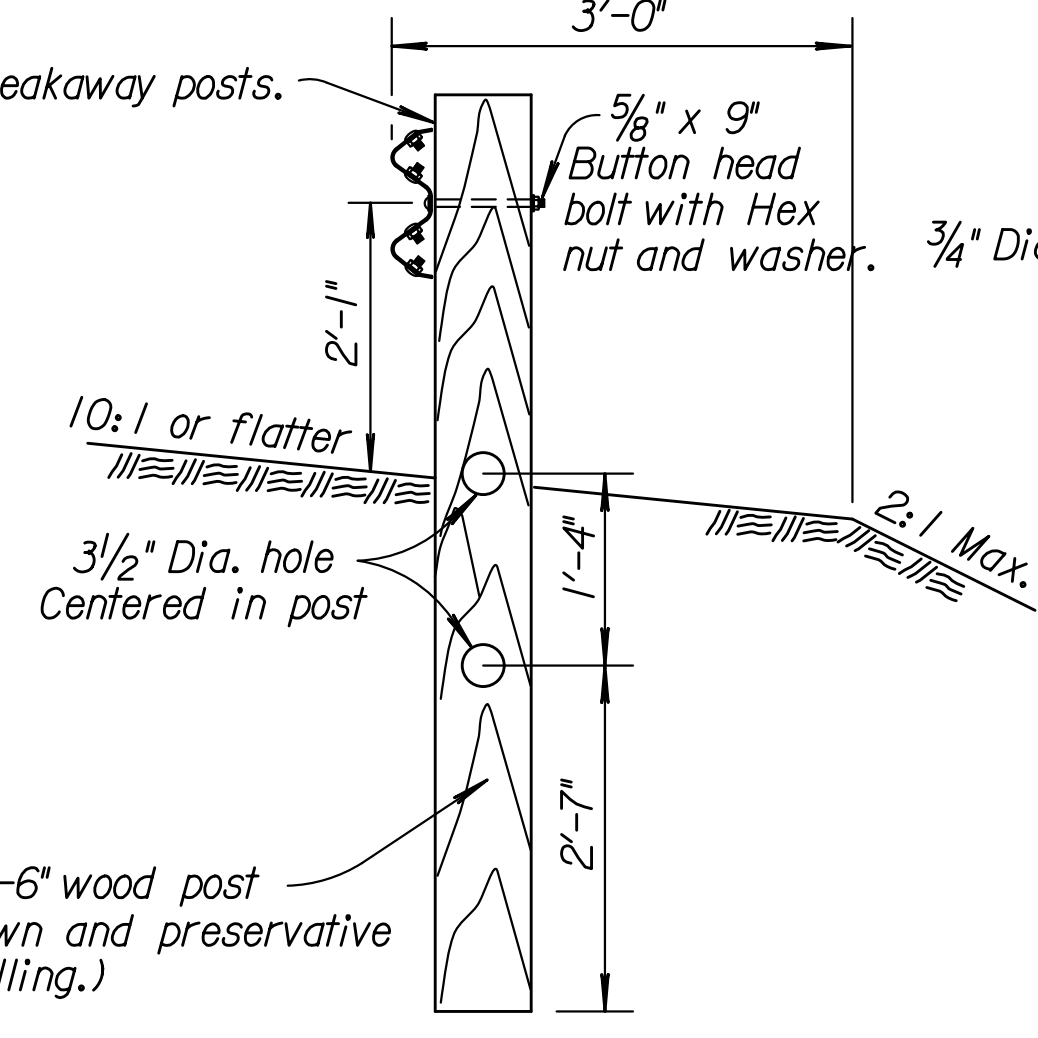
⊗ Crashworthy guardrail end terminal shown. See the guardrail layout sheets for additional details.
 ∅ Variable length must be in multiple of 6'-3". Length required is based on length of need for approach sideroad traffic. See guardrail layout for details.



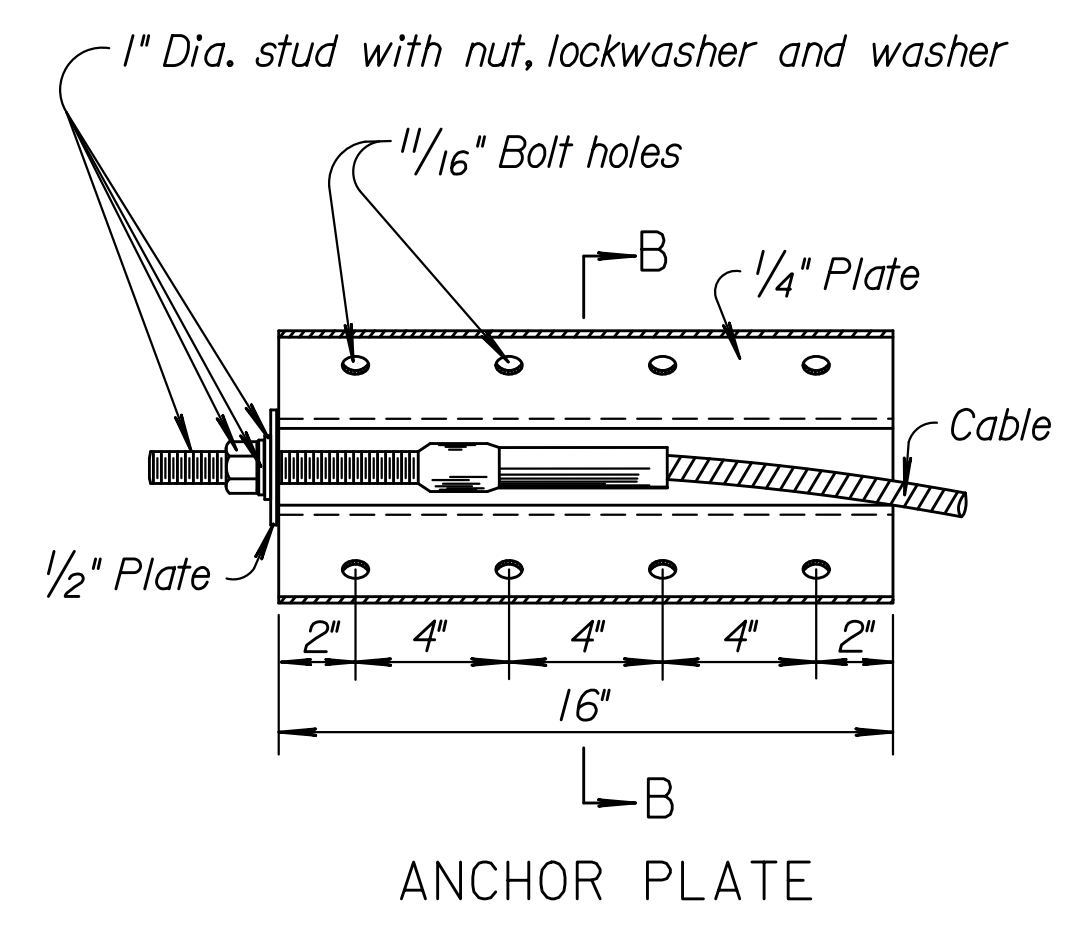
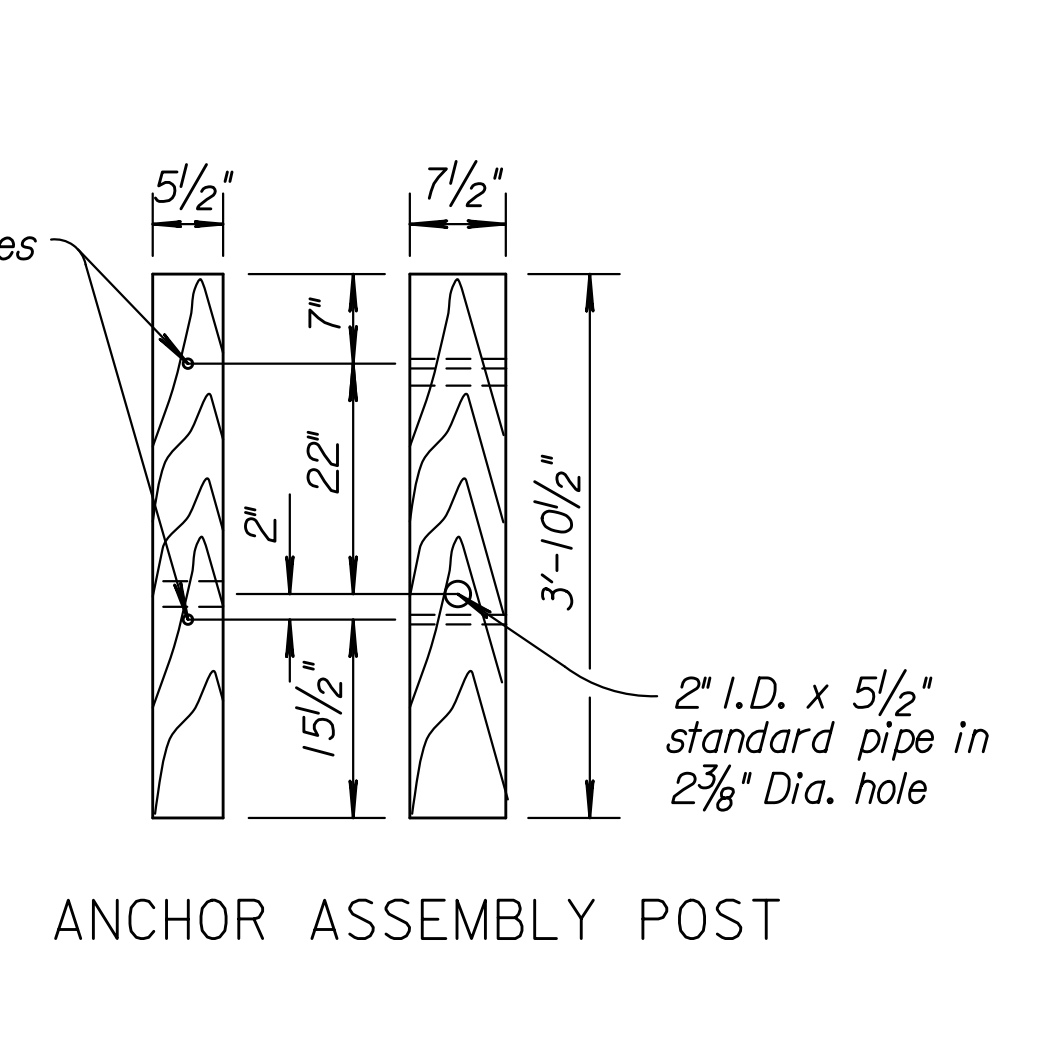
ANCHOR ASSEMBLY



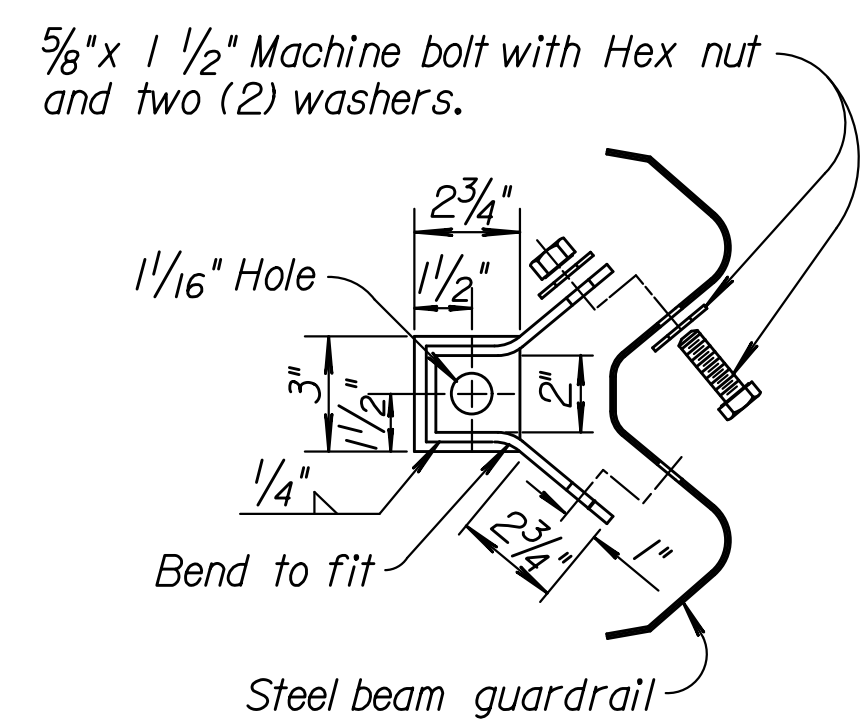
GENERAL NOTES
 The curved rail element is 12 ga, and shop bent.
 See Standard Drawing RD611A, RD611B, and RD613A for guardrail details not shown on this sheet.
 See Standard Drawing RD618A for details of MGS-Type II End Terminal. Use wood Breakaway Posts through curved section of guardrail, all other posts may be either wood or steel (shown) with no mixing of types.
 Set steel tube and soil plate in place prior to the installation of the wood anchor assembly post.
 Use MGS-Type II Terminal at entrances or locations where end-on impacts with the terminal are not considered likely to occur.
 Use a crashworthy end terminal at sideroad and ramp locations and appropriate length of guardrail to satisfy length of need requirements.



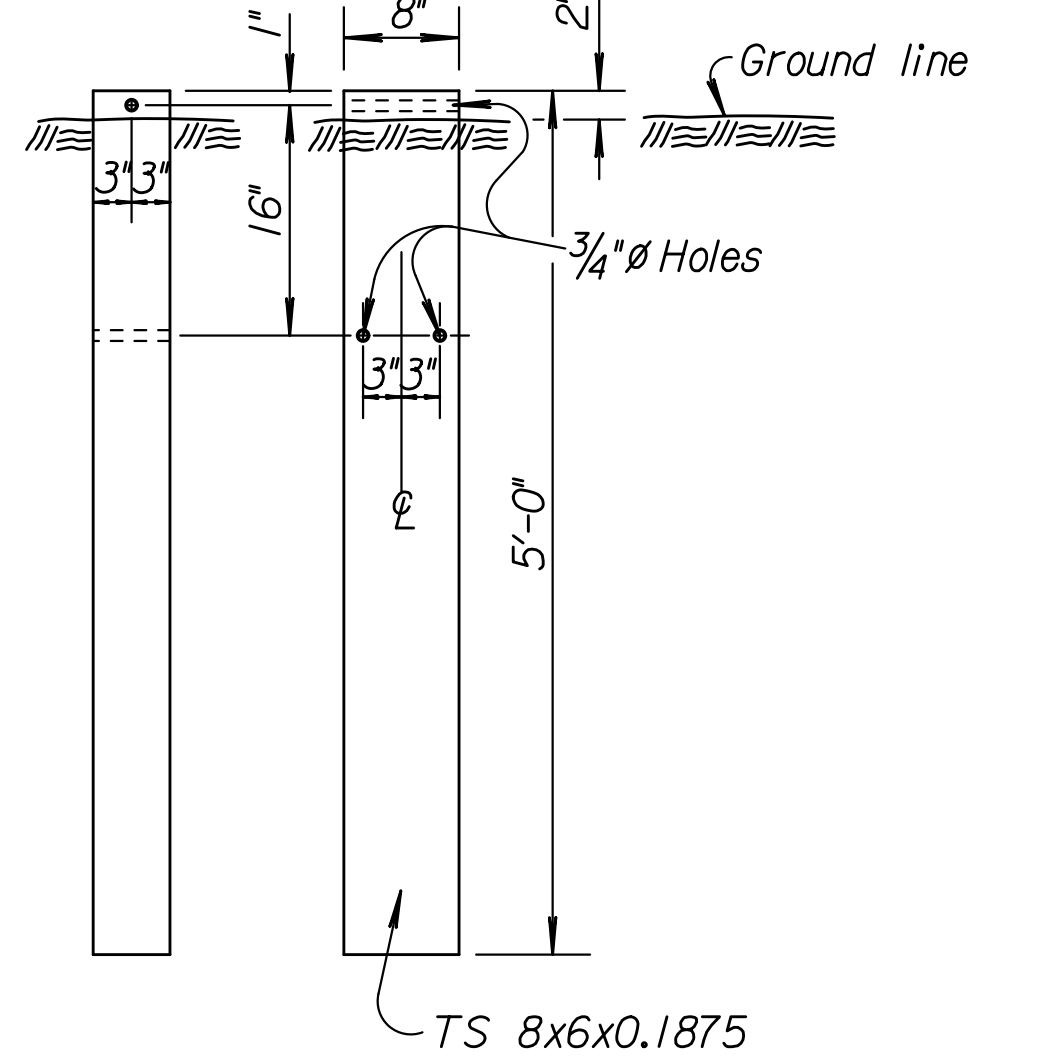
SECTION A-A
 (Typical through curved portion of guardrail.)



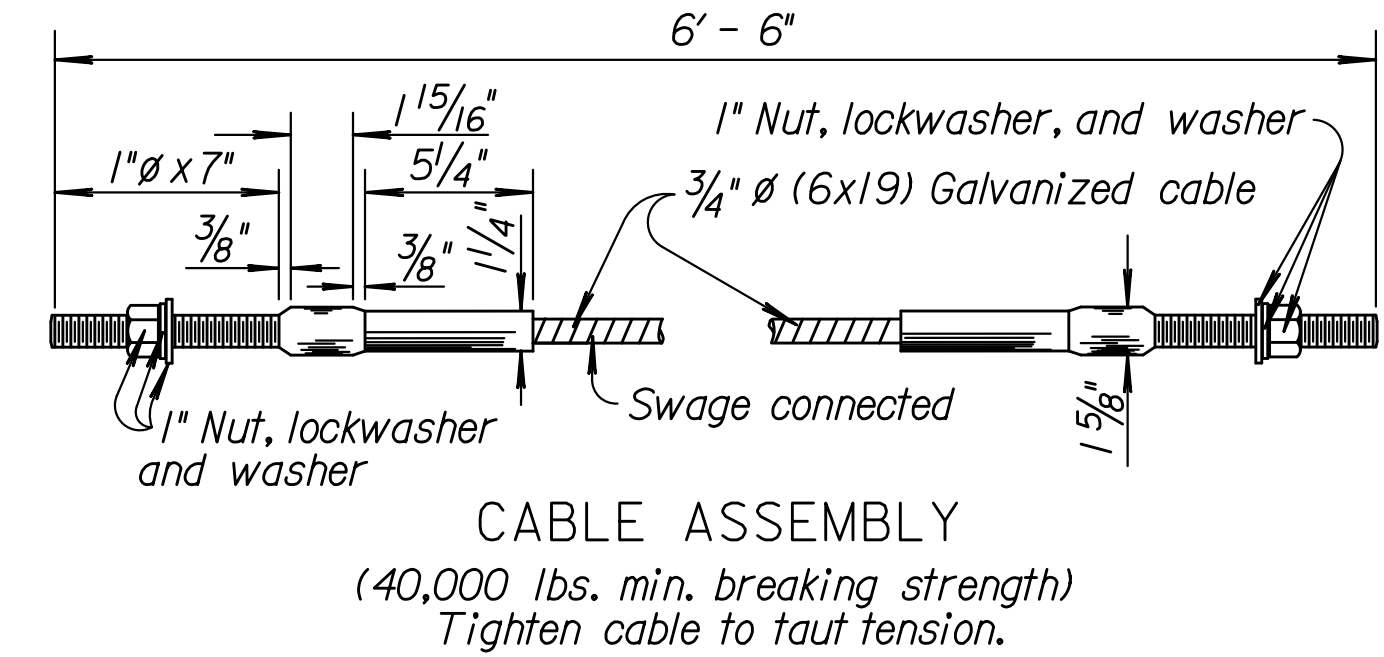
ANCHOR PLATE



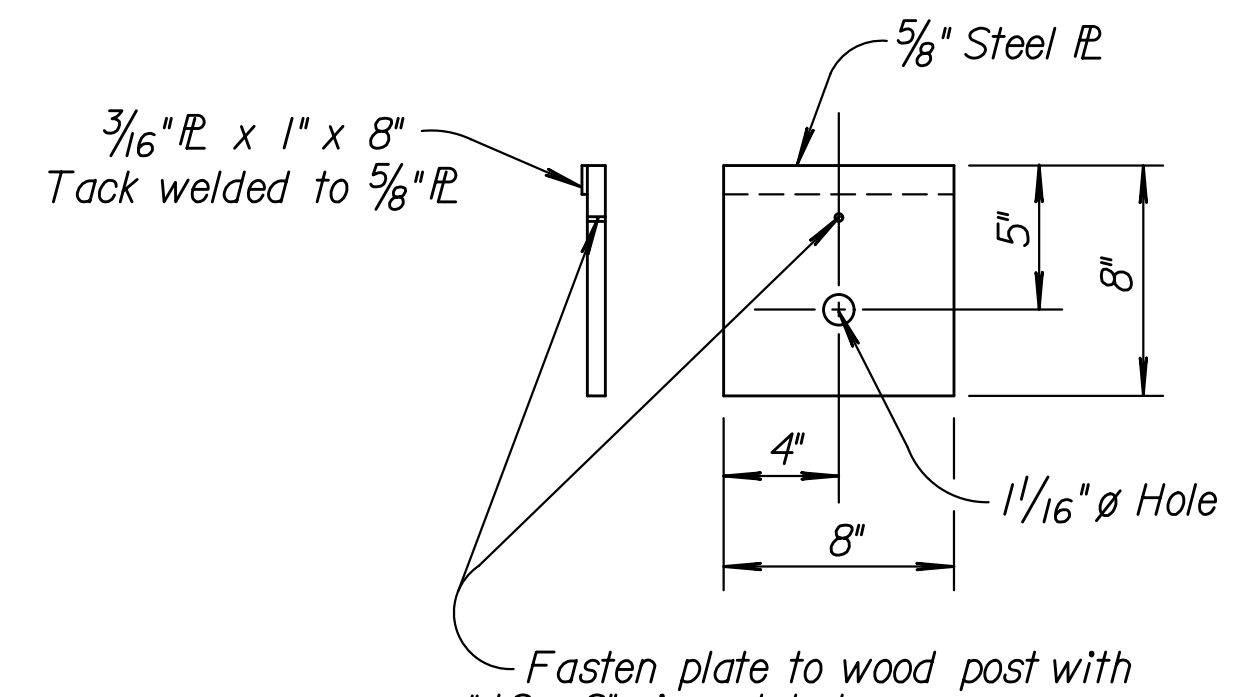
MODIFIED SECTION B-B



STEEL TUBE



CABLE ASSEMBLY
 (40,000 lbs. min. breaking strength)
 Tighten cable to taut tension.



BEARING PLATE

DESIGNED	TRACED	QUANTITIES	BY	T.T.R.	S.W.K.
DATE	REVISIONS	QUAN.CK.	APP'D		
9-24-15			James O. Brewer		

KANSAS DEPARTMENT OF TRANSPORTATION
 DETAILS FOR GUARDRAIL AT INTERSECTING ROADWAY
 31 INCH MOUNTING HEIGHT
 RD619A
 FHWA APPROVAL
 DESIGN CK. DETAIL CK. QUAN. CK. TRACE CK. King