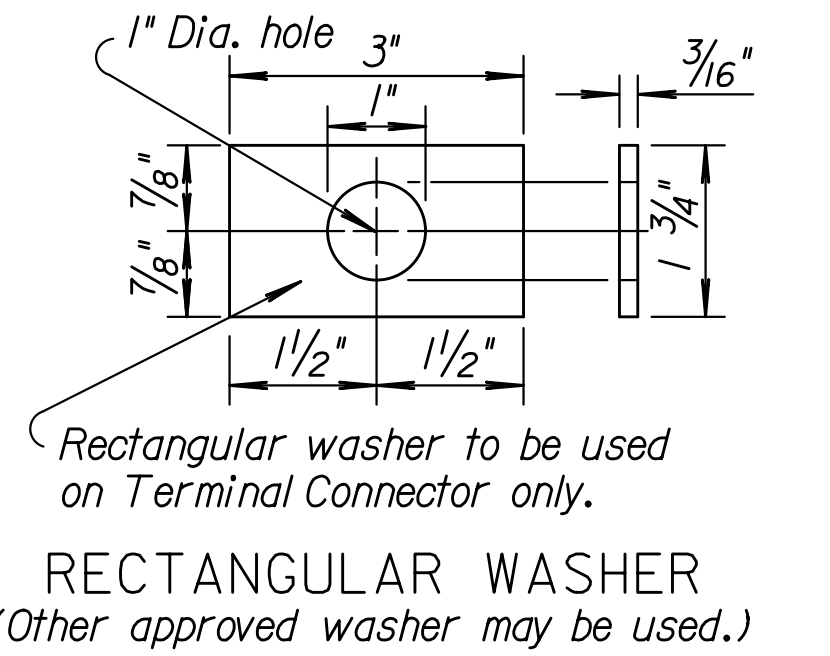
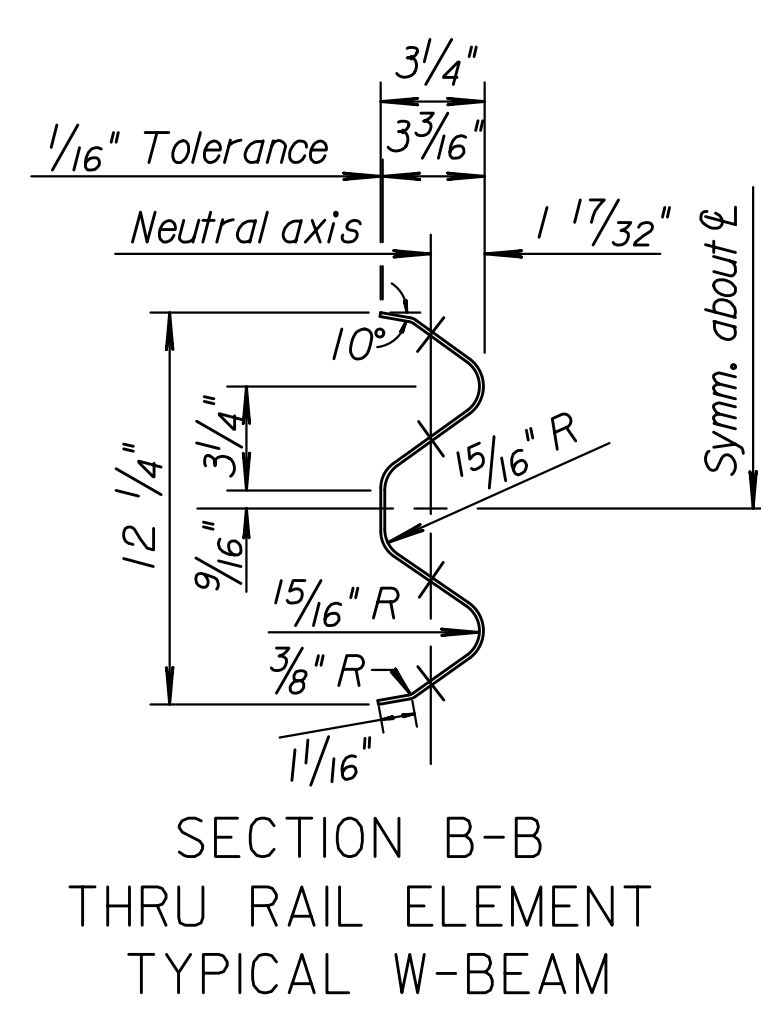
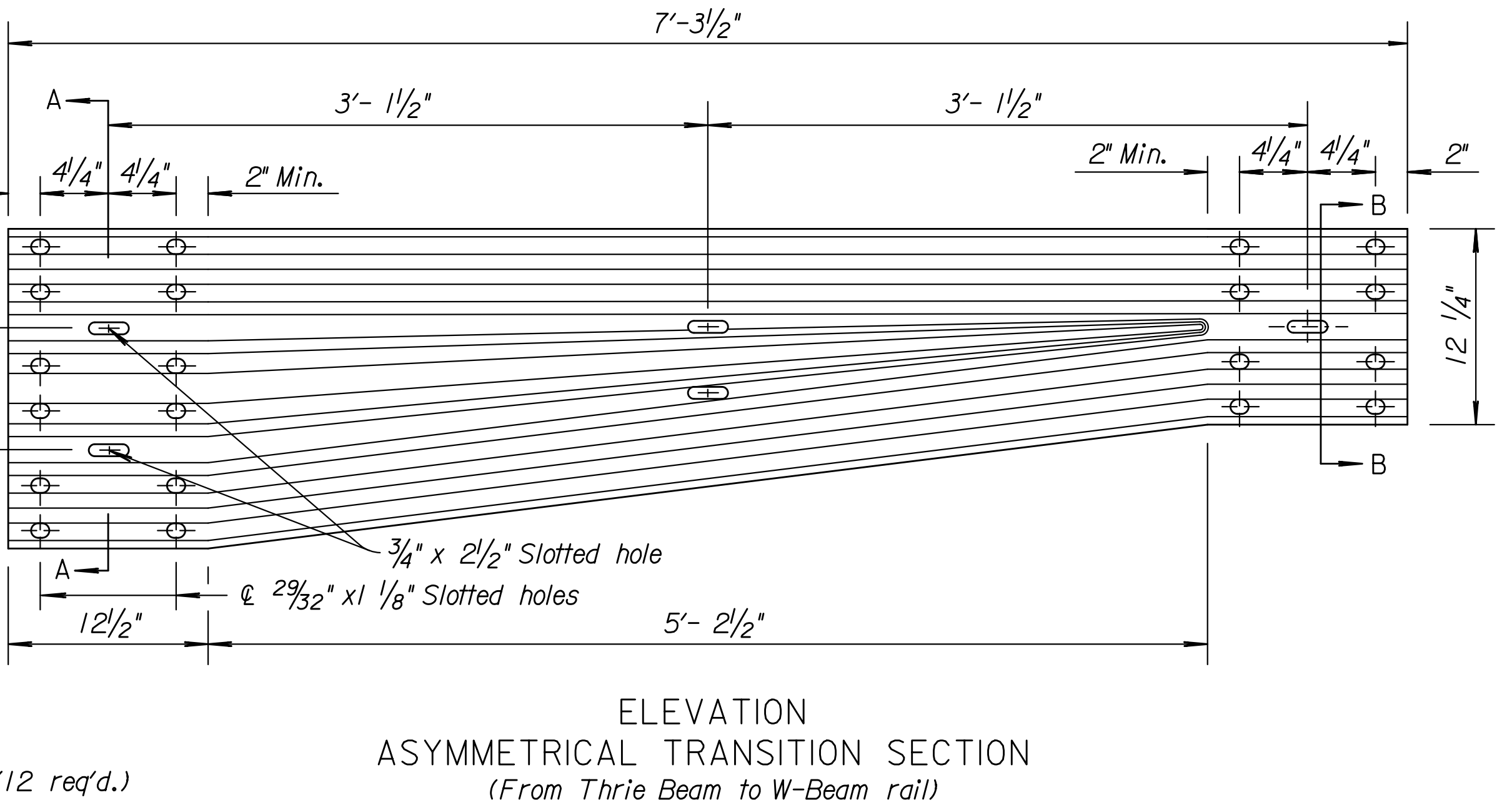
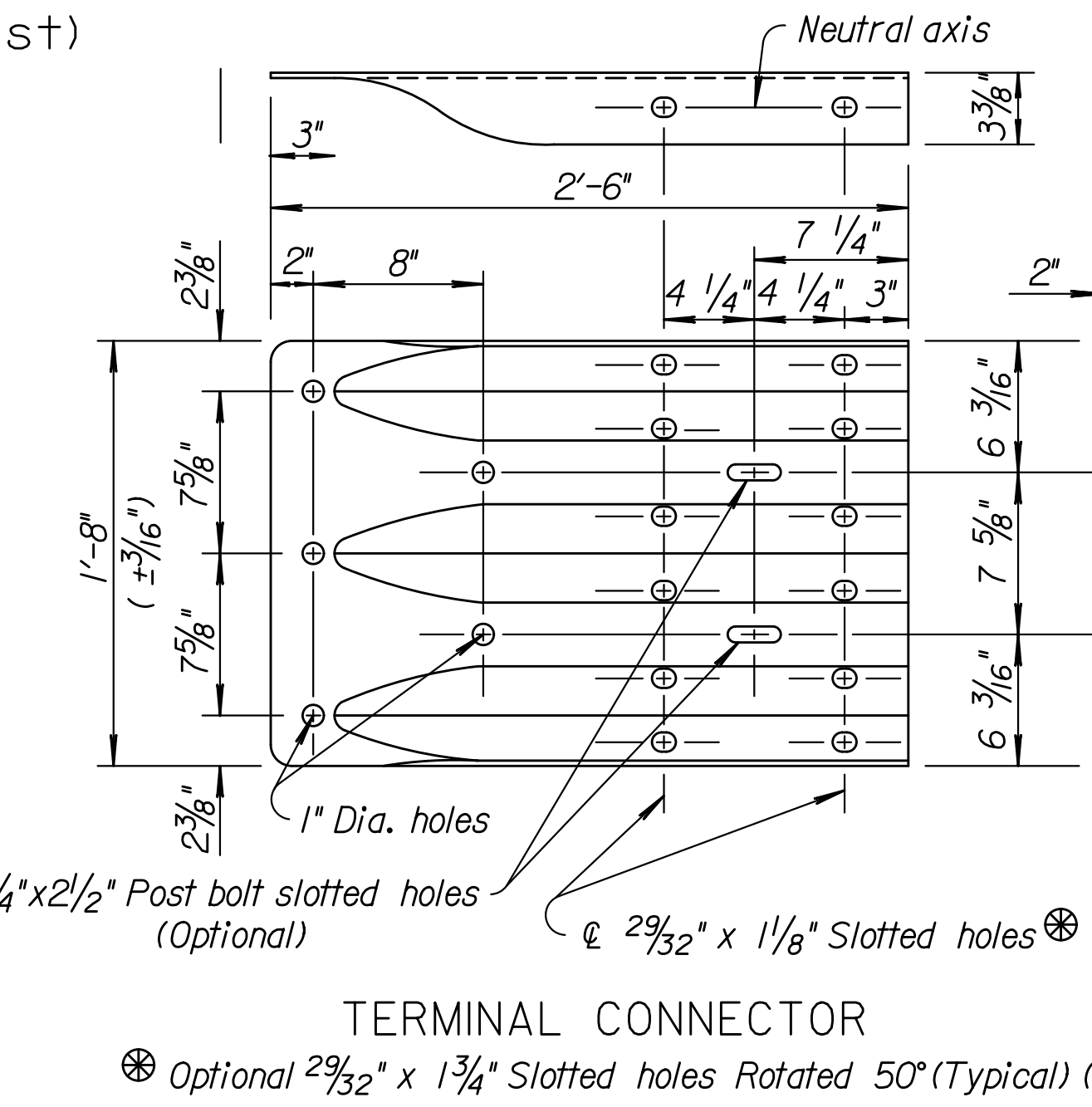
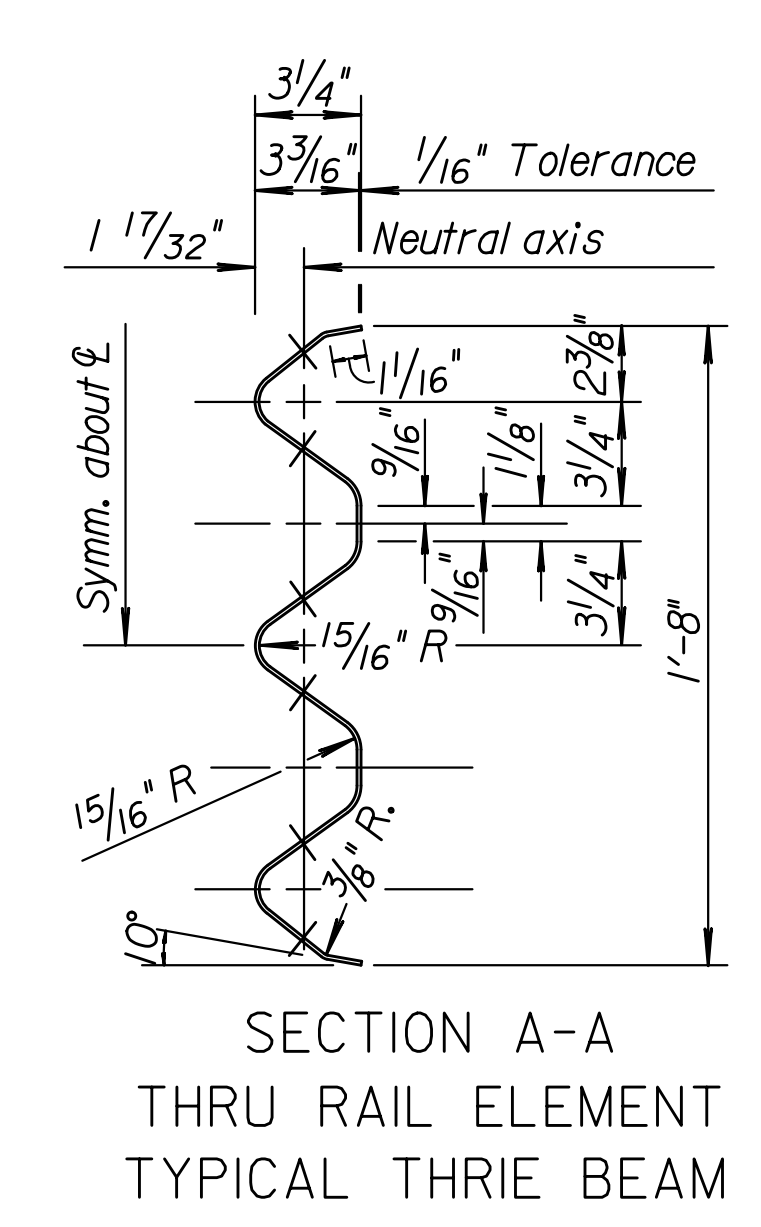
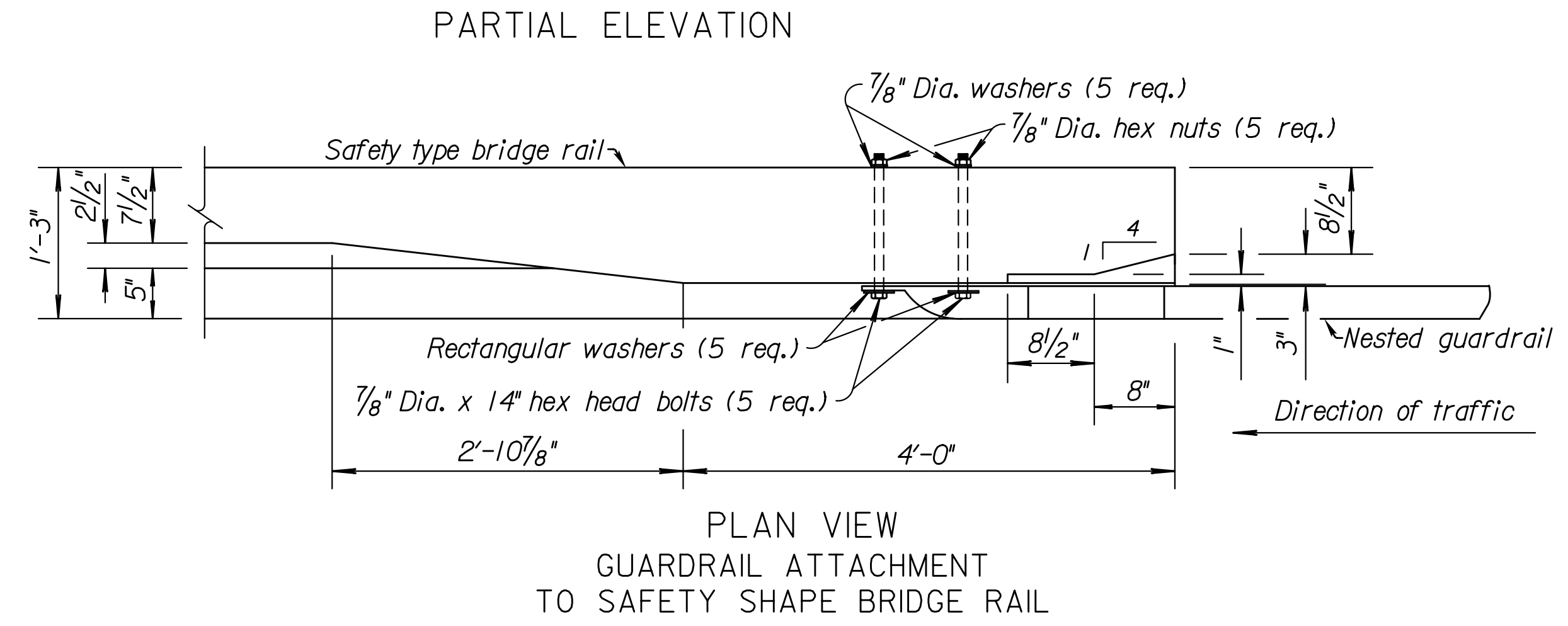
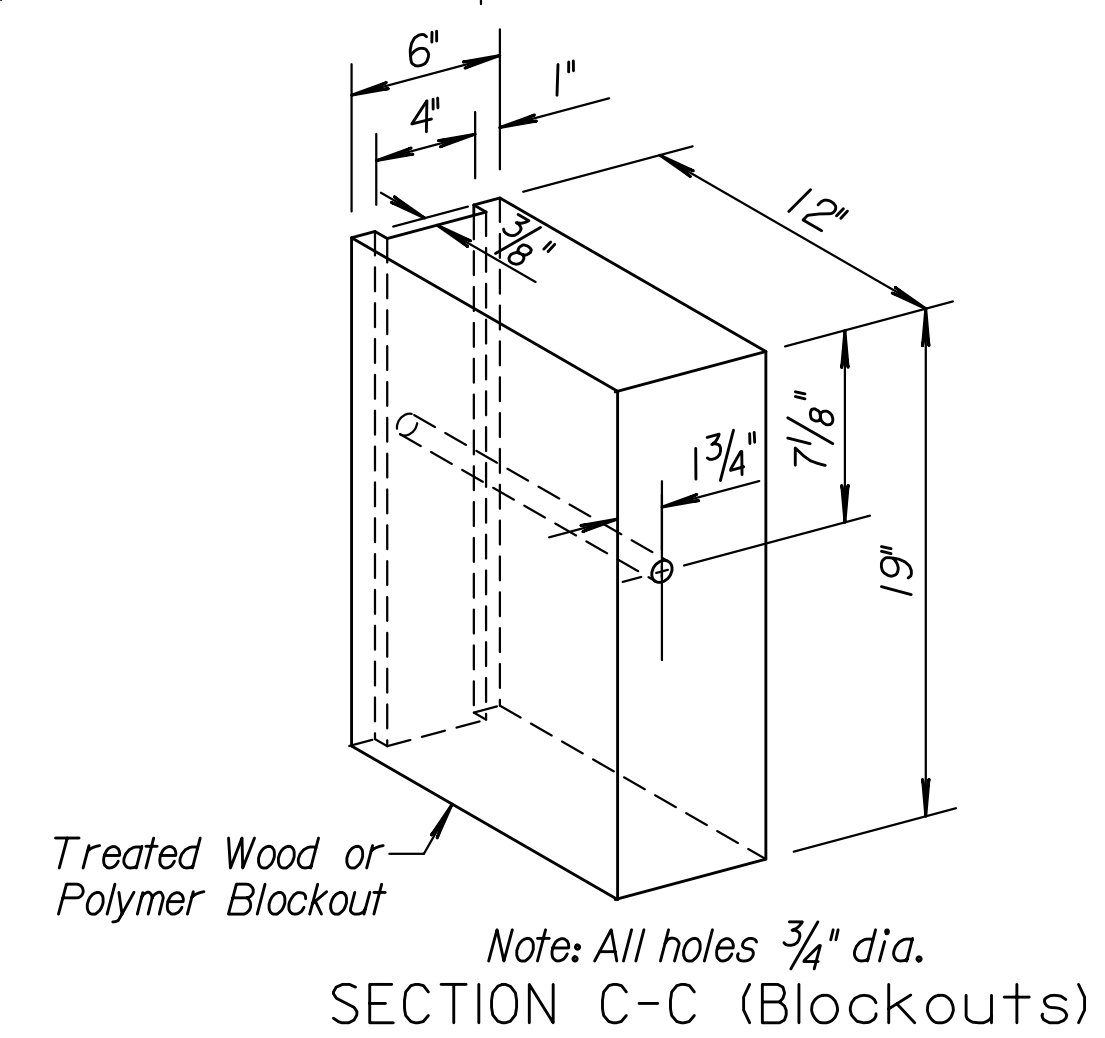
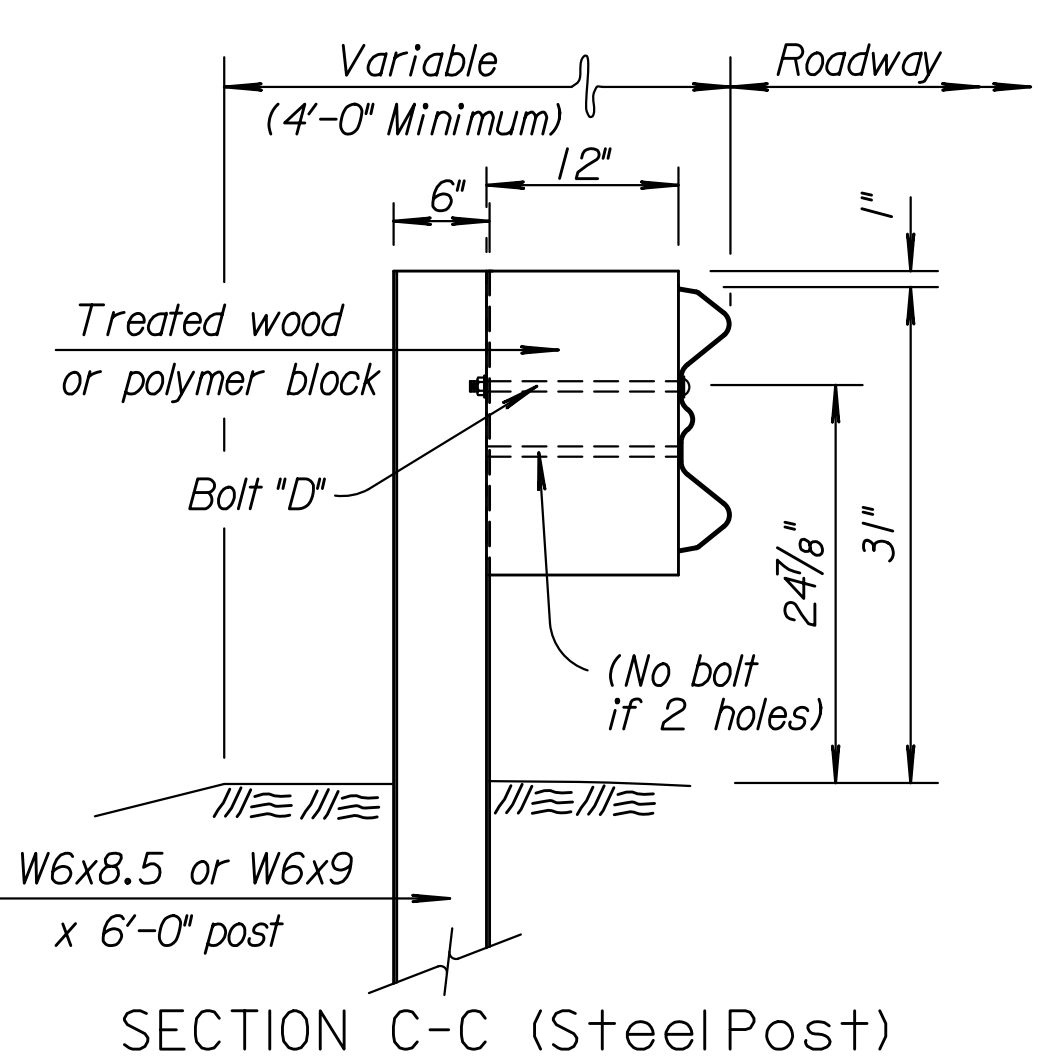
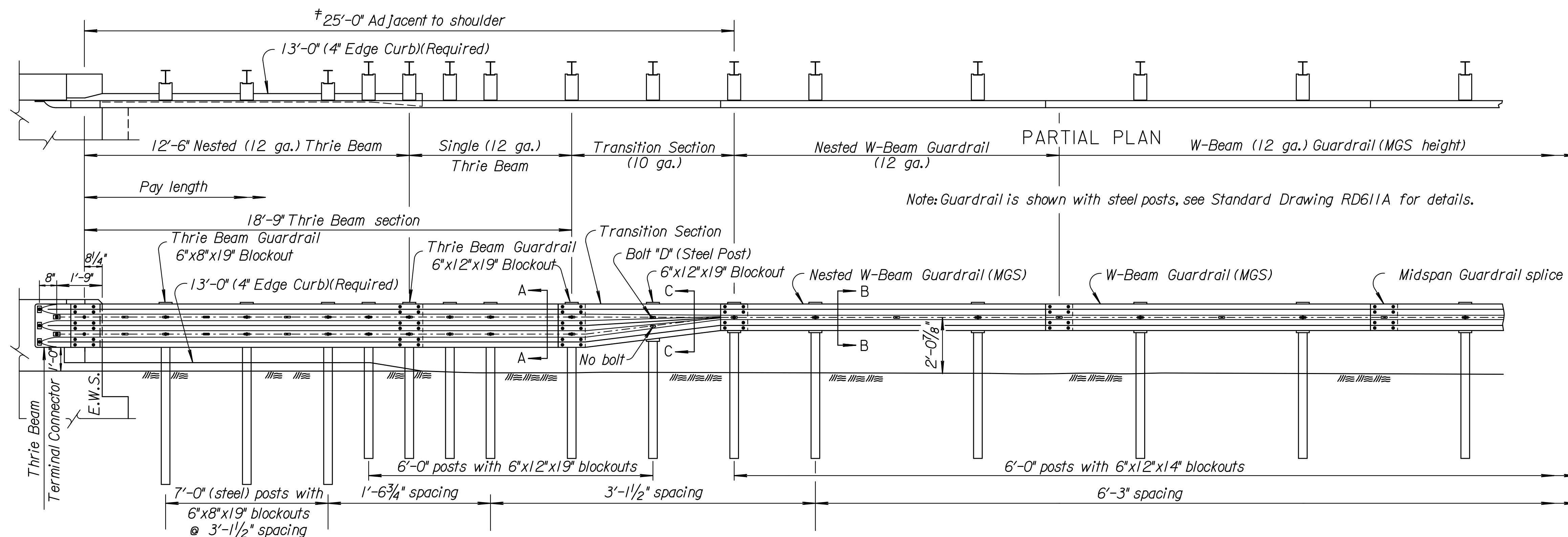


STATE	PROJECT NO.	YEAR	SHEET NO.	TOTAL SHEETS
KANSAS				

GENERAL NOTE
 Use galvanized 12 gauge steel rail elements unless otherwise noted.
 Use galvanized anchor bolts and post rail fittings, see Standard Specifications. Supply guardrail parts that are interchangeable with similar parts regardless of source or manufacturer.
 Use approved steel (shown) or wood posts. See Standard Drawing RD611A, RD611B, and KDOT's Standard Specifications for details.
 † Wood blockouts may be used through the 25'-0" thrie-beam section with wood or polymer blockouts used throughout the remainder of the w-beam installation. The blockout size and material used in the guardrail end terminal may be independent from the remainder of the installation.
 Fabricate Terminal Connector from 10 gauge steel, see Standard Specification. The connector has the same section as thrie beam guardrail. Terminal connector is subsidiary to the bid item "Guardrail, Steel Plate".
 Shop curve rails when radius is less than 150'.
 Lap guardrail splices, including terminal connector, in the direction of traffic. Where traffic is temporarily carried in the opposite direction of final configuration, lap rail splices in the direction of permanent traffic.
 Bridge to guardrail transition consists of 1- 18'-9" thrie-beam with 1- 12'-6" thrie-beam section nested in back of 18'-9" section (See Layout), 1- Thrie beam to W-beam Asymmetrical transition section, use associated hardware with post sizes and location shown. For the remainder of installation use (MGS) W-beam guardrail with only one post type used within (MGS) guardrail run.
 All material and work required for this construction are included in the bid item "Guardrail, Steel Plate".



NO.	DATE	REVISIONS	BY	APP'D
3	9-24-15	Add Wood Post Opt., Mix Blocks	T.T.R.	S.W.K.
2	1-25-12	Revised Details, Thrie-Beam	S.W.K.	J.O.B.
1	1-25-12	Revised Details, Thrie-Beam	S.W.K.	J.O.B.

KANSAS DEPARTMENT OF TRANSPORTATION

DETAILS OF THRIE BEAM to (MGS) GUARDRAIL TRANSITION

RD613A

DESIGNED	QUANTITIES	APP'D. James O. Brewer
DESIGN CK.	DETAIL CK.	TRACED Bowser
		TRACE CK. King

KDOT Graphics Certified 09-28-2015

Plotted : 28-SEP-2015 11:43
 Drawn By : tfrroads
 File : rd613a.dgn

KDOT Graphics Certified