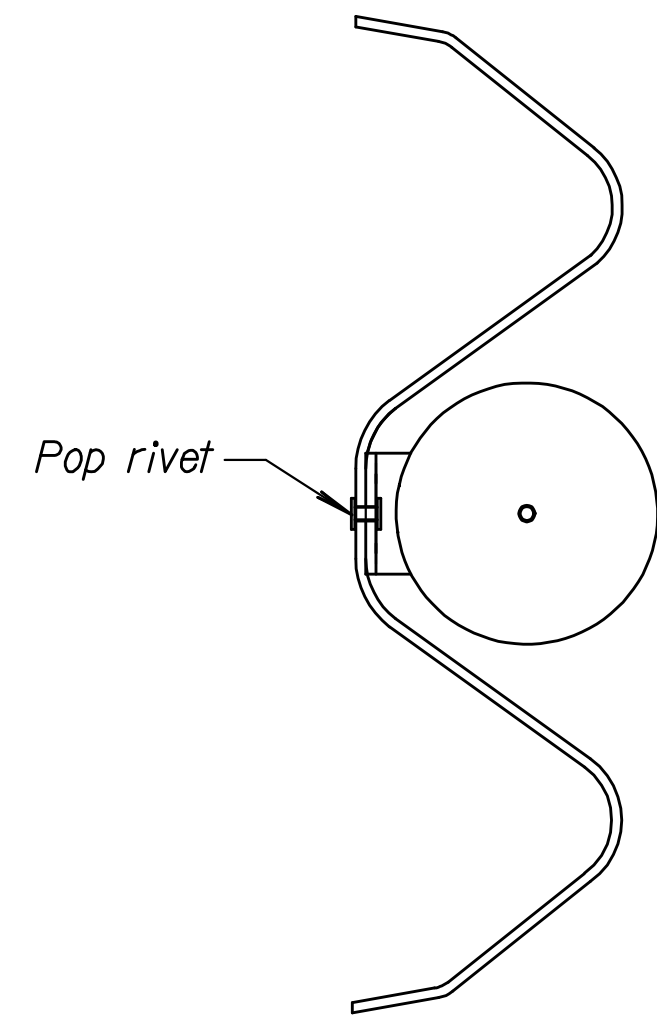
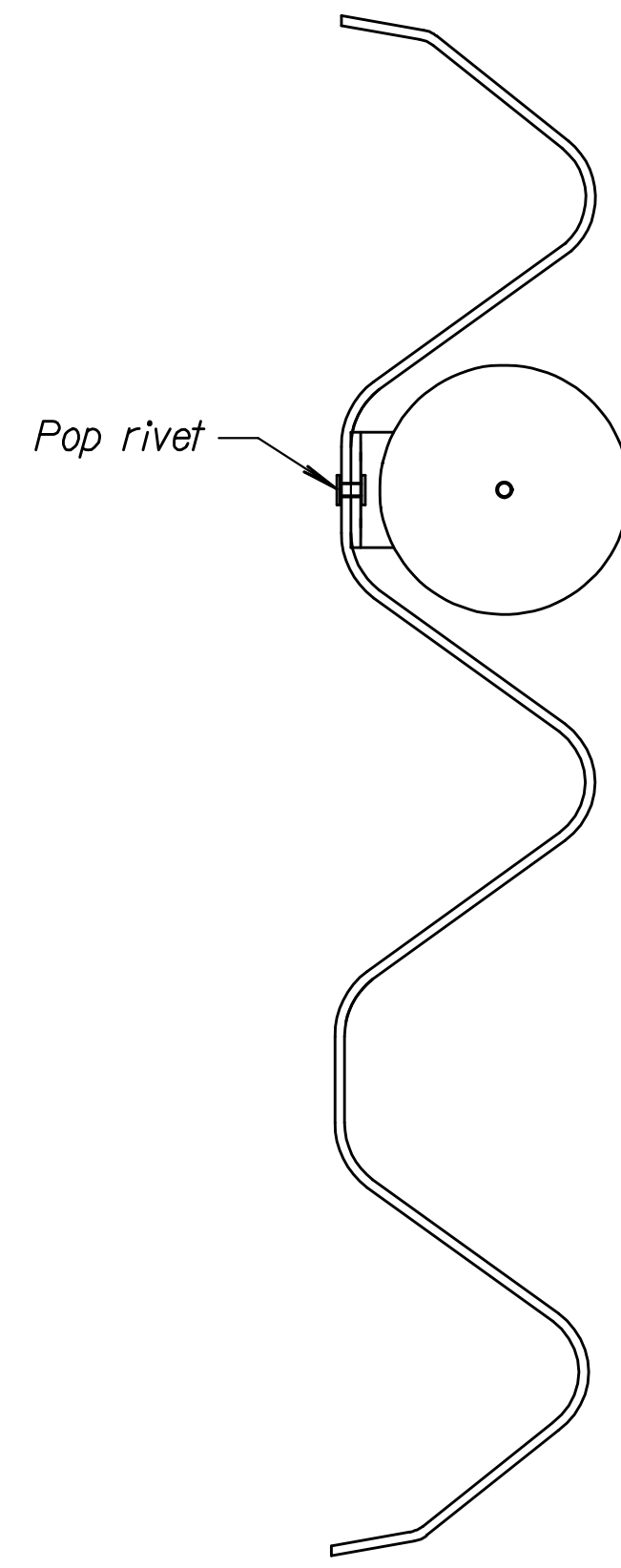


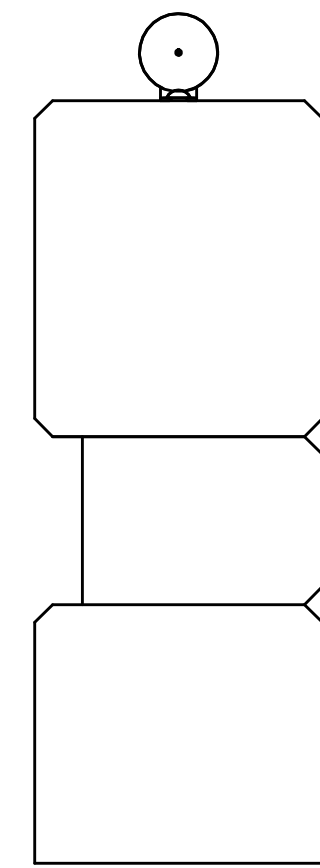
STATE	PROJECT NO.	YEAR	SHEET NO.	TOTAL SHEETS
KANSAS				



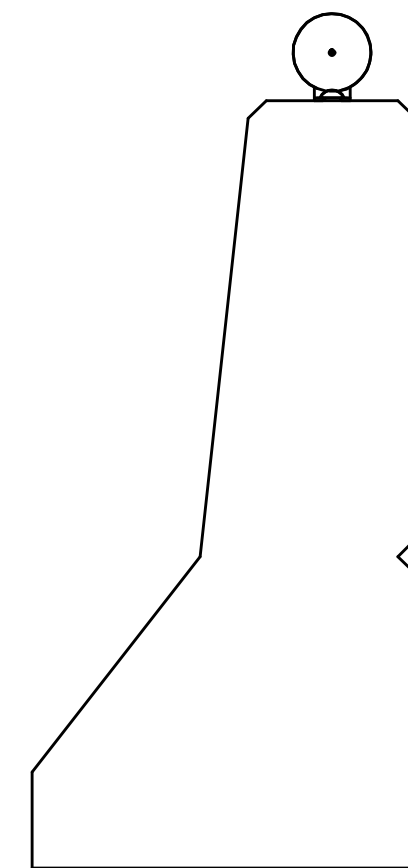
Typical Mounting on W-Beam Guardrail



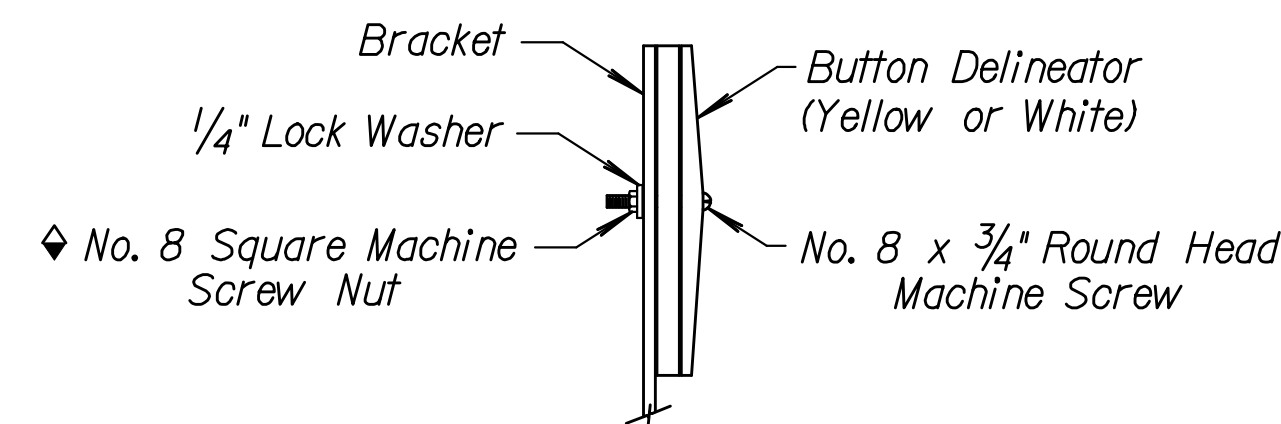
Typical Mounting on Three Beam Guardrail



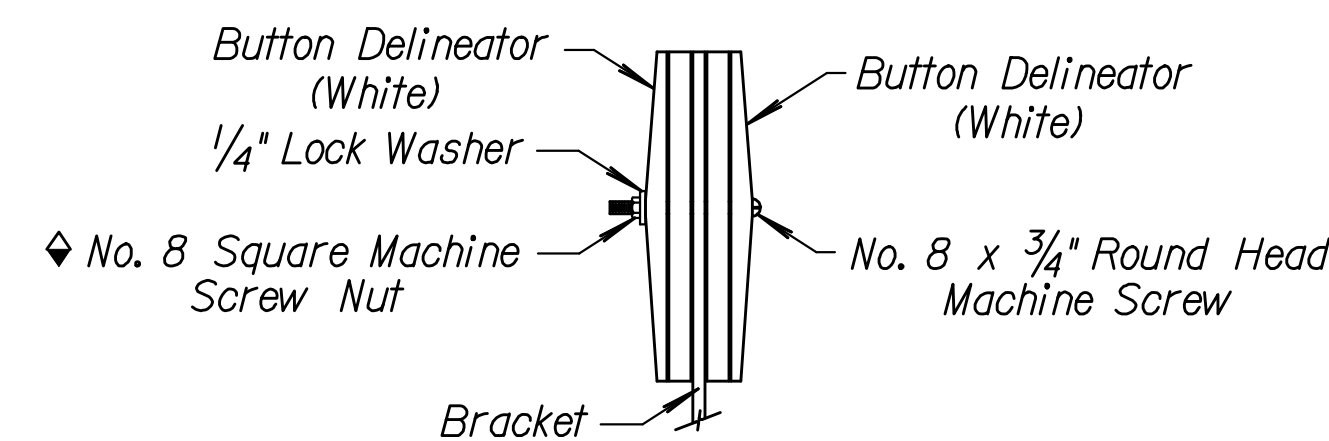
Typical Mounting on Corral Rail



Typical Mounting on Barrier Curb Bridge Rail

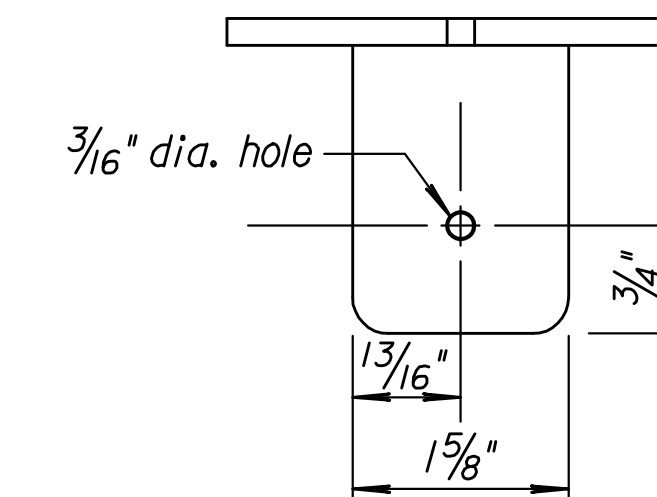


Button Delineator Mounting One-Way Traffic

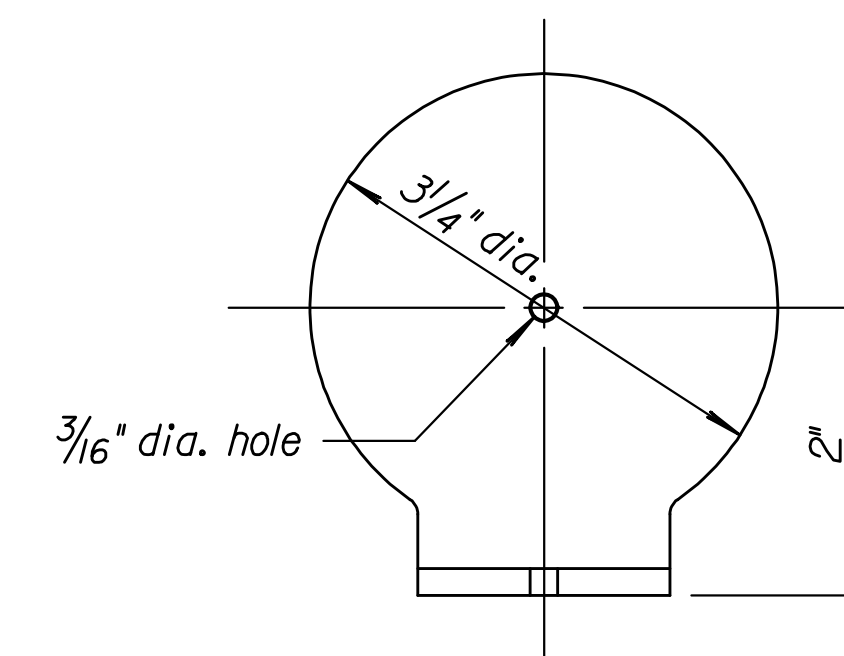


Button Delineator Mounting Two-Way Traffic

◆ As an alternate to the No. 8 machine screw the button delineators may be fastened to the bracket with pop rivets.



Top View

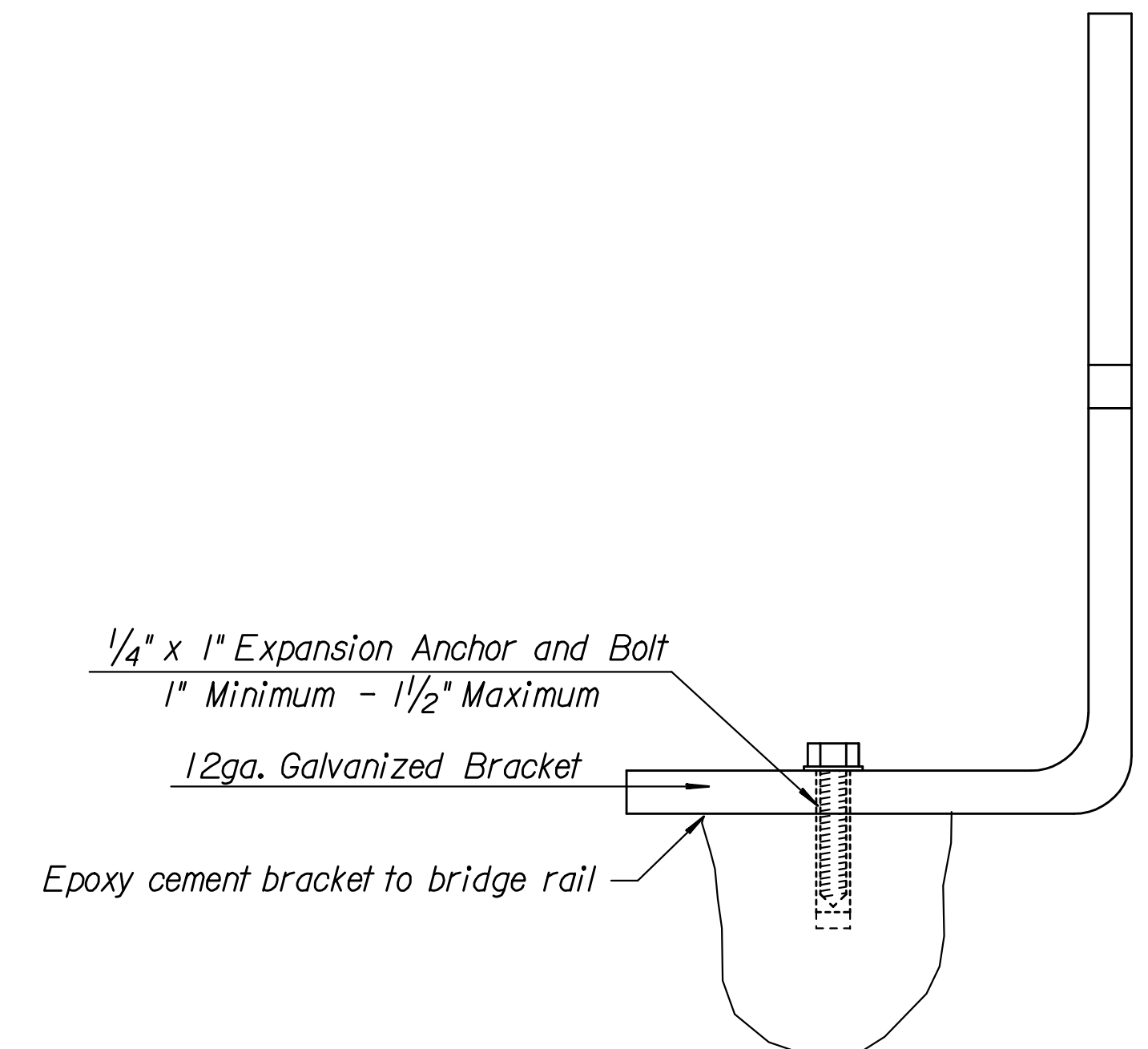


Front View



Side View

Bracket Details



Method of Attaching Bracket to Bridge Rail

General Notes

Delineators shall be installed on the traffic side of all guardrail installations. Spacing between delineators shall not exceed 25 feet. No delineator shall be located between the head and post 5 when the guardrail is terminated with a crashworthy end terminal. Delineators shall be located between posts (not on a post).

Delineators shall be installed on the top of bridge rails at a spacing not to exceed 50' except for long bridges (greater than 200' long) where the spacing may be increased to 100'.

Button delineators shall be installed back to back on the bracket when used on two-way roadways. All delineators used on two-way roadways shall be white.

When used on one-way or divided roadways, button delineators shall be installed on the approach traffic side of the bracket only. Delineator color shall be yellow when used on the left side and white when used on the right side of the roadway.

The 3/4 inch diameter button delineator shall comply with the KDOT Standard Specifications.

The bracket shall be fabricated from 12 ga. steel and shall be galvanized in accordance with the KDOT Standard Specifications.

All hardware used for the connections shall comply with the KDOT Standard Specifications.

All fasteners shall be either zinc or cadmium plated.

All work and materials required for the installation of the delineators on guardrail and bridge rails shall be Subsidiary to the bid item "Steel Plate Guardrail".

On projects with staged construction, such as a divided highway with one side closed and two-way traffic during construction, delineators shall be installed for the final (permanent) traffic configuration.

NO.	DATE	REVISIONS	BY	APP'D
5	7-20-04	Changed Guard fence to Guardrail	S.W.K.	J.O.B.
4	5-5-00	Added note for temporary traffic	R.J.S.	J.O.B.
3	12-1-97	Revised connection Hardware Note	R.J.S.	J.O.B.

KANSAS DEPARTMENT OF TRANSPORTATION

DELINEATION DETAILS FOR GUARDRAIL AND BRIDGE RAILS

RD610

DESIGNED	11-02-04	APP'D. James O. Brewer	QUANTITIES	TRACED	B.N.B.
DESIGN CK.	DETAIL CK.	QUAN. CK.	TRACE CK.	R.J.S.	