

NOTES

SPACER BLOCK size may be increased if necessary to locate posts beyond wide approach slab.

POSTS shall be 6"x8" wood or W6x15 steel (except posts A and B of Type H) of the same material type as used on approach guardrail, with 4" minimum concrete encasement.

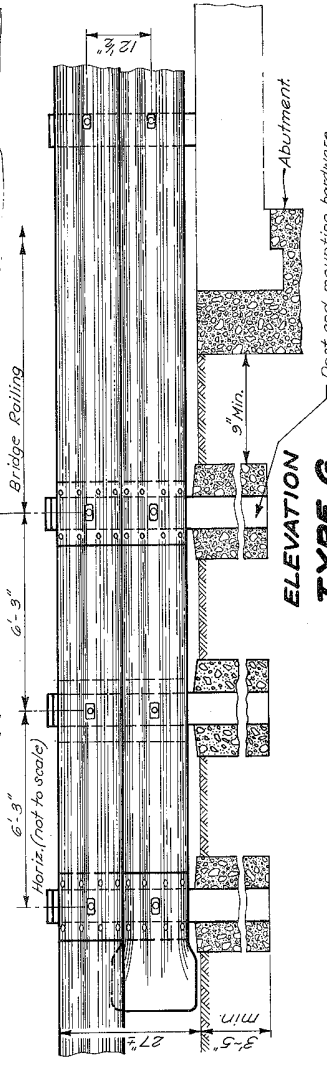
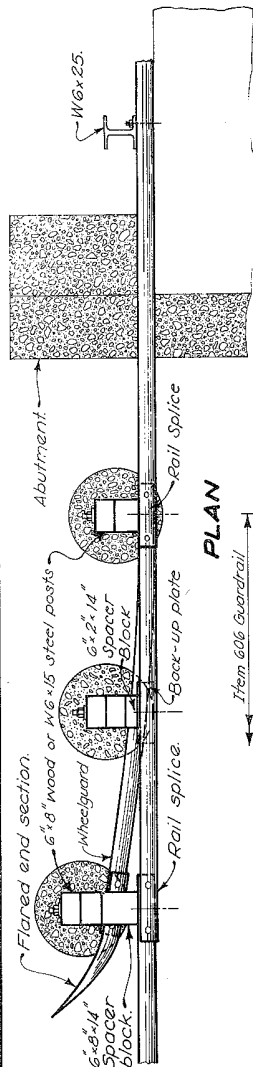
NOTE 1: These posts correspond with posts A and B as detailed on GR-4, except that they are mounted on plates as detailed on GR-1. Top of rail at post A shall be 27" above bridge deck.

NOTE 2: Place one additional enclosed post halfway between 2nd & 3rd posts (Type H) or 1st post and bridge parapet (Type J) when panel length exceeds 12'-6".

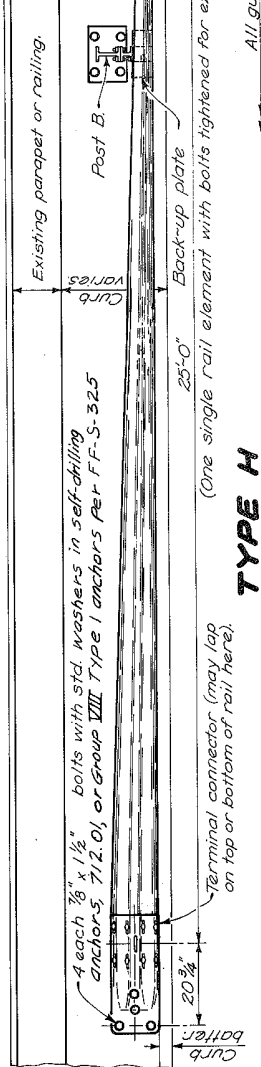
PAYMENT for item 606, each, Bridge terminal assembly, Type --, shall include the additional cost in excess of normal guard-rail cost, such as: additional or heavier posts, concrete encasement, wheelguard, extra rail, terminal connector, anchor bolts and other hardware.

FOR DETAILS not shown, see GR-1, GR-4 and other Standard Construction Drawings pertaining to design of specific guardrail type.

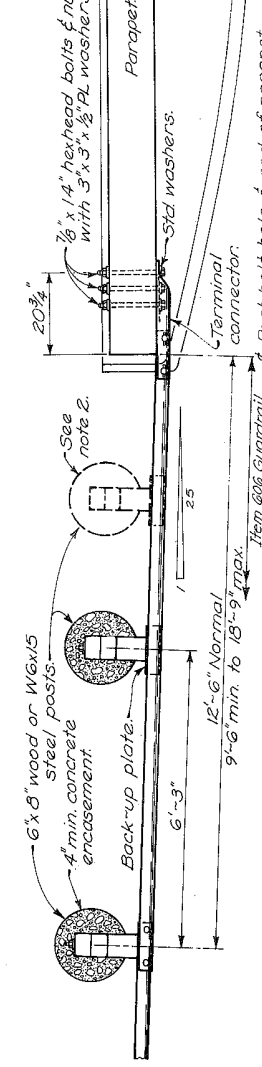
GUARDRAIL TERMINATION as directed by the Engineer. The 12'-6" normal rail section may vary as shown to facilitate connection or reconstruction of existing approach or guardrail. The 20 3/4" terminal connector or 9'-2" Post A location dimensions may be increased to avoid existing parapet steel.



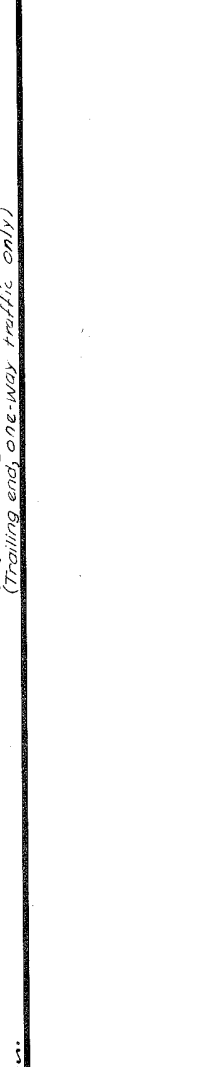
ELEVATION TYPE G



ELEVATION TYPE H



ELEVATION TYPE J



BUREAU OF LOCATION AND DESIGN
OHIO DEPARTMENT OF TRANSPORTATION

DATE
12-6-76
2-5-82
1-21-88

BRIDGE TERMINAL ASSEMBLIES

STANDARD CONSTRUCTION DRAWING
GR-3B

APPROVED: *[Signature]*
ENGR. L.B.D.