
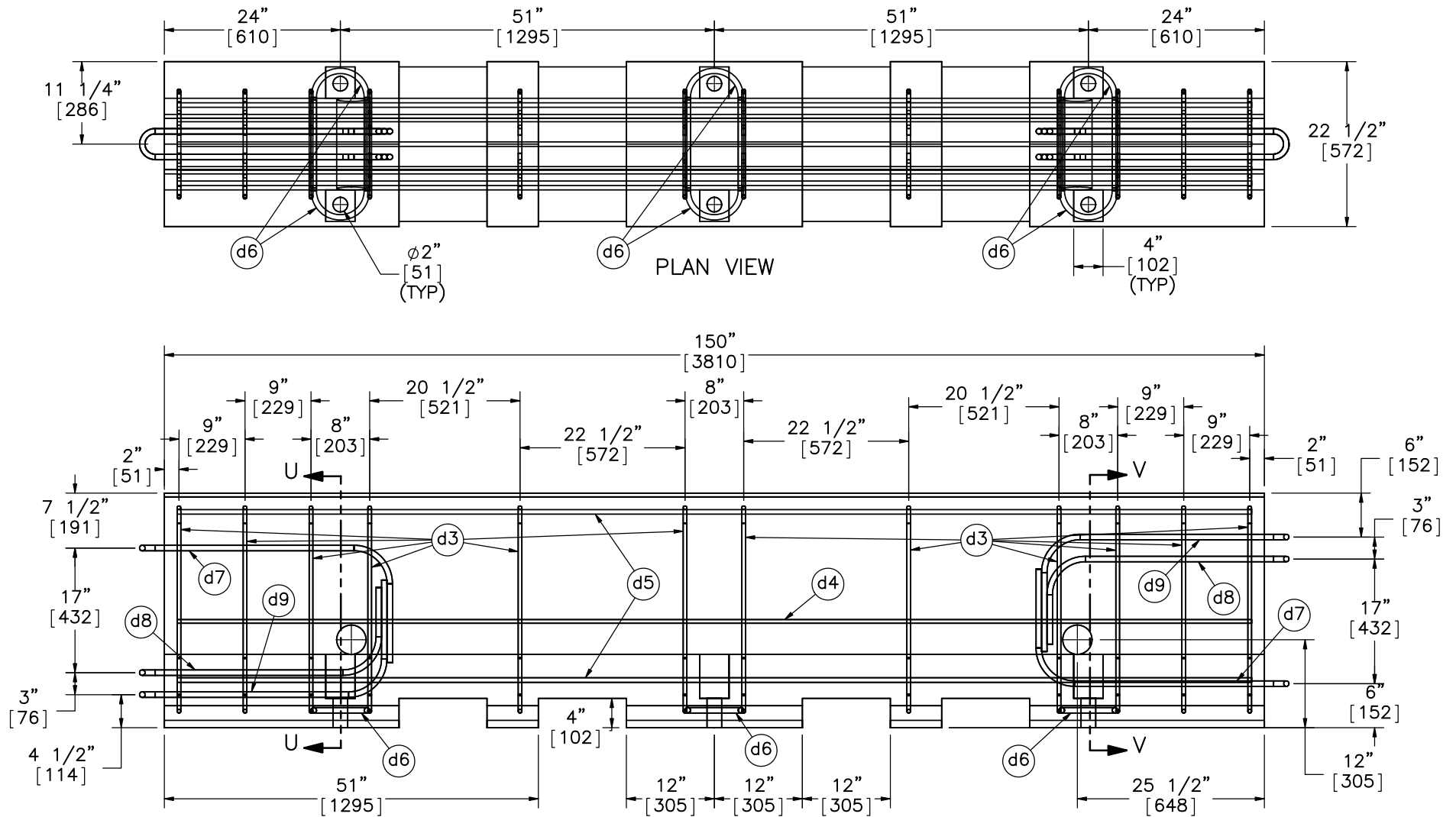


- Notes: (1) Test shall be performed according to test designation no. 3–35 of MASH criteria.
- (2) Impact point is 51 3/16" (1.3 m) upstream from the centerline of the joint between barrier nos. 4 and 5.
- (3) The ends of the barrier should be pulled until there is no slack in the joints.

 Midwest Roadside Safety Facility	NDOR PCB LON Test 2		SHEET: 1 of 6
	System Layout		DATE: 3/4/2016
DWG. NAME: NDORPCB_LON2_R1		SCALE: 1:150 UNITS: in.[mm]	DRAWN BY: EMR/TJD
			REV. BY: KAL/RWB



ELEVATION VIEW

Part d1

Note: (1) Concrete has minimum 28-day compressive strength of 5000 psi (34.5 MPa).



Midwest Roadside Safety Facility

NDOR PCB LON Test 2

Portable Concrete Barrier

DWG. NAME:
NDORPCB_LON2_R1

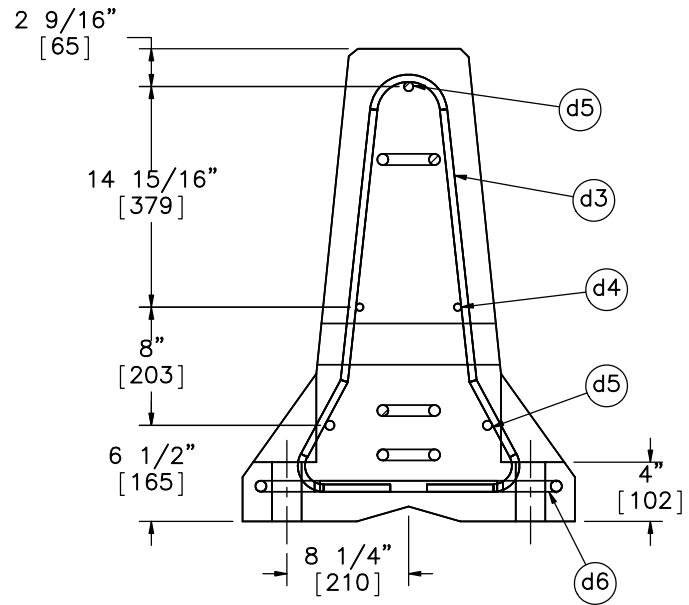
SCALE: 1:20
UNITS: in.[mm]

SHEET:
2 of 6

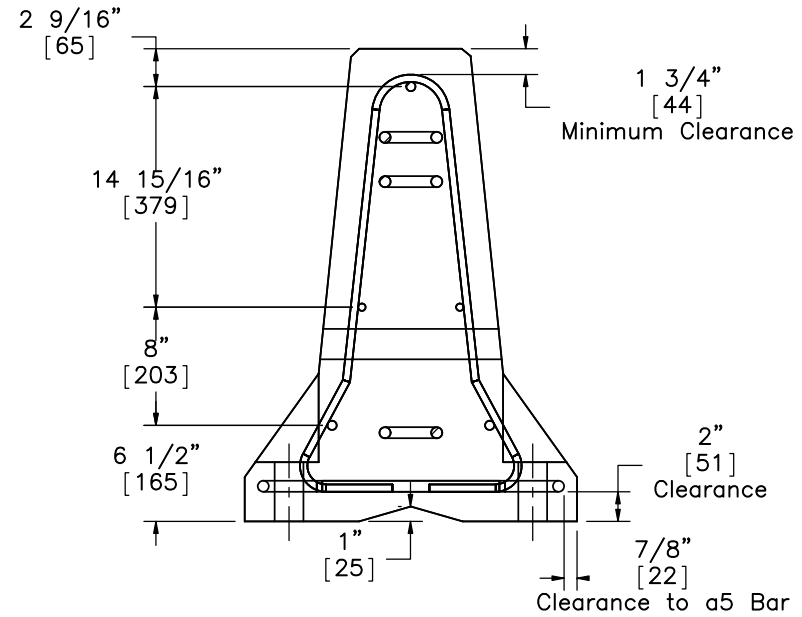
DATE:
3/4/2016

DRAWN BY:
EMR/TJD

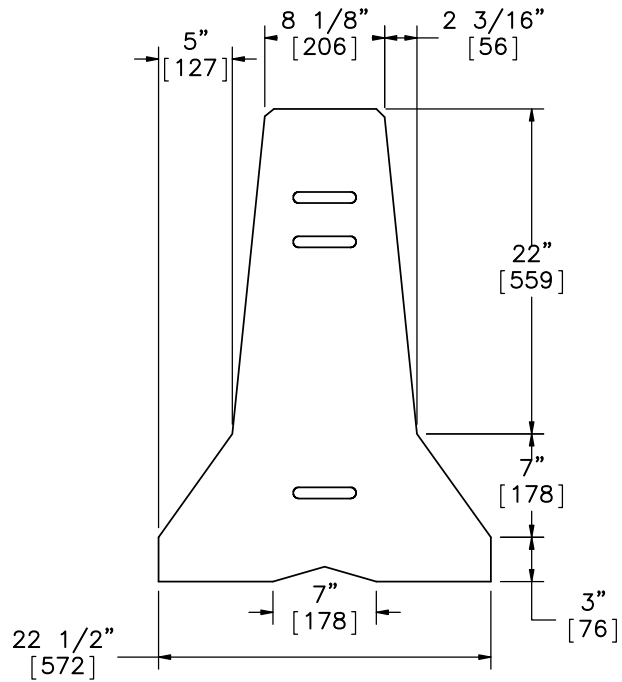
REV. BY:
KAL/RWB



SECTION U-U



SECTION V-V



PROFILE VIEW



Midwest Roadside Safety Facility

NDOR PCB LON
Test 2

Portable Concrete Barrier
Profile Detail

DWG. NAME:
NDORPCB_LON2_R1

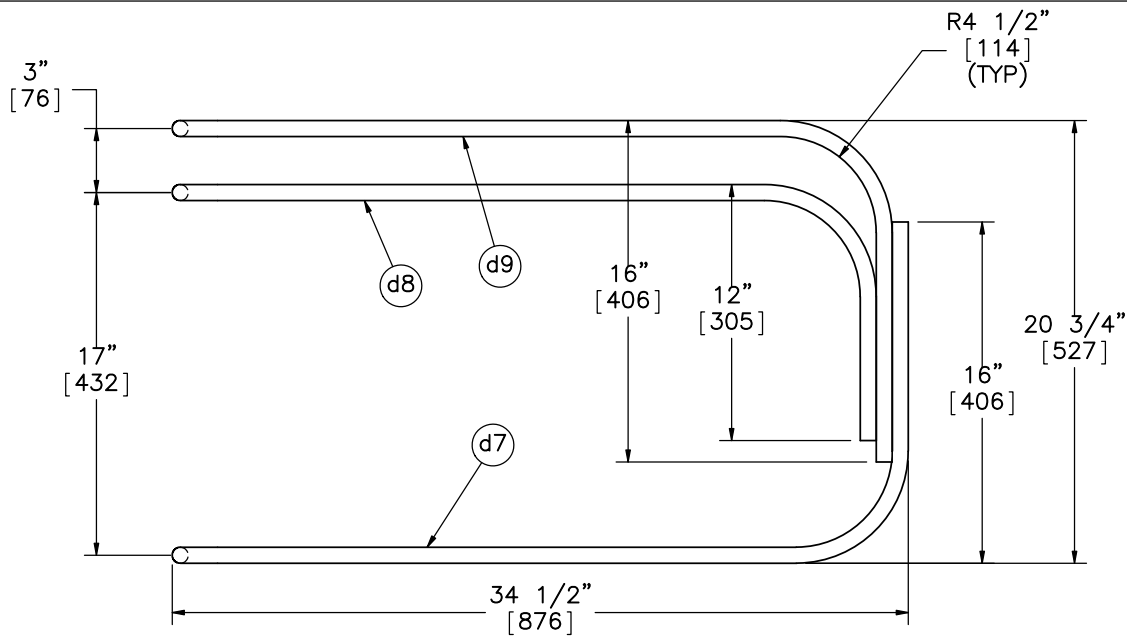
SCALE: 1:13
UNITS: in.[mm]

SHEET:
3 of 6

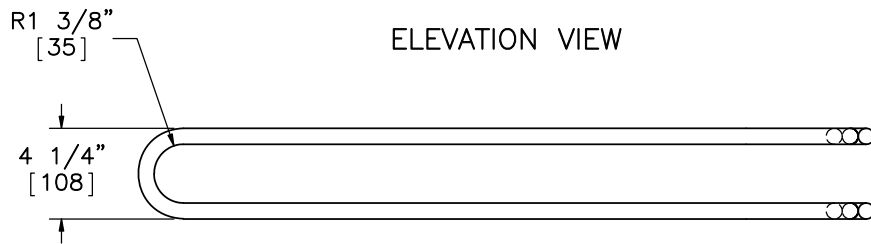
DATE:
3/4/2016

DRAWN BY:
EMR/TJD

REV. BY:
KAL/RWB



ELEVATION VIEW



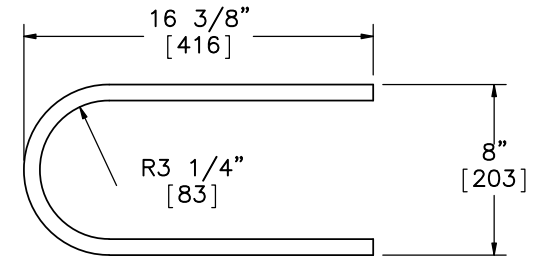
PLAN VIEW

Loop Bar Assembly

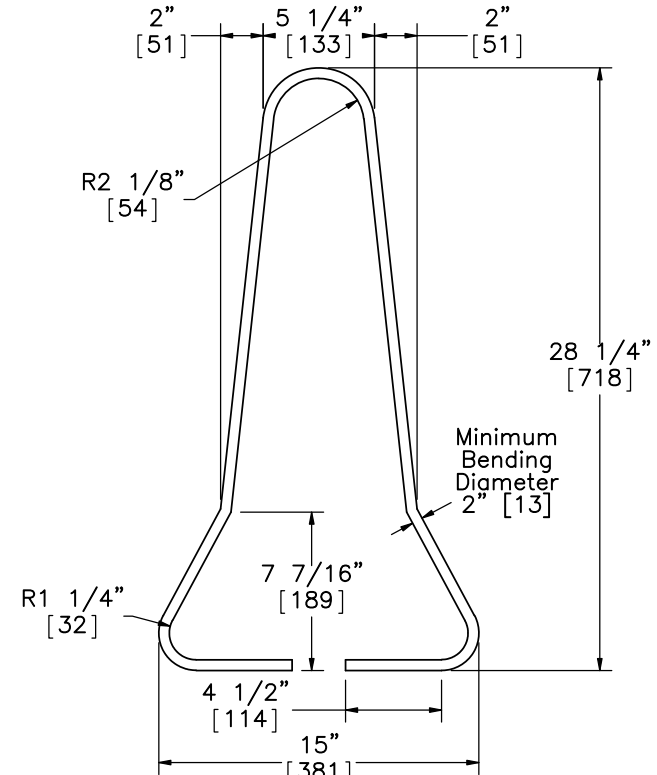
Notes:(1) The steel shall be zinc-coated (galvanized) as specified below or epoxy coated to Nebraska standards.

Zinc-coated (galvanized steel bars shall meet the requirements of ASTM A123, (coating grade 100, minimum coating - 2.30 oz. per square foot). The bars shall be fabricated prior to galvanizing. The procedures of ASTM A143 shall be observed as applicable. All zinc coating damage due to fabrication or handling shall be repaired with a zinc dust (zinc-rich) formulation in accordance with ASTM A780.

(2) Use epoxy coated steel for loop bars for crash testing.



Part d6



Part d3



Midwest Roadside
Safety Facility

NDOR PCB LON
Test 2

Bill of Bars - Portable
Concrete Barriers

DWG. NAME:
NDORPCB_LON2_R1

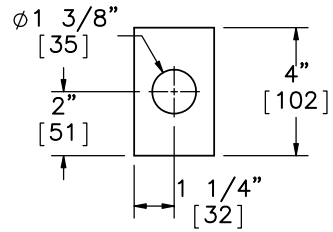
SCALE: 1:9
UNITS: in.[mm]

SHEET:
4 of 6

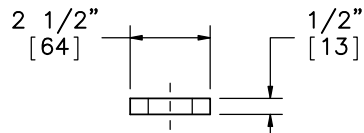
DATE:
3/4/2016

DRAWN BY:
EMR/TJD

REV. BY:
KAL/RWB

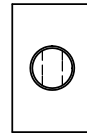


PLAN VIEW

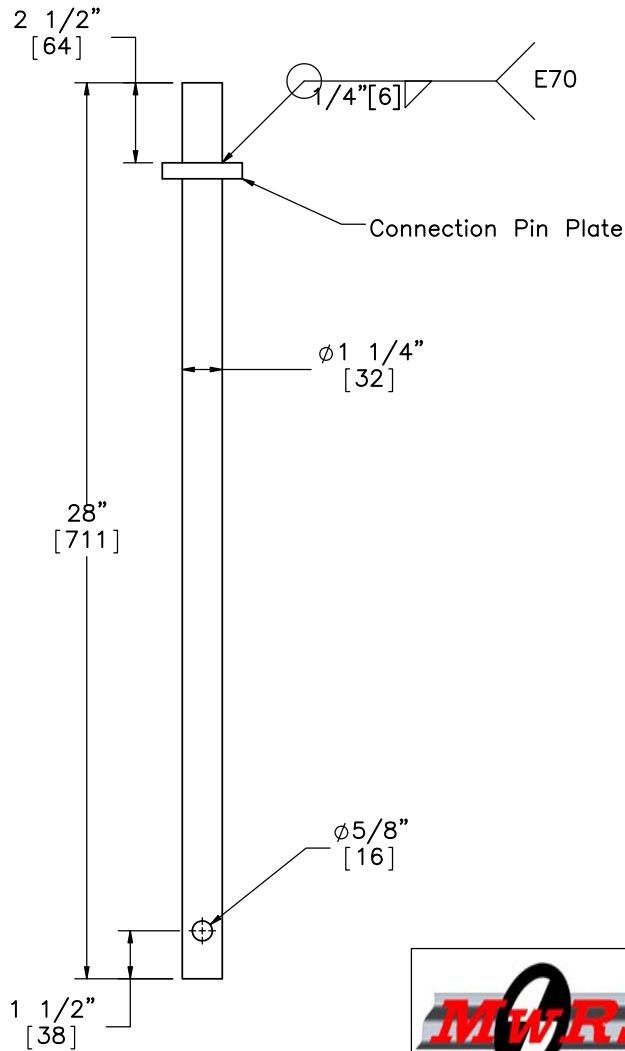


ELEVATION VIEW

Connection Pin Plate

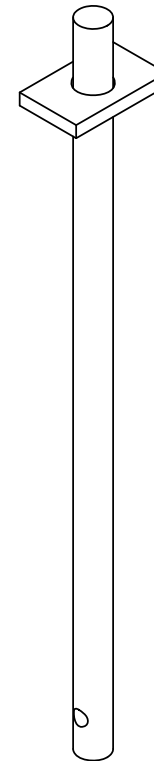


PLAN VIEW



ELEVATION VIEW

Part d2



ISOMETRIC VIEW



Midwest Roadside Safety Facility

NDOR PCB LON
Test 2

Connection Pin Detail

DWG. NAME:
NDORPCB_LON2_R1

SCALE: 1:6
UNITS: in.[mm]


SHEET:
5 of 6

DATE:
3/4/2016

DRAWN BY:
EMR/TJD

REV. BY:
KAL/RWB

Item No.	QTY.	Description	Material Spec	Hardware Guide
d1	8	NDOR Portable Concrete Barrier	min f'c=5000 psi [34.5 MPa]	SWC09
d2	7	1 1/4" [32] Dia., 28" [711] Long Connector Pin	ASTM A36	FMW02
d3	96	1/2" [13] Dia., 72" [1829] Long Form Bar	ASTM A615 Grade 60	—
d4	16	1/2" [13] Dia., 146" [3708] Long Longitudinal Bar	ASTM A615 Grade 60	—
d5	24	5/8" [16] Dia., 146" [3708] Long Longitudinal Bar	ASTM A615 Grade 60	—
d6	48	3/4" [19] Dia., 36" [914] Long Anchor Loop Bar	ASTM A615 Grade 60, Epoxy Coated or Galvanized	—
d7	16	3/4" [19] Dia., 102" [2591] Long Connection Loop Bar	ASTM A709 Grade 70 or A706 Grade 60, Epoxy Coated or Galvanized	—
d8	16	3/4" [19] Dia., 91" [2311] Long Connection Loop Bar	ASTM A709 Grade 70 or A706 Grade 60, Epoxy Coated or Galvanized	—
d9	16	3/4" [19] Dia., 101" [2565] Long Connection Loop Bar	ASTM A709 Grade 70 or A706 Grade 60, Epoxy Coated or Galvanized	—

	NDOR PCB LON Test 2	SHEET: 6 of 6
	Bill of Materials	DATE: 3/4/2016
Midwest Roadside Safety Facility	DWG. NAME: NDORPCB_LON2_R1	DRAWN BY: EMR/TJD
	SCALE: None UNITS: in.[mm]	REV. BY: KAL/RWB