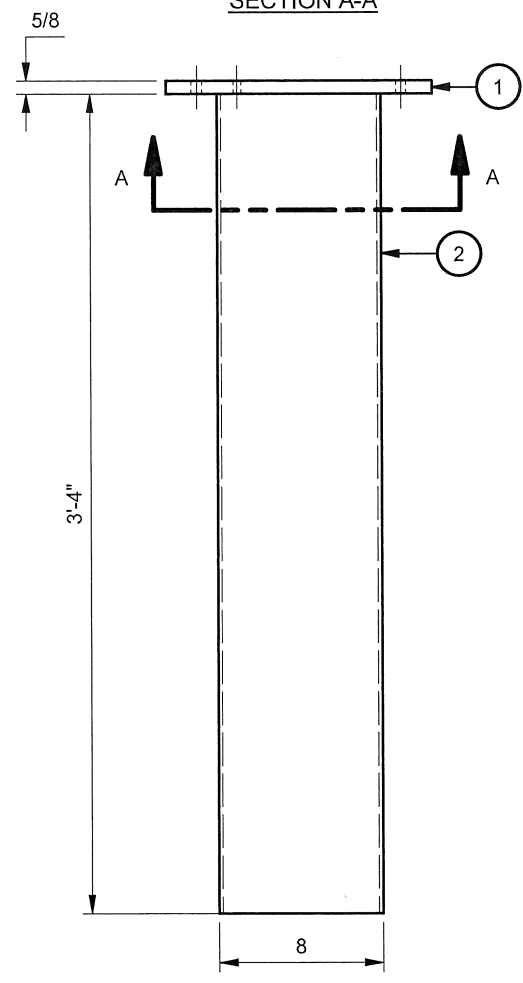
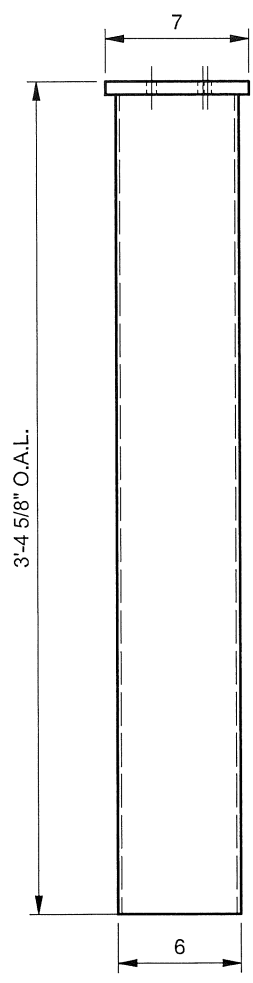
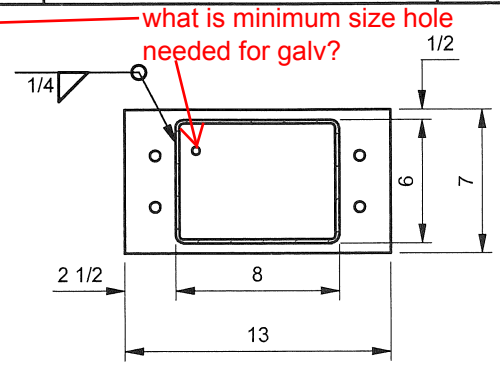
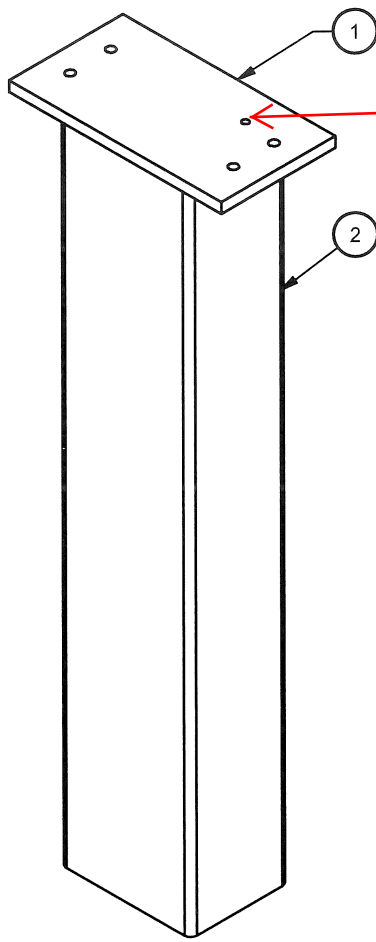


PARTS LIST			
ITEM	PART NO.	DESCRIPTION	QTY.
1	130731	7" x 13" x 5/8" LOWER SHEAR PLATE	1
2	130730	6"x 8" x 3/16" TUBE	1



MATERIAL: SEE PARTS LIST	
FINISH: GALVANIZE, ASTM A123	
EST UNFINISHED WT:	73 lbs

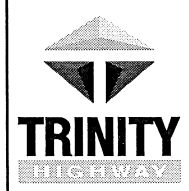
NOTES:
1. FINISH AND GENERAL WORKMANSHIP PER CEMC-THP-SF-004, UNLESS OTHERWISE SPECIFIED.

DRAWN: J. MUSIAL	DATE: 4/10/2018				
CHECKED: L. HOGUE	DATE: 4/11/2018				
UNLESS OTHERWISE NOTED, ALL DIMENSIONS ARE IN INCHES. DIMENSIONS ACCORDING TO ASME Y14.5M AND CEMC-THP-SE-003 UNLESS OTHERWISE SPECIFIED.					
Revision	ECO	Date	Rev	By	Chk.
CREATE DWG FOR NEW PART	5316	4/17/18	—	JM	BT

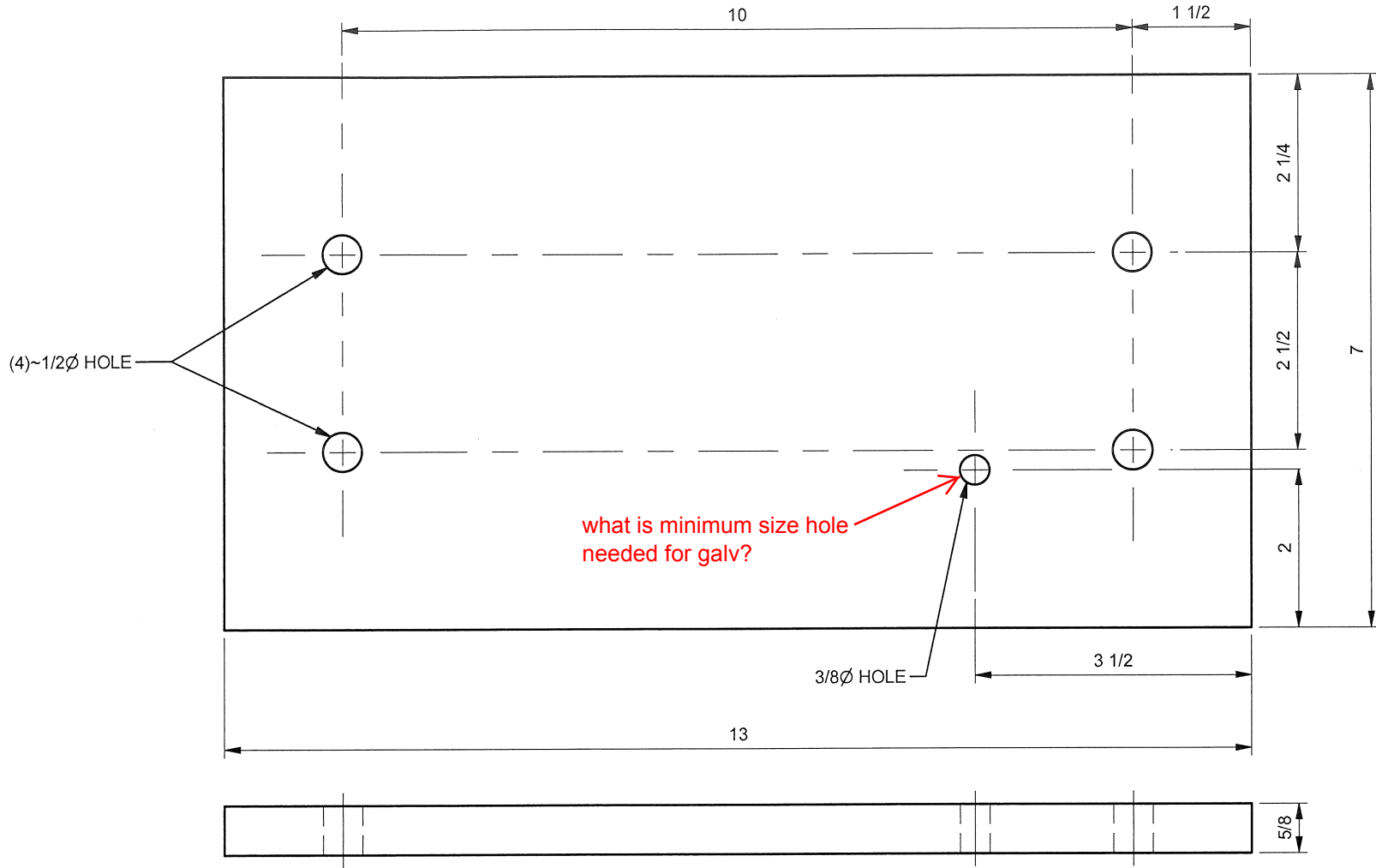
TOLERANCES PER CEMC-THP-SF-001, UNLESS OTHERWISE SPECIFIED.					
DO NOT SCALE DRAWING					

LOWER POST WELDMENT
T.S. 6" x 8" x 3/16" x 3'-4"
7" x 13" x 5/8" PLATE



DRAWING: 130732 REV: — SHEET: 1 of 1



© 2018 Trinity Highway Products, LLC. All rights reserved.



NOTES:
 1. FINISH AND GENERAL WORKMANSHIP PER CEMC-THP-SF-004, UNLESS OTHERWISE SPECIFIED.

MATERIAL: ASTM A36	DRAWN: J. MUSIAL	DATE: 4/6/2018	TOLERANCES PER CEMC-THP-SF-001, UNLESS OTHERWISE SPECIFIED.					7" x 13" x 5/8" LOWER SHEAR PLATE	
	CHECKED: L. HOGUE	DATE: 4/11/2018							
FINISH: UNFINISHED	UNLESS OTHERWISE NOTED, ALL DIMENSIONS ARE IN INCHES. DIMENSIONS ACCORDING TO ASME Y14.5M AND CEMC-THP-SE-003 UNLESS OTHERWISE SPECIFIED.		DO NOT SCALE DRAWING						
	Revision	ECO	Date	Rev	By	Chk.			
	CREATE DWG FOR NEW PART	5316	4/17/18	—	JM	BT			
EST UNFINISHED WT:	16 lbs						 DRAWING: 130731	REV: —	SHEET: 1 of 1