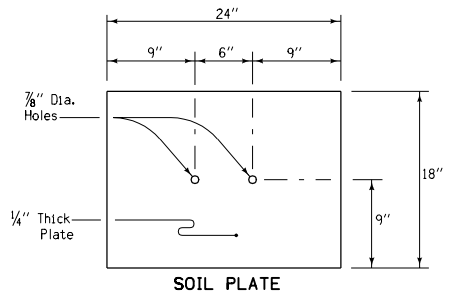
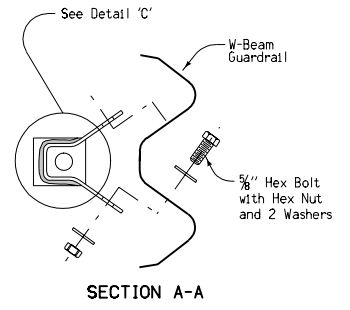


**GENERAL NOTES**  
 All hardware shall conform to the specifications set forth in "A Guide to Standardized Barrier Hardware", published by AASHTO.

The price bid for "Guardrail, End Anchorage, Beam, RE-33A", shall be considered full compensation for furnishing the materials detailed on this sheet and the construction of the end anchorage. W-Beam guardrail and 6" x 8" post with blockout are not included with this bid item.

- ① Two 7.5" long, 3/4" hex bolt, nut and washers under head and nut.
- ② One 10" long, 3/4" hex bolt, nut and washers under head and nut.



<b>STANDARD ROAD PLAN RE-33A</b>	
REVISION: Remove bottom strut at ground line.	REVISION NO. 4
<i>William J. Stein</i> APPROVED BY DESIGN METHODS ENGINEER	REVISION DATE 10-21-03
<b>BEAM GUARDRAIL          END ANCHORAGE          (W BEAM)</b>	