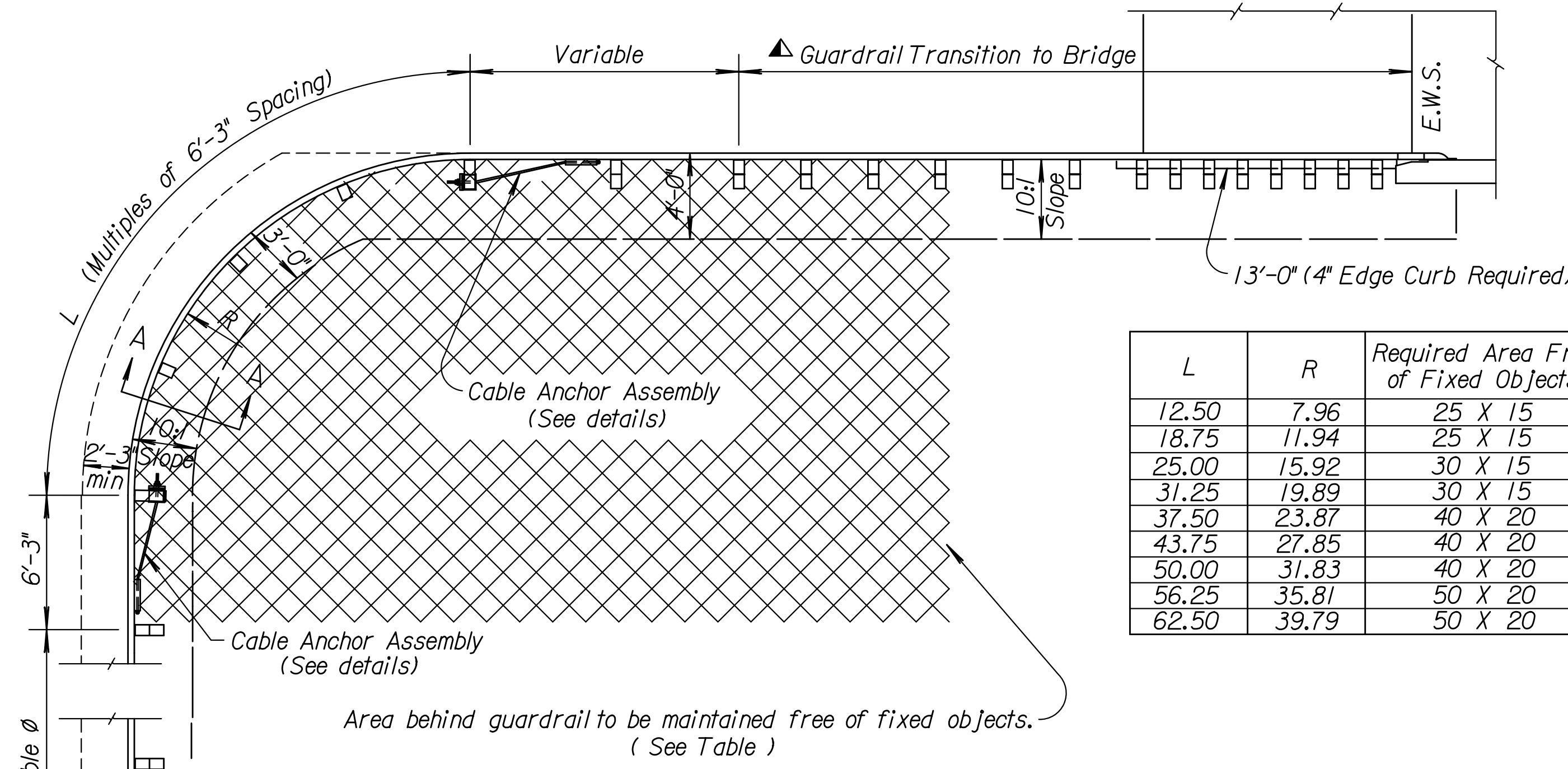
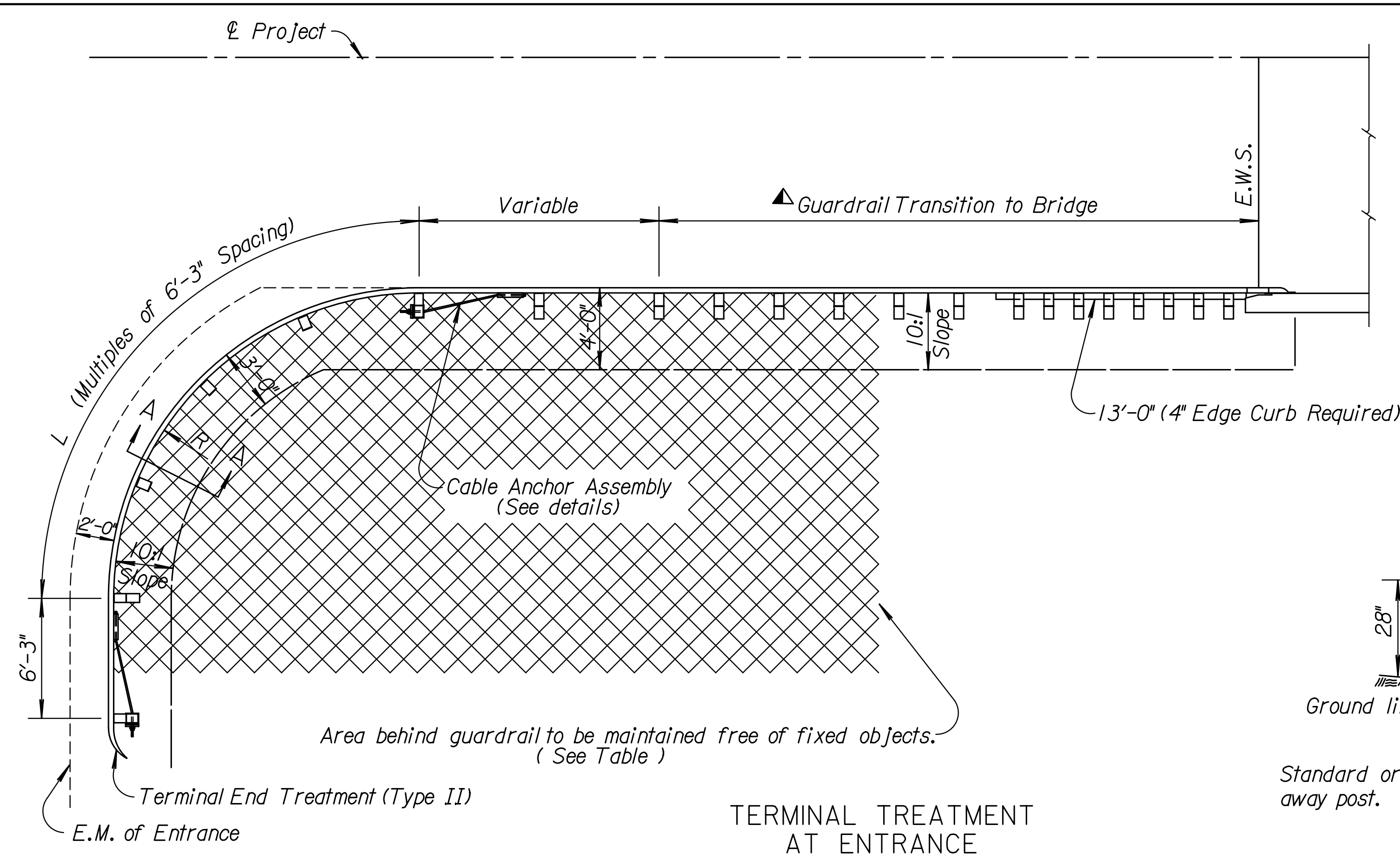


STATE	PROJECT NO.	YEAR	SHEET NO.	TOTAL SHEETS
KANSAS				

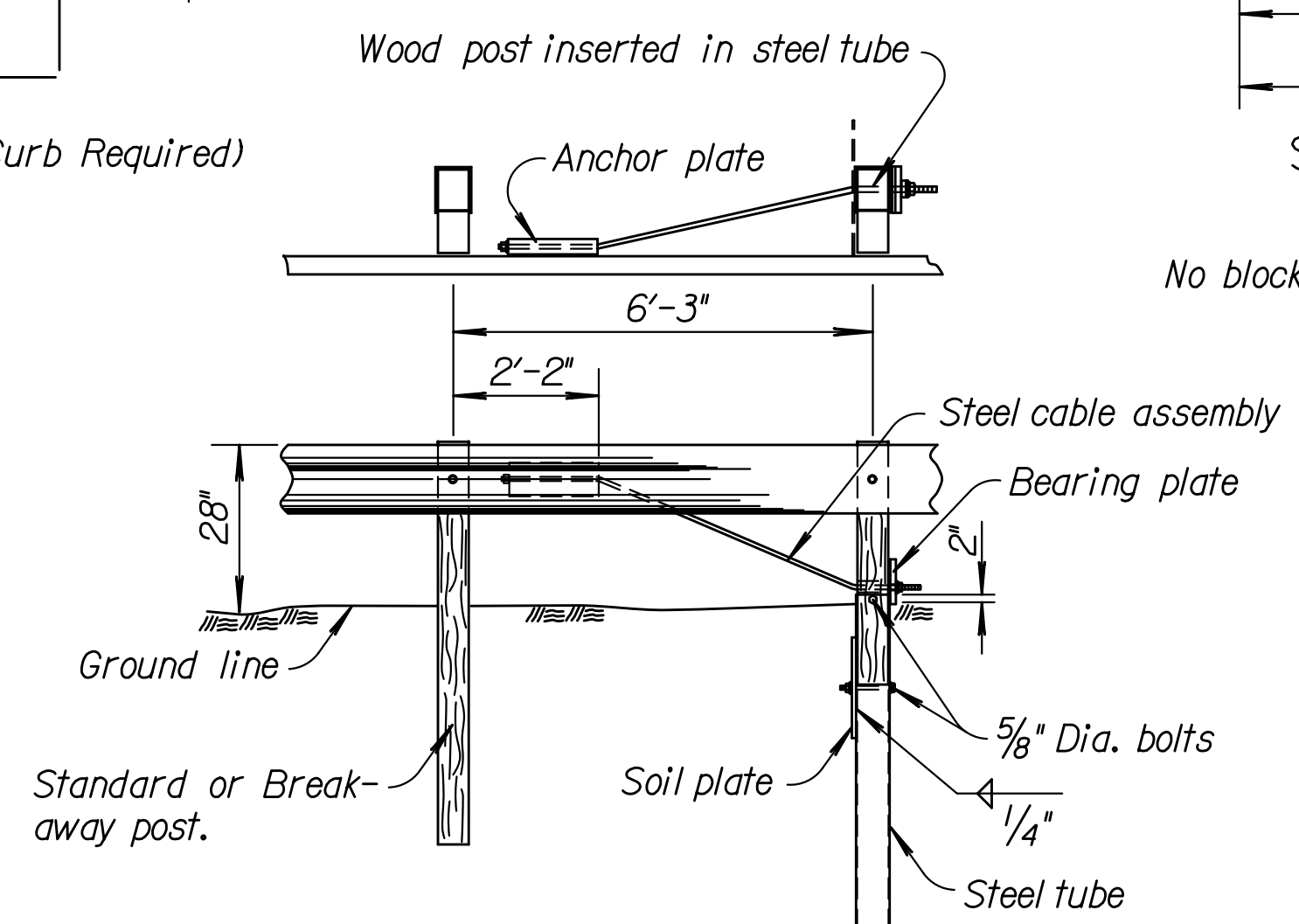


L	R	Required Area Free of Fixed Objects
12.50	7.96	25 X 15
18.75	11.94	25 X 15
25.00	15.92	30 X 15
31.25	19.89	30 X 15
37.50	23.87	40 X 20
43.75	27.85	40 X 20
50.00	31.83	40 X 20
56.25	35.81	50 X 20
62.50	39.79	50 X 20

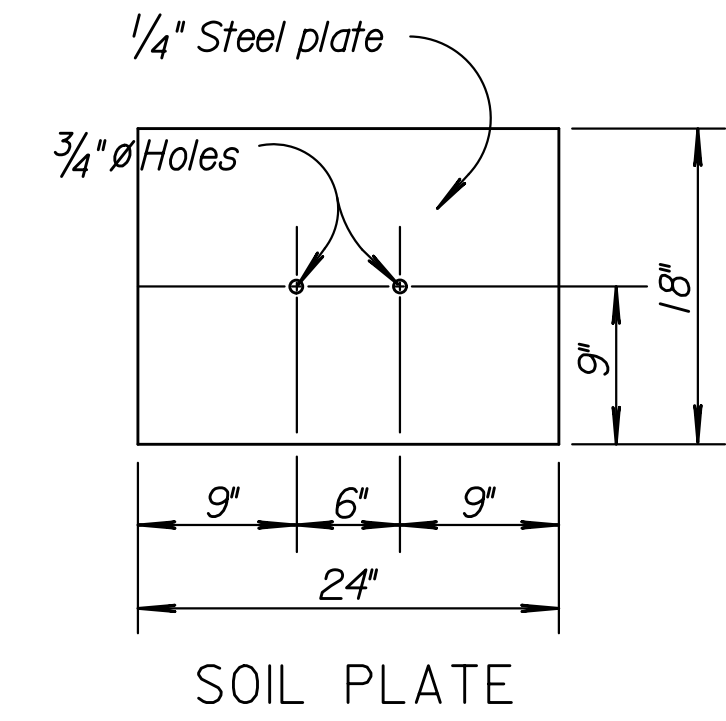
⊗ SRT shown. Other crashworthy terminals may be utilized. See the guardrail layout sheets for additional details.

∅ Variable length must be in multiple of 6'-3". Length required is based on length of need for approach sideroad traffic. See guardrail layout details for length.

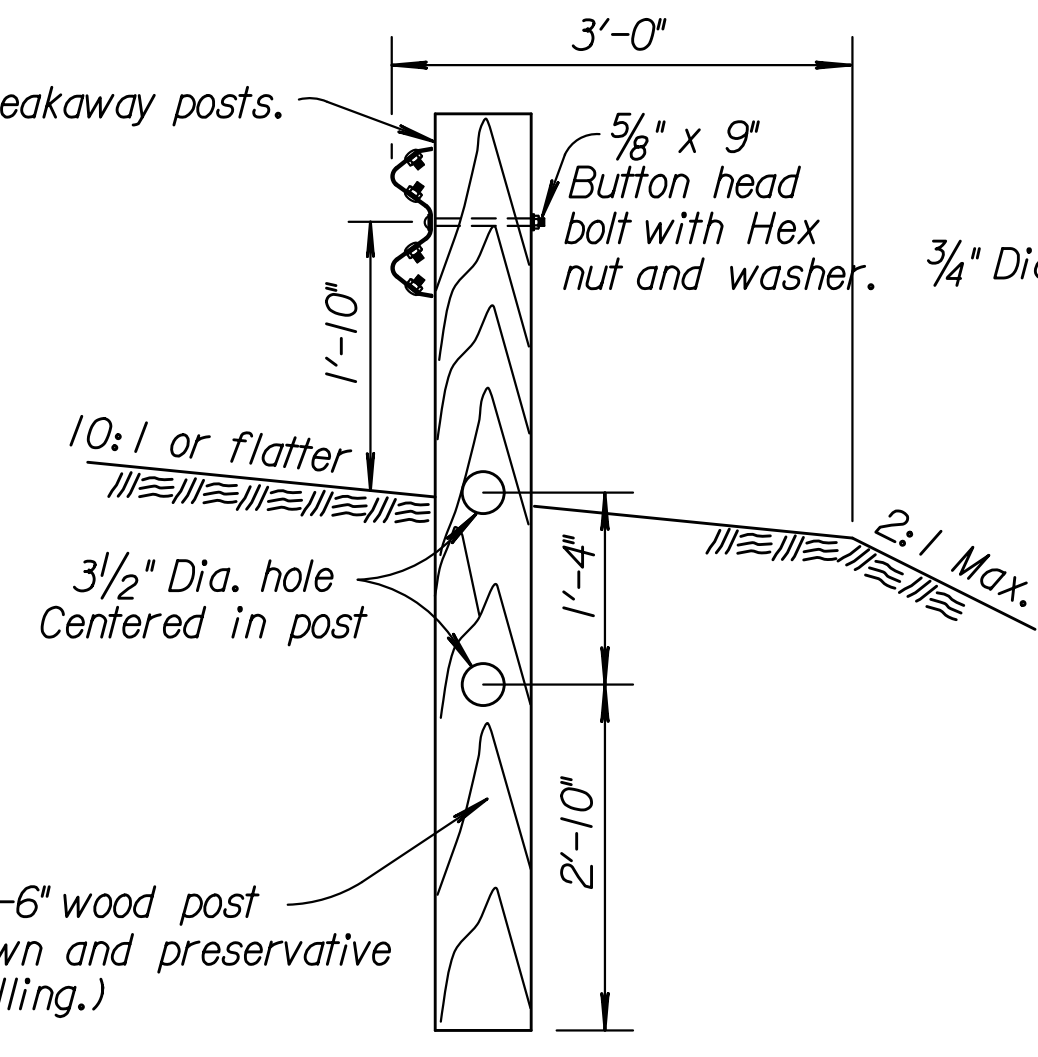
▲ 31'-3" Minimum length for thrie beam transition. See Standard Drawings RD612 & RD613.
 25'-0" Minimum length for W-beam with rubrail transition. See Standard Drawing RD615.



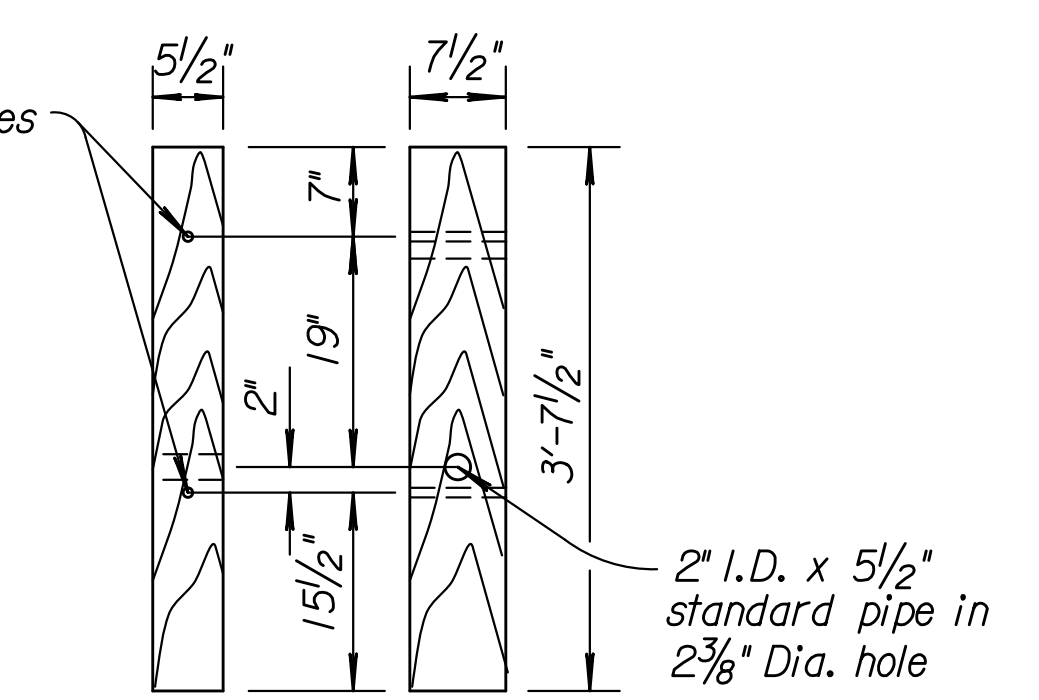
ANCHOR ASSEMBLY



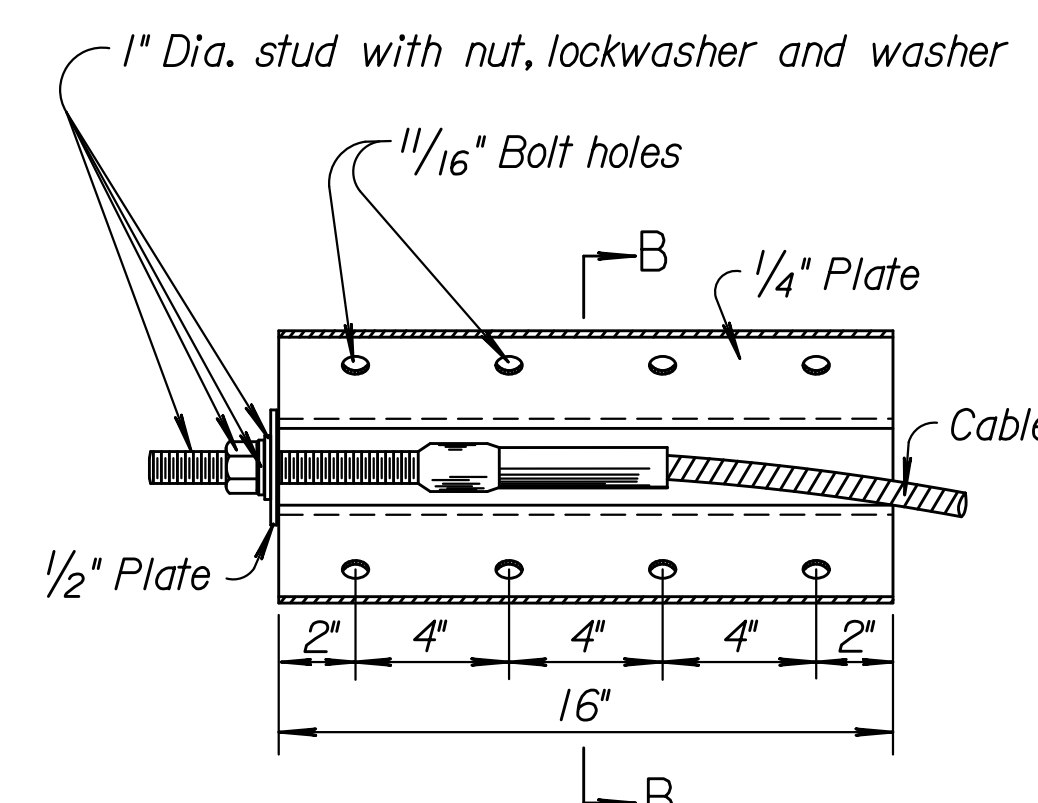
SOIL PLATE



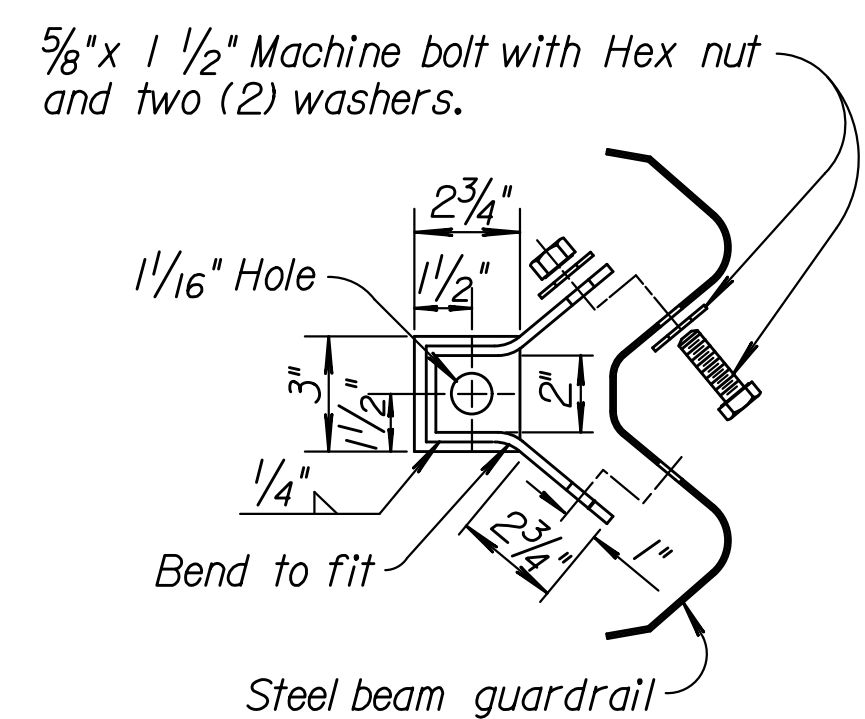
SECTION A-A



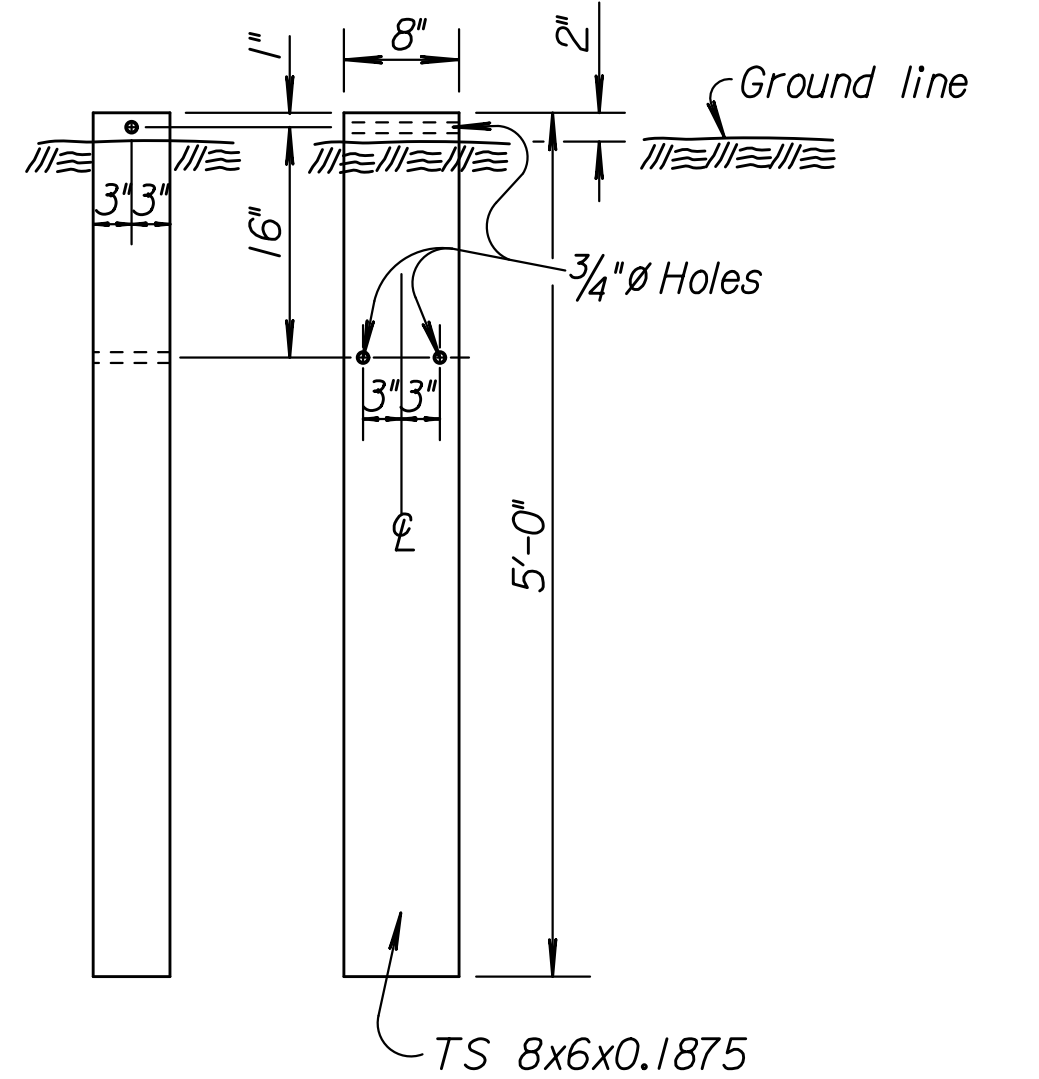
ANCHOR ASSEMBLY POST



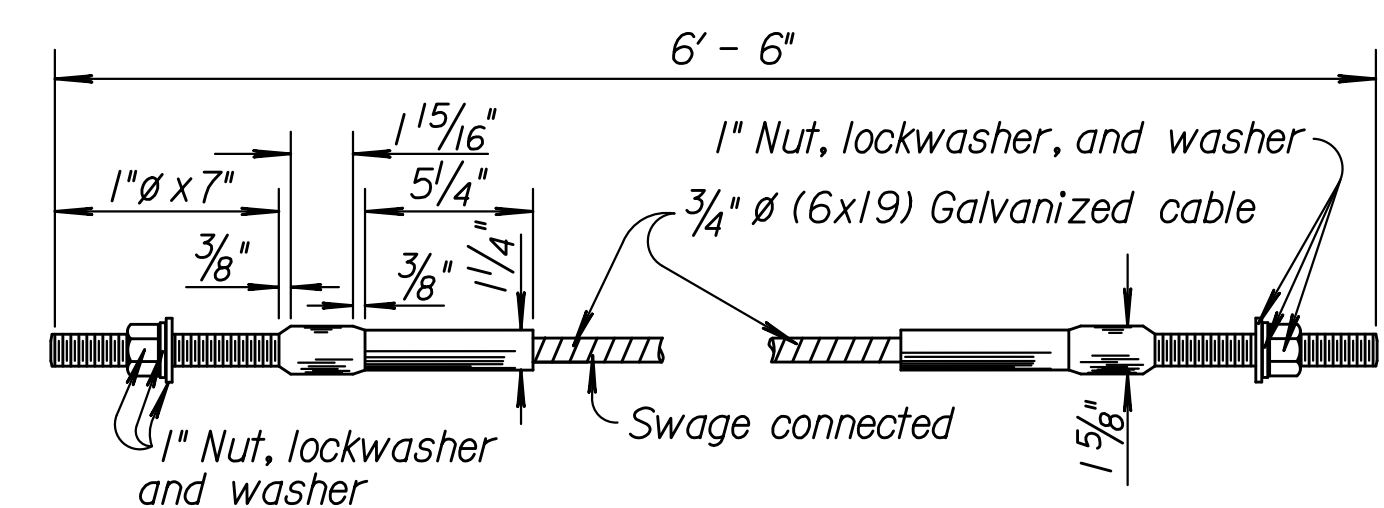
ANCHOR PLATE



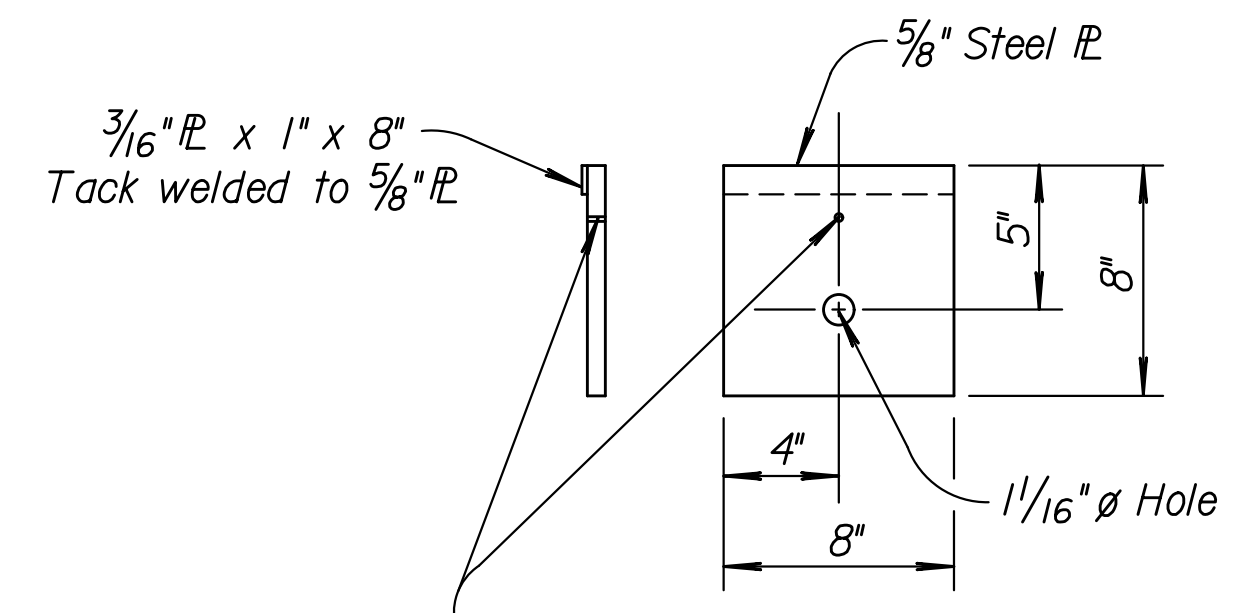
MODIFIED SECTION B-B



STEEL TUBE



CABLE ASSEMBLY
(40,000 lbs. min. breaking strength)
Tighten cable to taut tension.



BEARING PLATE

NO.	DATE	REVISIONS	BY	APP'D
7	12-14-10	Rev. notes, details & 28' rail height	S.W.K.	J.O.B.
6	7-20-04	Rev. layout, notes, g.d.f.c. to guardrail	R.J.S.	J.O.B.
5	3-05-01	Add sideroad detail	R.J.S.	J.O.B.

KANSAS DEPARTMENT OF TRANSPORTATION

DETAILS FOR GUARDRAIL INSTALLATION AT INTERSECTING ROADWAY

RD619

DESIGNED	I-11-11	APP'D	James O. Brewer
DRAWN	QUANTITIES	TRACED	Bowser
CHECKED	DETAIL CK.	QUAN. CK.	TRACE CK. King

KDOT Graphics Certified 01-31-2011

Plotted: 03-FEB-2011 08:01
 Drawn By: bert
 File: rd619.dgn (rd619)

KDOT Graphics Certified