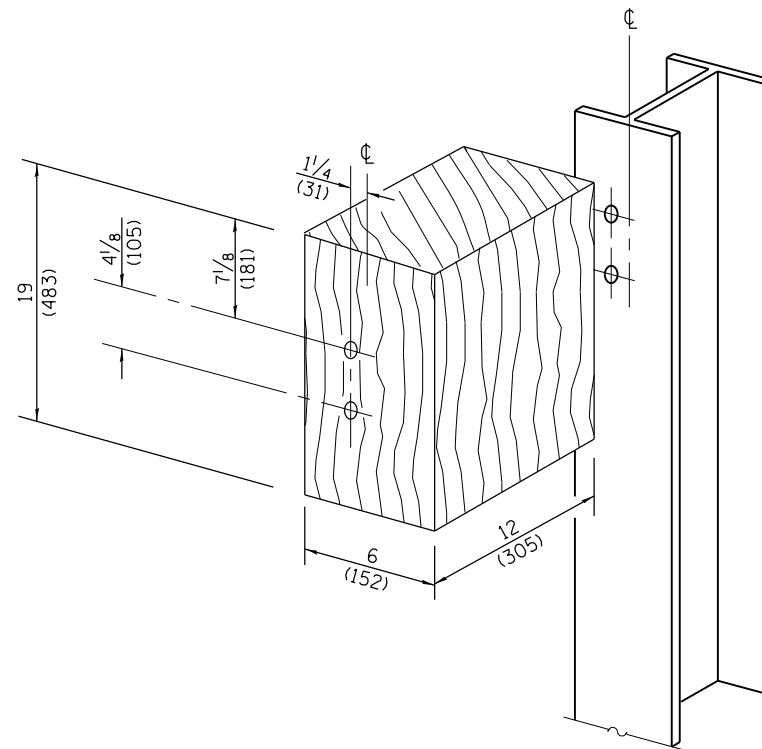
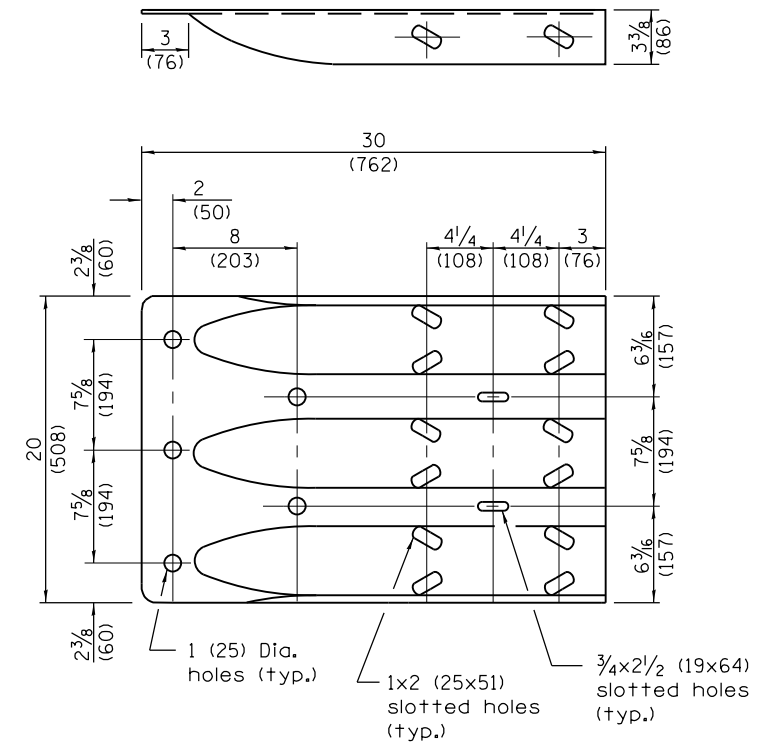


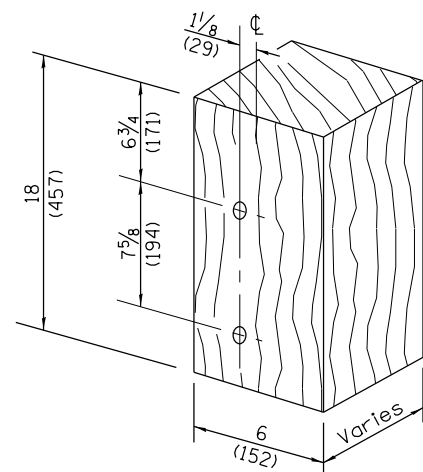
POSTS 1-11 WOOD BLOCKOUT DETAIL



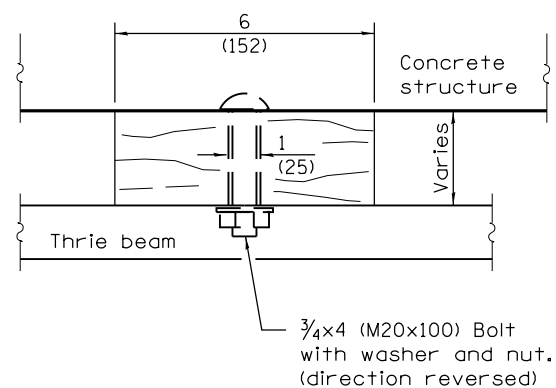
POST 12 WOOD BLOCKOUT DETAIL
(See Standard 630001 for post 13-17 blockouts.)



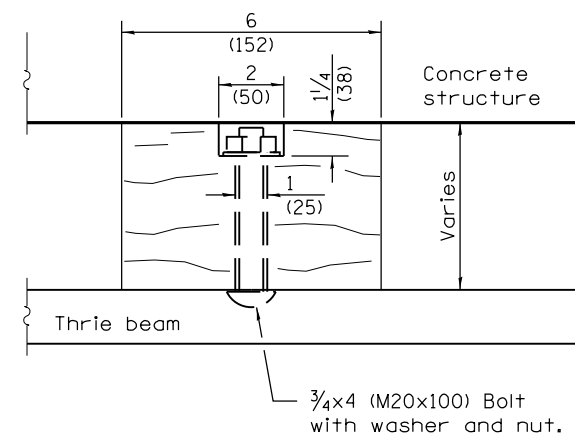
THRIE BEAM END SHOE DETAIL



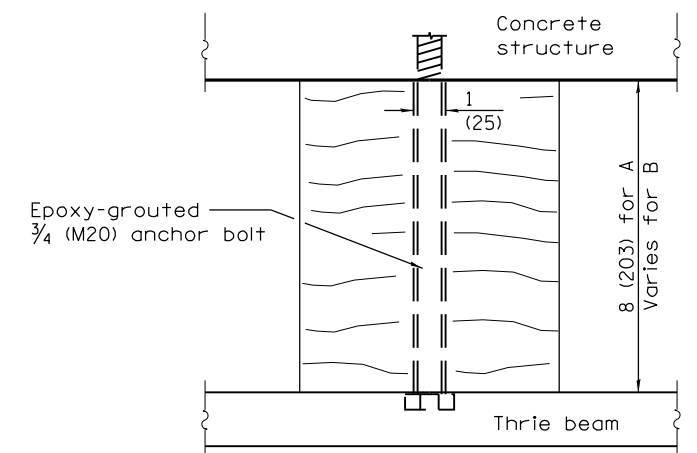
**MODIFIED THICKNESS DETAIL
WOOD BLOCKOUTS A, B, C, & D**



WOOD BLOCKOUT D



WOOD BLOCKOUT C



WOOD BLOCKOUT A & B